

Sample Name: **9lb Hammer**
 Tested for: **Western Oregon Botanicals**
Compliance - Usable

Laboratory ID: 18H0039-06

Matrix: Useable Marijuana

Sample Metrc ID: 1A40103000098BF000001211

Strain: 9lb Hammer

Lot # 9lb 6/27

Date Sampled: 08/15/18 00:00

Batch RFID: 1A40103000098BF000001199

Date Accepted: 08/15/18

Batch Size: 1362 (g)

Results Valid Until: 08/15/19



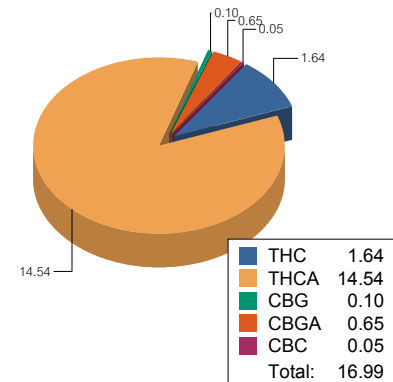
Potency Analysis

Date Extracted: 08/20/18

Analysis Method/SOP: Potency

Date Analyzed: 08/20/18

* - ORELAP certified analyte

Cannabinoids	% weight	mg/g	Cannabinoids Profile												
Total THC ((THCA*0.877)+d9)	14.39	143.9	 <table border="1"> <tr><td>THC</td><td>1.64</td></tr> <tr><td>THCA</td><td>14.54</td></tr> <tr><td>CBG</td><td>0.10</td></tr> <tr><td>CBGA</td><td>0.65</td></tr> <tr><td>CBC</td><td>0.05</td></tr> <tr><td>Total</td><td>16.99</td></tr> </table>	THC	1.64	THCA	14.54	CBG	0.10	CBGA	0.65	CBC	0.05	Total	16.99
THC	1.64														
THCA	14.54														
CBG	0.10														
CBGA	0.65														
CBC	0.05														
Total	16.99														
Total CBD ((CBDA*0.877)+CBD)	< LOQ	< LOQ													
d9-THC (d9-Tetrahydrocannabinol)*	1.64	16.4													
d8-THC (d8-Tetrahydrocannabinol)*	< LOQ	< LOQ													
THCA (d9-Tetrahydrocannabinolic Acid)*	14.54	145.4													
CBD (Cannabidiol)*	< LOQ	< LOQ													
CBDA (Cannabidiolic Acid)*	< LOQ	< LOQ													
CBN (Cannabinol)*	< LOQ	< LOQ													
CBG (Cannabigerol)*	0.10	1													
CBGA (Cannabigerolic Acid)	0.65	6.5													
CBDV (Cannabidivarin)*	< LOQ	< LOQ													
CBDVA (Cannabidivarinic Acid)	< LOQ	< LOQ													
CBC (Cannabichromene)*	0.05	0.5													
THCV (Tetrahydrocannabivarin)	< LOQ	< LOQ													
Total Cannabinoids	16.99	169.9													

Water Activity and Moisture

Analyte	Result	Limit	Units	LOQ	Analyzed	Method
Water Activity	0.487	0.65	AW	0.0300	08/17/2018	Water Activity
Percent Moisture	11.7	15	%	0.10	08/17/2018	Moisture

Cannabinoids reported as dry weight (moisture corrected)

Results above the action level are highlighted in red #.

<LOQ - Results below the Limit of Quantitation - Compound not detected



Brian Weigel
Lab Director

These results relate only to the sample included on this report. The report may not be reproduced except in full, without the written permission of SC Laboratories. Samples tested in accordance with Oregon Administrative Rules, TNI 2009 Standard and SC Laboratories quality assurance plan unless otherwise noted.

Sample Name: 91b Hammer	Date Sampled: 08/15/18 00:00
Tested for: Western Oregon Botanicals Compliance - Usable	Date Accepted: 08/15/18
Laboratory ID: 18H0039-06 Strain: 91b Hammer	Results Valid Until: 08/15/19
Matrix: Useable Marijuana	Sample Metrc ID: 1A40103000098BF000001211
Lot # 91b 6/27	Batch RFID: 1A40103000098BF000001199
	Batch Size: 1362 (g)

Terpene Analysis

Date Extracted: 08/20/18 Analysis Method/SOP: Potency
 Date Analyzed: 08/20/18

Analyte	Result (%)	LOQ	Analyte	Result	LOQ
alpha Pinene	0.086	0.018	Myrcene	0.349	0.018
alpha Phellandrene	< LOQ	0.018	3-Carene	< LOQ	0.018
alpha Terpinene	< LOQ	0.018	Limonene	0.050	0.018
Terpinolene	< LOQ	0.018	Linalool	0.047	0.018
Fenchol	< LOQ	0.018	Borneol	< LOQ	0.018
Terpineol	< LOQ	0.018	Geraniol	0.041	0.018
alpha Humulene	0.018	0.018	beta Caryophyllene	0.072	0.018
Caryophyllene Oxide	0.019	0.018	alpha Bisabolol	< LOQ	0.018
Camphene	< LOQ	0.018	beta Pinene	0.034	0.018
Ocimene	0.052	0.018	Sabinene	< LOQ	0.018
Camphor	< LOQ	0.018	Isoborneol	< LOQ	0.018
Menthol	< LOQ	0.018	alpha Cedrene	< LOQ	0.018
Nerolidol	< LOQ	0.018	R-(+)-Pulegone	< LOQ	0.018
Eucalyptol	< LOQ	0.018	p-Cymene	< LOQ	0.018
(-)-Isopulegol	< LOQ	0.018	Geranyl Acetate	< LOQ	0.018
Guaiol	0.041	0.018	Valencene	0.022	0.018
Phytol	0.111	0.018	Citronellol	< LOQ	0.018
gamma-Terpinene	< LOQ	0.018			
Total Terpenes				0.925 %	

<LOQ - Results below the Limit of Quantitation - Compound not detected
 Terpene Analysis is not ORELAP Accredited.

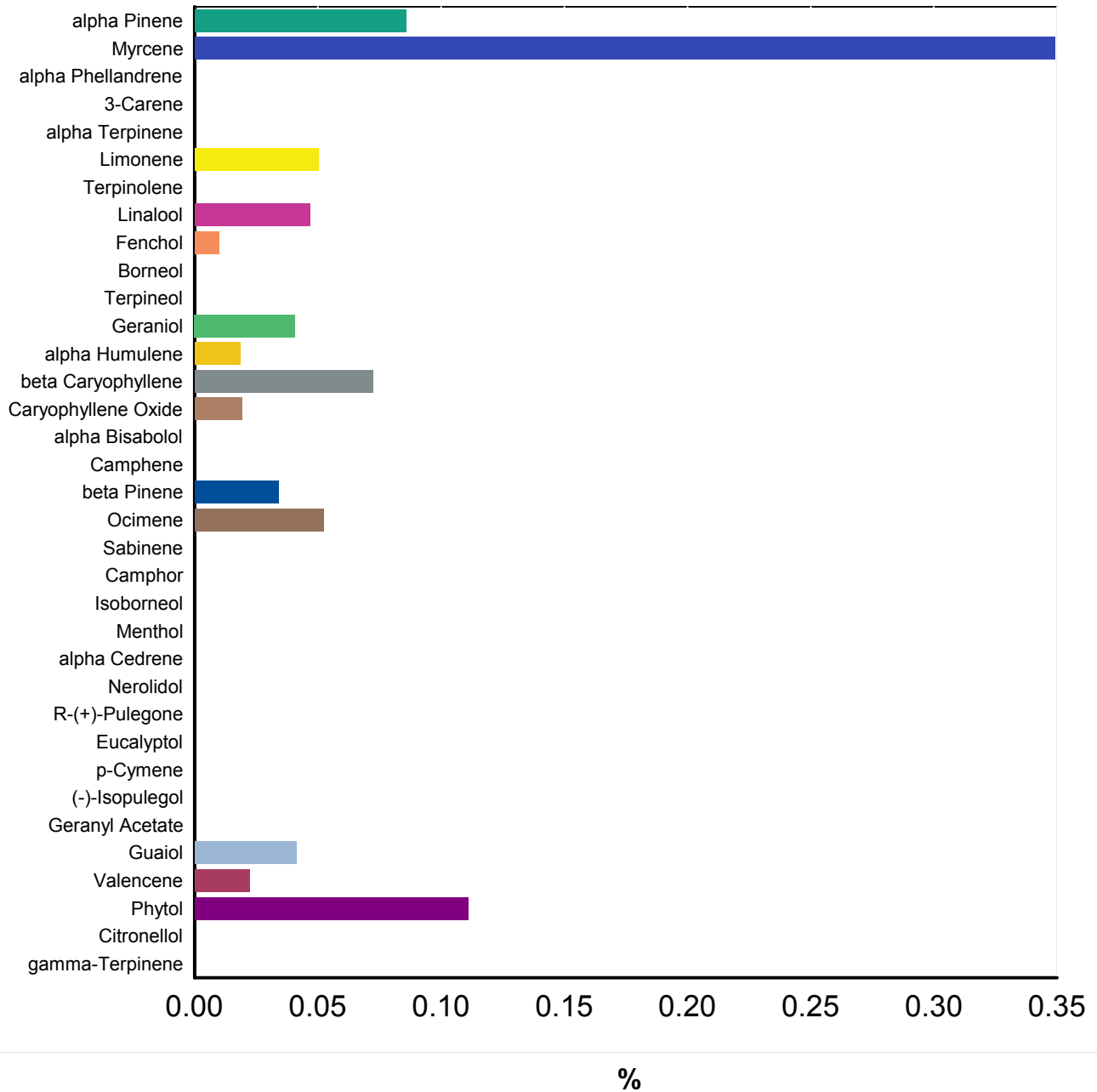


Brian Weigel
 Lab Director

These results relate only to the sample included on this report. The report may not be reproduced except in full, without the written permission of SC Laboratories. Samples tested in accordance with Oregon Administrative Rules, TNI 2009 Standard and SC Laboratories quality assurance plan unless otherwise noted.

Sample Name: 91b Hammer	Date Sampled: 08/15/18 00:00
Tested for: Western Oregon Botanicals	Date Accepted: 08/15/18 13:13
Compliance - Usable	Results Valid Until: 08/15/19
Laboratory ID: 18H0039-06	Matrix: Useable Marijuana
Client/Metric ID: 1A40103000098BF000001211	

Terpene Profile



Brian Weigel
 Brian Weigel
 Lab Director

These results relate only to the sample included on this report. The report may not be reproduced except in full, without the written permission of SC Laboratories. Samples tested in accordance with Oregon Administrative Rules, TNI 2009 Standard and SC Laboratories quality assurance plan unless otherwise noted.

Sample Name: **9lb Hammer** Date Sampled: **08/15/18 00:00**
 Tested for: **Western Oregon Botanicals** Date Accepted: **08/15/18**
Compliance - Usable Results Valid Until: **08/15/19**

Laboratory ID: **18H0039-06** Strain: **9lb Hammer** Sample Metrc ID: **1A40103000098BF000001211**
 Matrix: **Useable Marijuana** Batch RFID: **1A40103000098BF000001199**
 Lot # **9lb 6/27** Batch Size: **1362 (g)**

Pesticide Analysis in ppm

Date Extracted: 08/17/18 Analysis Method/SOP: Pesticides
 Date Analyzed: 08/18/18 Results above the action levels are highlighted in red #.

Analyte	Result	Action Level	LOQ	Analyte	Result	Action Level	LOQ
Abamectin	< LOQ	0.5	0.24	Acephate	< LOQ	0.4	0.19
Acequinocyl	< LOQ	2	0.97	Acetamiprid	< LOQ	0.2	0.10
Aldicarb	< LOQ	0.4	0.19	Azoxystrobin	< LOQ	0.2	0.10
Bifenazate	< LOQ	0.2	0.10	Bifenthrin	< LOQ	0.2	0.10
Boscalid	< LOQ	0.4	0.19	Carbaryl	< LOQ	0.2	0.10
Carbofuran	< LOQ	0.2	0.10	Chlorantraniliprole	< LOQ	0.2	0.10
Chlorfenapyr	< LOQ	1	0.49	Chlorpyrifos	< LOQ	0.2	0.10
Clofentezine	< LOQ	0.2	0.10	Cyfluthrin	< LOQ	1	0.49
Cypermethrin	< LOQ	1	0.49	Daminozide	< LOQ	1	0.49
DDVP (Dichlorvos)	< LOQ	1	0.49	Diazinon	< LOQ	0.2	0.10
Dimethoate	< LOQ	0.2	0.10	Ethoprophos	< LOQ	0.2	0.10
Etofenprox	< LOQ	0.4	0.19	Etoxazole	< LOQ	0.2	0.10
Fenoxycarb	< LOQ	0.2	0.10	Fenpyroximate	< LOQ	0.4	0.19
Fipronil	< LOQ	0.4	0.19	Fonicamid	< LOQ	1	0.49
Fludioxonil	< LOQ	0.4	0.19	Hexythiazox	< LOQ	1	0.49
Imazalil	< LOQ	0.2	0.10	Imidacloprid	< LOQ	0.4	0.19
Kresoxim-methyl	< LOQ	0.4	0.19	Malathion	< LOQ	0.2	0.10
Metalaxyl	< LOQ	0.2	0.10	Methiocarb	< LOQ	0.2	0.10
Methomyl	< LOQ	0.4	0.19	Methyl parathion	< LOQ	0.2	0.10
MGK-264	< LOQ	0.2	0.10	Myclobutanil	< LOQ	0.2	0.10
Naled	< LOQ	0.5	0.24	Oxamyl	< LOQ	1	0.49
Paclobutrazol	< LOQ	0.4	0.19	Permethrins (total)	< LOQ	0.2	0.10
Phosmet	< LOQ	0.2	0.10	Piperonyl butoxide	< LOQ	2	0.49
Prallethrin	< LOQ	0.2	0.10	Propiconazole	< LOQ	0.4	0.19
Propoxur	< LOQ	0.2	0.10	Pyrethrins (total)	< LOQ	1	0.49
Pyridaben	< LOQ	0.2	0.10	Spinosad	< LOQ	0.2	0.10
Spiromesifen	< LOQ	0.2	0.10	Spirotetramat	< LOQ	0.2	0.10
Spiroxamine	< LOQ	0.4	0.19	Tebuconazole	< LOQ	0.4	0.19
Thiacloprid	< LOQ	0.2	0.10	Thiamethoxam	< LOQ	0.2	0.10
Trifloxystrobin	< LOQ	0.2	0.10				

<LOQ - Results below the Limit of Quantitation - Compound not detected



Brian Weigel
Lab Director

These results relate only to the sample included on this report. The report may not be reproduced except in full, without the written permission of SC Laboratories. Samples tested in accordance with Oregon Administrative Rules, TNI 2009 Standard and SC Laboratories quality assurance plan unless otherwise noted.

Case Narrative

Terpenes - Phytol and Geraniol exceeded normally accepted RPD criteria in the Sample Duplicate due to relatively large variations in very small values;

**Quality Control
Potency**

Batch: B180684 - Potency/Terpenes

Blank(B180684-BLK1)		Extracted - 08/20/18 9:30 Analyzed - 08/20/18 15:09						
Analyte	Result	Units	Spike Level	Source Result	%REC	%REC Limits	RPD	RPD Limit
d9-THC (d9-Tetrahydrocannabinol)	< LOQ	%						
d8-THC (d8-Tetrahydrocannabinol)	< LOQ	%						
THCA (d9-Tetrahydrocannabinolic Acid)	< LOQ	%						
CBD (Cannabidiol)	< LOQ	%						
CBDA (Cannabidiolic Acid)	< LOQ	%						
CBN (Cannabinol)	< LOQ	%						
CBG (Cannabigerol)	< LOQ	%						
CBGA (Cannabigerolic Acid)	< LOQ	%						
CBDV (Cannabidivarin)	< LOQ	%						
CBDVA (Cannabidivarinic Acid)	< LOQ	%						
CBC (Cannabichromene)	< LOQ	%						
THCV (Tetrahydrocannabivarin)	< LOQ	%						

Duplicate(B180684-DUP1)		Extracted - 08/20/18 9:30 Analyzed - 08/20/18 15:01						
Analyte	Result	Units	Spike Level	Source Result	%REC	%REC Limits	RPD	RPD Limit
d9-THC (d9-Tetrahydrocannabinol)	1.80	%		1.92			6.38	20
d8-THC (d8-Tetrahydrocannabinol)	< LOQ	%		< LOQ				20
THCA (d9-Tetrahydrocannabinolic Acid)	18.66	%		20.33			8.53	20
CBD (Cannabidiol)	< LOQ	%		< LOQ				20
CBDA (Cannabidiolic Acid)	0.03	%		0.03			6.74	20
CBN (Cannabinol)	< LOQ	%		< LOQ				20
CBG (Cannabigerol)	0.07	%		0.08			10.6	20
CBGA (Cannabigerolic Acid)	1.21	%		1.31			7.76	20
CBDV (Cannabidivarin)	< LOQ	%		< LOQ				20
CBDVA (Cannabidivarinic Acid)	< LOQ	%		< LOQ				20
CBC (Cannabichromene)	< LOQ	%		< LOQ				20
THCV (Tetrahydrocannabivarin)	< LOQ	%		< LOQ				20



Brian Weigel
Lab Director

These results relate only to the sample included on this report. The report may not be reproduced except in full, without the written permission of SC Laboratories. Samples tested in accordance with Oregon Administrative Rules, TNI 2009 Standard and SC Laboratories quality assurance plan unless otherwise noted.

Quality Control Potency (Continued)

Batch: B180684 - Potency/Terpenes (Continued)

LCS(B180684-BS1)		Extracted - 08/20/18 9:30 Analyzed - 08/20/18 14:52						
Analyte	Result	Units	Spike Level	Source Result	%REC	%REC Limits	RPD	RPD Limit
d9-THC (d9-Tetrahydrocannabinol)	0.04	%	0.0400		98.8	80-120		
THCA (d9-Tetrahydrocannabinolic Acid)	0.04	%	0.0400		97.7	80-120		
CBD (Cannabidiol)	0.04	%	0.0400		97.4	80-120		
CBN (Cannabinol)	0.04	%	0.0400		91.5	80-120		



Brian Weigel
Lab Director

These results relate only to the sample included on this report. The report may not be reproduced except in full, without the written permission of SC Laboratories. Samples tested in accordance with Oregon Administrative Rules, TNI 2009 Standard and SC Laboratories quality assurance plan unless otherwise noted.

Quality Control Pesticide Analysis

Batch: B180685 - Pesticide Prep

Blank(B180685-BLK1)		Extracted - 08/17/18 12:02 Analyzed - 08/17/18 23:06						
Analyte	Result	Units	Spike Level	Source Result	%REC	%REC Limits	RPD	RPD Limit
Abamectin	< LOQ	ppm						
Acephate	< LOQ	ppm						
Acequinocyl	< LOQ	ppm						
Acetamiprid	< LOQ	ppm						
Aldicarb	< LOQ	ppm						
Azoxystrobin	< LOQ	ppm						
Bifenazate	< LOQ	ppm						
Bifenthrin	< LOQ	ppm						
Boscalid	< LOQ	ppm						
Carbaryl	< LOQ	ppm						
Carbofuran	< LOQ	ppm						
Chlorantraniliprole	< LOQ	ppm						
Chlorfenapyr	< LOQ	ppm						
Chlorpyrifos	< LOQ	ppm						
Clofentezine	< LOQ	ppm						
Cyfluthrin	< LOQ	ppm						
Cypermethrin	< LOQ	ppm						
Daminozide	< LOQ	ppm						
DDVP (Dichlorvos)	< LOQ	ppm						
Diazinon	< LOQ	ppm						
Dimethoate	< LOQ	ppm						
Ethoprophos	< LOQ	ppm						
Etofenprox	< LOQ	ppm						
Etoxazole	< LOQ	ppm						
Fenoxycarb	< LOQ	ppm						
Fenpyroximate	< LOQ	ppm						
Fipronil	< LOQ	ppm						
Fonicamid	< LOQ	ppm						
Fludioxonil	< LOQ	ppm						
Hexythiazox	< LOQ	ppm						
Imazalil	< LOQ	ppm						
Imidacloprid	< LOQ	ppm						
Kresoxim-methyl	< LOQ	ppm						
Malathion	< LOQ	ppm						
Metalaxyl	< LOQ	ppm						



Brian Weigel
Lab Director

These results relate only to the sample included on this report. The report may not be reproduced except in full, without the written permission of SC Laboratories. Samples tested in accordance with Oregon Administrative Rules, TNI 2009 Standard and SC Laboratories quality assurance plan unless otherwise noted.

Quality Control

Pesticide Analysis (Continued)

Batch: B180685 - Pesticide Prep (Continued)

Blank(B180685-BLK1)			Extracted - 08/17/18 12:02 Analyzed - 08/17/18 23:06					
Analyte	Result	Units	Spike Level	Source Result	%REC	%REC Limits	RPD	RPD Limit
Methiocarb	< LOQ	ppm						
Methomyl	< LOQ	ppm						
Methyl parathion	< LOQ	ppm						
MGK-264	< LOQ	ppm						
Myclobutanil	< LOQ	ppm						
Naled	< LOQ	ppm						
Oxamyl	< LOQ	ppm						
Paclbutrazol	< LOQ	ppm						
Permethrins (total)	< LOQ	ppm						
Phosmet	< LOQ	ppm						
Piperonyl butoxide	< LOQ	ppm						
Prallethrin	< LOQ	ppm						
Propiconazole	< LOQ	ppm						
Propoxur	< LOQ	ppm						
Pyrethrins (total)	< LOQ	ppm						
Pyridaben	< LOQ	ppm						
Spinosad	< LOQ	ppm						
Spiromesifen	< LOQ	ppm						
Spirotetramat	< LOQ	ppm						
Spiroxamine	< LOQ	ppm						
Tebuconazole	< LOQ	ppm						
Thiacloprid	< LOQ	ppm						
Thiamethoxam	< LOQ	ppm						
Trifloxystrobin	< LOQ	ppm						

LCS(B180685-BS1)			Extracted - 08/17/18 12:02 Analyzed - 08/17/18 23:22					
Analyte	Result	Units	Spike Level	Source Result	%REC	%REC Limits	RPD	RPD Limit
Acephate	1.03	ppm	1.00		103	70-130		
Acetamiprid	0.89	ppm	1.00		88.9	70-130		
Aldicarb	0.82	ppm	1.00		82.0	70-130		
Bifenazate	1.13	ppm	1.00		113	70-130		
Boscalid	1.20	ppm	1.00		120	70-130		
Chlorantraniliprole	0.88	ppm	1.00		87.5	70-130		
Chlorpyrifos	1.04	ppm	1.00		104	70-130		
Cyfluthrin	1.15	ppm	1.00		115	70-130		



Brian Weigel
Lab Director

These results relate only to the sample included on this report. The report may not be reproduced except in full, without the written permission of SC Laboratories. Samples tested in accordance with Oregon Administrative Rules, TNI 2009 Standard and SC Laboratories quality assurance plan unless otherwise noted.

Quality Control Pesticide Analysis (Continued)

Batch: B180685 - Pesticide Prep (Continued)

LCS(B180685-BS1)		Extracted - 08/17/18 12:02 Analyzed - 08/17/18 23:22						
Analyte	Result	Units	Spike Level	Source Result	%REC	%REC Limits	RPD	RPD Limit
DDVP (Dichlorvos)	0.94	ppm	1.00		94.3	70-130		
Ethoprophos	1.01	ppm	1.00		101	70-130		
Etoxazole	0.97	ppm	1.00		97.0	70-130		
Fenoxycarb	1.04	ppm	1.00		104	70-130		
Flonicamid	1.17	ppm	1.00		117	70-130		
Imazalil	1.02	ppm	1.00		102	70-130		
Imidacloprid	1.18	ppm	1.00		118	70-130		
Methiocarb	1.23	ppm	1.00		123	70-130		
Myclobutanil	1.10	ppm	1.00		110	70-130		
Oxamyl	1.07	ppm	1.00		107	70-130		
Paclobutrazol	1.27	ppm	1.00		127	70-130		
Piperonyl butoxide	1.00	ppm	1.00		99.7	70-130		
Prallethrin	0.95	ppm	1.00		95.0	70-130		
Propoxur	0.93	ppm	1.00		93.3	70-130		
Spiromesifen	1.03	ppm	1.00		103	70-130		
Spiroxamine	0.43	ppm	0.550		78.2	70-130		
Thiacloprid	0.91	ppm	1.00		91.2	70-130		
Thiamethoxam	1.27	ppm	1.00		127	70-130		
Trifloxystrobin	1.06	ppm	1.00		106	70-130		

Matrix Spike(B180685-MS1)		Extracted - 08/17/18 12:02 Analyzed - 08/17/18 23:38						
Analyte	Result	Units	Spike Level	Source Result	%REC	%REC Limits	RPD	RPD Limit
Acephate	1.65	ppm	1.98	< LOQ	83.6	70-130		
Acetamiprid	1.77	ppm	1.98	< LOQ	89.6	70-130		
Aldicarb	1.73	ppm	1.98	< LOQ	87.7	70-130		
Bifenazate	1.62	ppm	1.98	< LOQ	82.1	70-130		
Boscalid	1.79	ppm	1.98	< LOQ	90.4	70-130		
Chlorantraniliprole	1.60	ppm	1.98	< LOQ	81.0	70-130		
Chlorpyrifos	1.53	ppm	1.98	< LOQ	77.3	70-130		
Cyfluthrin	1.88	ppm	1.98	< LOQ	95.1	70-130		
DDVP (Dichlorvos)	1.73	ppm	1.98	< LOQ	87.5	70-130		
Ethoprophos	1.45	ppm	1.98	< LOQ	73.2	70-130		
Etoxazole	1.61	ppm	1.98	< LOQ	81.3	70-130		
Fenoxycarb	1.44	ppm	1.98	< LOQ	72.7	70-130		
Flonicamid	1.86	ppm	1.98	< LOQ	94.2	70-130		



Brian Weigel
Lab Director

These results relate only to the sample included on this report. The report may not be reproduced except in full, without the written permission of SC Laboratories. Samples tested in accordance with Oregon Administrative Rules, TNI 2009 Standard and SC Laboratories quality assurance plan unless otherwise noted.

Quality Control

Pesticide Analysis (Continued)

Batch: B180685 - Pesticide Prep (Continued)

Matrix Spike(B180685-MS1)			Extracted - 08/17/18 12:02 Analyzed - 08/17/18 23:38					
Analyte	Result	Units	Spike Level	Source Result	%REC	%REC Limits	RPD	RPD Limit
Imazalil	1.93	ppm	1.98	< LOQ	97.8	70-130		
Imidacloprid	1.91	ppm	1.98	< LOQ	96.9	70-130		
Methiocarb	1.81	ppm	1.98	< LOQ	91.5	70-130		
Myclobutanil	1.58	ppm	1.98	< LOQ	80.1	70-130		
Oxamyl	1.68	ppm	1.98	< LOQ	85.1	70-130		
Paclobutrazol	1.77	ppm	1.98	< LOQ	89.8	70-130		
Piperonyl butoxide	1.52	ppm	1.98	< LOQ	77.2	70-130		
Prallethrin	1.44	ppm	1.98	< LOQ	73.0	70-130		
Propoxur	1.76	ppm	1.98	< LOQ	89.0	70-130		
Spiromesifen	1.13	ppm	1.98	< LOQ	57.3	70-130		
Spiroxamine	0.73	ppm	1.09	< LOQ	67.3	70-130		
Thiacloprid	1.74	ppm	1.98	< LOQ	88.3	70-130		
Thiamethoxam	1.98	ppm	1.98	< LOQ	100	70-130		
Trifloxystrobin	1.78	ppm	1.98	< LOQ	89.9	70-130		

Matrix Spike Dup(B180685-MSD1)			Extracted - 08/17/18 12:02 Analyzed - 08/17/18					
Analyte	Result	Units	Spike Level	Source Result	%REC	%REC Limits	RPD	RPD Limit
Acephate	1.69	ppm	1.98	< LOQ	85.5	70-130	2.27	30
Acetamiprid	1.75	ppm	1.98	< LOQ	88.4	70-130	1.33	30
Aldicarb	1.70	ppm	1.98	< LOQ	85.9	70-130	2.12	30
Bifenazate	1.42	ppm	1.98	< LOQ	71.9	70-130	13.3	30
Boscalid	1.64	ppm	1.98	< LOQ	82.8	70-130	8.75	30
Chlorantraniliprole	1.67	ppm	1.98	< LOQ	84.6	70-130	4.29	30
Chlorpyrifos	1.50	ppm	1.98	< LOQ	75.7	70-130	2.09	30
Cyfluthrin	1.81	ppm	1.98	< LOQ	91.6	70-130	3.74	30
DDVP (Dichlorvos)	1.76	ppm	1.98	< LOQ	88.8	70-130	1.41	30
Ethoprophos	1.28	ppm	1.98	< LOQ	64.8	70-130	12.1	30
Etoxazole	1.57	ppm	1.98	< LOQ	79.2	70-130	2.65	30
Fenoxycarb	1.37	ppm	1.98	< LOQ	69.1	70-130	5.03	30
Flonicamid	1.87	ppm	1.98	< LOQ	94.5	70-130	0.315	30
Imazalil	1.94	ppm	1.98	< LOQ	97.9	70-130	0.0650	30
Imidacloprid	1.87	ppm	1.98	< LOQ	94.3	70-130	2.69	30
Methiocarb	1.61	ppm	1.98	< LOQ	81.4	70-130	11.7	30
Myclobutanil	1.37	ppm	1.98	< LOQ	69.4	70-130	14.3	30
Oxamyl	1.70	ppm	1.98	< LOQ	85.8	70-130	0.867	30



Brian Weigel
Lab Director

These results relate only to the sample included on this report. The report may not be reproduced except in full, without the written permission of SC Laboratories. Samples tested in accordance with Oregon Administrative Rules, TNI 2009 Standard and SC Laboratories quality assurance plan unless otherwise noted.

Quality Control Pesticide Analysis (Continued)

Batch: B180685 - Pesticide Prep (Continued)

Matrix Spike Dup(B180685-MSD1)			Extracted - 08/17/18 12:02 Analyzed - 08/17/18					
Analyte	Result	Units	Spike Level	Source Result	%REC	%REC Limits	RPD	RPD Limit
Paclobutrazol	1.63	ppm	1.98	< LOQ	82.2	70-130	8.84	30
Piperonyl butoxide	1.53	ppm	1.98	< LOQ	77.4	70-130	0.243	30
Prallethrin	1.43	ppm	1.98	< LOQ	72.1	70-130	1.19	30
Propoxur	1.79	ppm	1.98	< LOQ	90.3	70-130	1.46	30
Spiromesifen	1.13	ppm	1.98	< LOQ	57.3	70-130	0.0144	30
Spiroxamine	0.71	ppm	1.09	< LOQ	64.8	70-130	3.72	30
Thiacloprid	1.74	ppm	1.98	< LOQ	88.1	70-130	0.246	30
Thiamethoxam	1.99	ppm	1.98	< LOQ	101	70-130	0.506	30
Trifloxystrobin	1.74	ppm	1.98	< LOQ	88.2	70-130	1.94	30



Brian Weigel
Lab Director

These results relate only to the sample included on this report. The report may not be reproduced except in full, without the written permission of SC Laboratories. Samples tested in accordance with Oregon Administrative Rules, TNI 2009 Standard and SC Laboratories quality assurance plan unless otherwise noted.

Quality Control Water Activity

Batch: B180686 - Water Activity

Duplicate(B180686-DUP1)			Extracted - 08/17/18 12:01		Analyzed - 08/17/18 12:01			
Analyte	Result	Units	Spike Level	Source Result	%REC	%REC Limits	RPD	RPD Limit
Water Activity	0.509	AW		0.518			1.67	20

Batch: B180687 - Gravimetric

Duplicate(B180687-DUP1)			Extracted - 08/17/18 12:03		Analyzed - 08/17/18 12:03			
Analyte	Result	Units	Spike Level	Source Result	%REC	%REC Limits	RPD	RPD Limit
Percent Moisture	11.4	%		11.5			1.24	20

Batch: B180688 - Potency/Terpenes

Blank(B180688-BLK1)			Extracted - 08/20/18 11:25		Analyzed - 08/20/18 16:48			
Analyte	Result	Units	Spike Level	Source Result	%REC	%REC Limits	RPD	RPD Limit
alpha Pinene	< LOQ	%						
Myrcene	< LOQ	%						
alpha Phellandrene	< LOQ	%						
3-Carene	< LOQ	%						
alpha Terpinene	< LOQ	%						
Limonene	< LOQ	%						
Terpinolene	< LOQ	%						
Linalool	< LOQ	%						
Fenchol	< LOQ	%						
Borneol	< LOQ	%						
Terpineol	< LOQ	%						
Geraniol	< LOQ	%						
alpha Humulene	< LOQ	%						
beta Caryophyllene	< LOQ	%						
Caryophyllene Oxide	< LOQ	%						
alpha Bisabolol	< LOQ	%						
Camphene	< LOQ	%						
beta Pinene	< LOQ	%						
Ocimene	< LOQ	%						
Sabinene	< LOQ	%						
Camphor	< LOQ	%						
Isoborneol	< LOQ	%						
Menthol	< LOQ	%						
alpha Cedrene	< LOQ	%						



Brian Weigel
Lab Director

These results relate only to the sample included on this report. The report may not be reproduced except in full, without the written permission of SC Laboratories. Samples tested in accordance with Oregon Administrative Rules, TNI 2009 Standard and SC Laboratories quality assurance plan unless otherwise noted.

Quality Control

Terpene Analysis (Continued)

Batch: B180688 - Potency/Terpenes (Continued)

Blank(B180688-BLK1)			Extracted - 08/20/18 11:25 Analyzed - 08/20/18 16:48					
Analyte	Result	Units	Spike Level	Source Result	%REC	%REC Limits	RPD	RPD Limit
Nerolidol	< LOQ	%						
R-(+)-Pulegone	< LOQ	%						
Eucalyptol	< LOQ	%						
p-Cymene	< LOQ	%						
(-)-Isopulegol	< LOQ	%						
Geranyl Acetate	< LOQ	%						
Guaiol	< LOQ	%						
Valencene	< LOQ	%						
Phytol	0.258	%						
Citronellol	< LOQ	%						
gamma-Terpinene	< LOQ	%						

Duplicate(B180688-DUP1)			Extracted - 08/20/18 11:25 Analyzed - 08/20/18 16:48					
Analyte	Result	Units	Spike Level	Source Result	%REC	%REC Limits	RPD	RPD Limit
alpha Ocimene	< LOQ	%		< LOQ				20
alpha Terpineol	< LOQ	%		< LOQ				20
beta Ocimene	0.041	%		0.040			2.89	20
beta Terpineol	< LOQ	%		< LOQ				20
cis-Nerolidol	< LOQ	%		< LOQ				20
Phytol 1	0.061	%		0.050			19.1	20
Phytol 2	< LOQ	%		0.122			148	20
trans-Nerolidol	0.031	%		0.035			11.4	20
alpha Pinene	0.139	%		0.144			3.58	20
Myrcene	0.341	%		0.355			3.78	20
alpha Phellandrene	< LOQ	%		< LOQ				20
3-Carene	< LOQ	%		< LOQ				20
alpha Terpinene	< LOQ	%		< LOQ				20
Limonene	0.052	%		0.052			1.44	20
Terpinolene	0.113	%		0.107			5.76	20
Linalool	0.056	%		0.058			3.84	20
Fenchol	< LOQ	%		< LOQ				20
Borneol	< LOQ	%		< LOQ				20
Terpineol	< LOQ	%		< LOQ				20
Geraniol	0.047	%		0.034			32.7	20
alpha Humulene	0.045	%		0.046			1.82	20



Brian Weigel
Lab Director

These results relate only to the sample included on this report. The report may not be reproduced except in full, without the written permission of SC Laboratories. Samples tested in accordance with Oregon Administrative Rules, TNI 2009 Standard and SC Laboratories quality assurance plan unless otherwise noted.

Quality Control

Terpene Analysis (Continued)

Batch: B180688 - Potency/Terpenes (Continued)

Duplicate(B180688-DUP1)		Extracted - 08/20/18 11:25 Analyzed - 08/20/18 16:48						
Analyte	Result	Units	Spike Level	Source Result	%REC	%REC Limits	RPD	RPD Limit
beta Caryophyllene	0.148	%		0.153			3.27	20
Caryophyllene Oxide	< LOQ	%		< LOQ				20
alpha Bisabolol	0.028	%		0.024			12.6	20
Camphene	< LOQ	%		< LOQ				20
beta Pinene	0.074	%		0.076			3.17	20
Ocimene	0.041	%		0.040			2.89	20
Sabinene	< LOQ	%		< LOQ				20
Camphor	< LOQ	%		< LOQ				20
Isoborneol	< LOQ	%		< LOQ				20
Menthol	< LOQ	%		< LOQ				20
alpha Cedrene	< LOQ	%		< LOQ				20
Nerolidol	0.031	%		0.035			11.4	20
R-(+)-Pulegone	< LOQ	%		< LOQ				20
Eucalyptol	< LOQ	%		< LOQ				20
p-Cymene	< LOQ	%		< LOQ				20
(-)-Isopulegol	< LOQ	%		< LOQ				20
Geranyl Acetate	< LOQ	%		< LOQ				20
Guaiol	0.053	%		0.056			5.35	20
Valencene	0.068	%		0.071			3.56	20
Phytol	0.079	%		0.172			73.8	20
Citronellol	< LOQ	%		< LOQ				20
gamma-Terpinene	< LOQ	%		< LOQ				20



Brian Weigel
Lab Director

These results relate only to the sample included on this report. The report may not be reproduced except in full, without the written permission of SC Laboratories. Samples tested in accordance with Oregon Administrative Rules, TNI 2009 Standard and SC Laboratories quality assurance plan unless otherwise noted.



**OREGON LIQUOR CONTROL COMMISSION
CANNABIS TRANSPORTATION MANIFEST**



18H0039

All sales transactions are to be completed prior to transportation of any CANNABIS. The receiving entity may reject product delivered, but amount delivered must be limited to amount agreed upon in prior sales transaction.

Manifest #:	0000908866	Date Created:	8/15/2018 11:44 AM
Originating Entity:	Western Oregon Botanicals		For OLCC Use Only
Originating License Number:	020-10021071D94		
Address of Originating Entity:	18270 SW Belton Road Sherwood, OR 97140		
Phone No. of Originating Entity:	971-325-4690		
Contact Phone No. for Inquiries:	971-325-4690		
Destination # 1:	SC Laboratories	Destination Phone No.:	707-339-0050
Destination License Number:	010-1004748743D	Date and Approximate Time of Departure:	8/15/2018 11:37 AM
Address of Destination:	15865 SW 74th Avenue Ste 110 Tigard, OR 97224	Date and Approximate Time of Arrival:	8/15/2018 6:01 PM
		Date/Time Received:	8-15-18 1:13
		Notes: details for extenuating circumstances (e.g., road closure, flat tire, etc.)	
Route to be Traveled:	hw 99 east		
Name of Person Transporting:	Scott Forster	Handler Permit No. of Driver:	n/a
State Driver's License No.:	A625521	Signature of Person Transporting:	<i>S.F.</i>
Make, Model, License Plate No.:	Nissan NV 200 825kat		
Package Label	Harvest Name	Item Name	Weight/Quantity
1A40103000098BF000001206 Status: Shipped	9lb 8/10	9lb Hammer (Buds (by strain))	Shp: 35.0600 g
1A40103000098BF000001207 Status: Shipped	WQ8/10	Waikiki Queen (Buds (by strain))	Shp: 12.8800 g
1A40103000098BF000001208 Status: Shipped	GC 8/10	Green Crack (Buds (by strain))	Shp: 24.4900 g
1A40103000098BF000001209 Status: Shipped	golden pineapple 6/27	Golden Pineapple (Buds (by strain))	Shp: 12.1500 g
1A40103000098BF000001210 Status: Shipped	maui 6/27	Maui Wowie (Buds (by strain))	Shp: 12.8000 g
1A40103000098BF000001211 Status: Shipped	9lb hammer	9lb Hammer (Buds (by strain))	Shp: 7.0800 g
1A40103000098BF000001212 Status: Shipped	GR 6/27	Gorilla Renegade (Buds (by strain))	Shp: 7.0500 g
PRODUCT REJECTION (if only a portion of shipment is rejected, circle that portion above)			
Name of Person Receiving or Rejecting Product:	Angelica Serr		
I confirm that the contents of this shipment match weight records entered above, and I agree to take custody of those portions of this shipment not circled above. Those portions circled were returned to the individual delivering this shipment.			
Signature:	<i>Angelica</i>	Date:	8-15-18
Signature of individual taking receipt of rejected portion of this shipment:			

Client: Western Oregon Botanicals Client License: 02010021071d94 Date: 8/15/2015 Thermometer ID: T014
 Location: 18270 SW Benton Rd Sherwood OR Requestor: Abdullah Naimi Event ID: 18H0039 Balance ID: SAMP_BAL_02
 Sampling SOP: SC-OR-SAMP-003 Sampler: Scott Forster Transporter: Scott Forster Hygrometer ID: Anemometer_02

Lab ORELAP ID: 4133
 Lab OLCC ID: 1004748743D

Weight used (g)	Weight Set ID	Acceptance Criteria	Initial Measured	Initial P/F	Final Measured	Final P/F
0.5	SAMP_CAL_02	±2.5%	0.5	P	0.5	P
200		±2.5%	199.98		199.98	



Container Type	METRC Harvest/Processing Lot ID #:				Product Type	Client Sample Name	Product Date	Batch Size (g)
Storage Bin					Usable Marijuana	Green Crack	8/10/2018	4540
METRC Batch ID	Product Temp (°C)	Humidity (%)	# of Containers	Sample Media	# Zones	# of Inc.	1* Sample Size (g)	Sample Name
1a4010300098bf000001201	21.3	31.7	4	Mylar Bag	4	9	2.7	Green Crack Primary
Lab Sample ID	Container ID		Increment Zone	Sampling Media Wt. (g)	Wt. Inc+Media (g)	Increment Weight (g)	Sample METRC ID#	
18H0039-01	Green Crack-1		A2	0	2.7	2.7	1208	
18H0039-01	Green Crack-1		A4	2.7	5.4	2.7	1208	
18H0039-01	Green Crack-2		B1	5.4	8.1	2.7	1208	
18H0039-01	Green Crack-2		B2	8.1	10.8	2.7	1208	
18H0039-01	Green Crack-2		B4	10.8	13.5	2.7	1208	
18H0039-01	Green Crack-2		B4	13.5	16.2	2.7	1208	
18H0039-01	Green Crack-3		C2	16.2	18.9	2.7	1208	
18H0039-01	Green Crack-4		D2	18.9	21.6	2.7	1208	
18H0039-01	Green Crack-4		D4	21.6	24.49	2.89	1208	
Minimum Sample Size = 22.7g (Usable Marijuana Only)					Total Sample Mass = 24.49			
Observations and Abnormalities:		Batch #	Marks/Labels	Cont. Types/Sizes	Uniform	Plant Colors	Shape and Size	Sampling Plan

Container Type	METRC Harvest/Processing Lot ID #:				Product Type	Client Sample Name	Product Date	Batch Size (g)
Storage Bin					Usable Marijuana	Waikiki Queen	8/10/2018	2270
METRC Batch ID	Product Temp (°C)	Humidity (%)	# of Containers	Sample Media	# Zones	# of Inc.	1* Sample Size (g)	Sample Name
1a4010300098bf000001202	20.7	31.7	2	Mylar Bag	4	8	1.6	Waikiki Queen Primary
Lab Sample ID	Container ID		Increment Zone	Sampling Media Wt. (g)	Wt. Inc+Media (g)	Increment Weight (g)	Sample METRC ID#	
18H0039-02	Waikiki Queen-1		A3	0	1.6	1.6	1207	
18H0039-02	Waikiki Queen-1		A3	1.6	3.2	1.6	1207	
18H0039-02	Waikiki Queen-1		A4	3.2	4.8	1.6	1207	
18H0039-02	Waikiki Queen-2		B2	4.8	6.4	1.6	1207	
18H0039-02	Waikiki Queen-2		B2	6.4	8	1.6	1207	
18H0039-02	Waikiki Queen-2		B3	8	9.6	1.6	1207	
18H0039-02	Waikiki Queen-2		B3	9.6	11.2	1.6	1207	
18H0039-02	Waikiki Queen-2		B4	11.2	12.88	1.68	1207	

				Minimum Sample Size = 11.3g (Usable Marijuana Only)				Total Sample Mass = 12.88			
Observations and Abnormalities:		Batch #	Marks/Labels	Cont. Types/Sizes	Uniform	Plant Colors	Shape and Size	Sampling Plan			

Container Type	METRC Harvest/Processing Lot ID #:				Product Type	Client Sample Name	Product Date	Batch Size (g)			
Storage Bin					Usable Marijuana	9lb Hammer	8/10/2018	6810			
METRC Batch ID	Product Temp (°C)	Humidity (%)	# of Containers	Sample Media	# Zones	# of Inc.	1" Sample Size (g)	Sample Name			
1a4010300098bf000001203	20.6	31.7	6	Mylar Bag	4	10	3.5	9lb Hammer Primary			
Lab Sample ID	Container ID		Increment Zone	Sampling Media Wt. (g)	Wt. Inc+Media (g)	Increment Weight (g)	Sample METRC ID#				
18H0039-03	9lb Hammer-1		A3	0	3.5	3.5	1206				
18H0039-03	9lb Hammer-2		B1	3.5	7	3.5	1206				
18H0039-03	9lb Hammer-2		B2	7	10.5	3.5	1206				
18H0039-03	9lb Hammer-2		B2	10.5	14	3.5	1206				
18H0039-03	9lb Hammer-3		C1	14	17.5	3.5	1206				
18H0039-03	9lb Hammer-3		C3	17.5	21	3.5	1206				
18H0039-03	9lb Hammer-3		C3	21	24.5	3.5	1206				
18H0039-03	9lb Hammer-4		D1	24.5	28	3.5	1206				
18H0039-03	9lb Hammer-4		D2	28	31.5	3.5	1206				
18H0039-03	9lb Hammer-5		E1	31.5	35.06	3.56	1206				
				Minimum Sample Size = 34.2g (Usable Marijuana Only)				Total Sample Mass = 35.06			
Observations and Abnormalities:		Batch #	Marks/Labels	Cont. Types/Sizes	Uniform	Plant Colors	Shape and Size	Sampling Plan			

Container Type	METRC Harvest/Processing Lot ID #:				Product Type	Client Sample Name	Product Date	Batch Size (g)
Storage Bin					Usable Marijuana	Gorilla Renegade	6/27/2018	1362
METRC Batch ID	Product Temp (°C)	Humidity (%)	# of Containers	Sample Media	# Zones	# of Inc.	1" Sample Size (g)	Sample Name
1a4010300098bf000001204	19.8	31.7	1	Mylar Bag	4	7	1	Gorilla Renegade Primary
Lab Sample ID	Container ID		Increment Zone	Sampling Media Wt. (g)	Wt. Inc+Media (g)	Increment Weight (g)	Sample METRC ID#	
18H0039-04	Gorilla Renegade-1		A2	0	1	1	1212	
18H0039-04	Gorilla Renegade-1		A2	1	2	1	1212	
18H0039-04	Gorilla Renegade-1		A2	2	3	1	1212	
18H0039-04	Gorilla Renegade-1		A3	3	4	1	1212	
18H0039-04	Gorilla Renegade-1		A4	4	5	1	1212	
18H0039-04	Gorilla Renegade-1		A4	5	6	1	1212	

18H0039-04	Gorilla Renegade-1	A4	6	7.05	1.05	1212	
Minimum Sample Size = 7g (Usable Marijuana Only)				Total Sample Mass = 7.05			
Observations and Abnormalities:	Batch #	Marks/Labels	Cont. Types/Sizes	Uniform	Plant Colors	Shape and Size	Sampling Plan

Container Type	METRC Harvest/Processing Lot ID #:				Product Type	Client Sample Name	Product Date	Batch Size (g)
Storage Bin					Usable Marijuana	Golden Pineapple	6/27/2018	1816
METRC Batch ID	Product Temp (°C)	Humidity (%)	# of Containers	Sample Media	# Zones	# of Inc.	1* Sample Size (g)	Sample Name
1a4010300098bf000001200	19.6	31.7	2	Mylar Bag	4	8	1.5	Golden Pineapple Primary
Lab Sample ID	Container ID		Increment Zone	Sampling Media Wt. (g)	Wt. Inc+Media (g)	Increment Weight (g)	Sample METRC ID#	
18H0039-05	Golden Pineapple-1		A2	0	1.5	1.5	1209	
18H0039-05	Golden Pineapple-1		A3	1.5	3	1.5	1209	
18H0039-05	Golden Pineapple-1		A4	3	4.5	1.5	1209	
18H0039-05	Golden Pineapple-2		B2	4.5	6	1.5	1209	
18H0039-05	Golden Pineapple-2		B2	6	7.5	1.5	1209	
18H0039-05	Golden Pineapple-2		B2	7.5	9	1.5	1209	
18H0039-05	Golden Pineapple-2		B3	9	10.5	1.5	1209	
18H0039-05	Golden Pineapple-2		B4	10.5	12.15	1.65	1209	
Minimum Sample Size = 9.1g (Usable Marijuana Only)				Total Sample Mass = 12.15				
Observations and Abnormalities:	Batch #	Marks/Labels	Cont. Types/Sizes	Uniform	Plant Colors	Shape and Size	Sampling Plan	

Container Type	METRC Harvest/Processing Lot ID #:				Product Type	Client Sample Name	Product Date	Batch Size (g)
Storage Bin					Usable Marijuana	9lb Hammer	6/27/2018	1362
METRC Batch ID	Product Temp (°C)	Humidity (%)	# of Containers	Sample Media	# Zones	# of Inc.	1* Sample Size (g)	Sample Name
1a4010300098bf000001199	19.7	31.7	1	Mylar Bag	4	7	1	9lb Hammer Primary

Lab Sample ID	Container ID	Increment Zone	Sampling Media Wt. (g)	Wt. Inc+Media (g)	Increment Weight (g)	Sample METRC ID#	
18H0039-06	9lb Hammer-1	A1	0	1	1	1211	
18H0039-06	9lb Hammer-1	A2	1	2	1	1211	
18H0039-06	9lb Hammer-1	A2	2	3	1	1211	
18H0039-06	9lb Hammer-1	A3	3	4	1	1211	
18H0039-06	9lb Hammer-1	A3	4	5	1	1211	
18H0039-06	9lb Hammer-1	A3	5	6	1	1211	
18H0039-06	9lb Hammer-1	A4	6	7.04	1.04	1211	
Minimum Sample Size = 7g (Usable Marijuana Only)			Total Sample Mass = 7.04				
Observations and Abnormalities:	Batch #	Marks/Labels	Cont. Types/Sizes	Uniform	Plant Colors	Shape and Size	Sampling Plan

Container Type	METRC Harvest/Processing Lot ID #:			Product Type	Client Sample Name	Product Date	Batch Size (g)	
Storage Bin				Usable Marijuana	Maui Wowie	6/27/2018	2270	
METRC Batch ID	Product Temp (°C)	Humidity (%)	# of Containers	Sample Media	# Zones	# of Inc.	1" Sample Size (g)	Sample Name
1a4010300098bf000001198	19.9	31.7	2	Mylar Bag	4	8	1.6	Maui Wowie Primary
Lab Sample ID	Container ID	Increment Zone	Sampling Media Wt. (g)	Wt. Inc+Media (g)	Increment Weight (g)	Sample METRC ID#		
18H0039-07	Maui Wowie-1	A2	0	1.6	1.6	1210		
18H0039-07	Maui Wowie-1	A3	1.6	3.2	1.6	1210		
18H0039-07	Maui Wowie-2	B1	3.2	4.8	1.6	1210		
18H0039-07	Maui Wowie-2	B1	4.8	6.4	1.6	1210		
18H0039-07	Maui Wowie-2	B2	6.4	8	1.6	1210		
18H0039-07	Maui Wowie-2	B4	8	9.6	1.6	1210		
18H0039-07	Maui Wowie-2	B4	9.6	11.2	1.6	1210		
18H0039-07	Maui Wowie-2	B4	11.2	12.8	1.6	1210		
Minimum Sample Size = 11.3g (Usable Marijuana Only)			Total Sample Mass = 12.8					
Observations and Abnormalities:	Batch #	Marks/Labels	Cont. Types/Sizes	Uniform	Plant Colors	Shape and Size	Sampling Plan	

CHAIN OF CUSTODY

SC Laboratories Oregon LLC
 15865 SW 74th Avenue, Ste 110
 Tigard OR, 97224
 (503) 272-8830
 ORELAP ID # 4133
www.sclabs.com

Client: Western Oregon Botanicals
 Address: 18270 SW Benton Rd Sherwood OR
 Date Sampled: 8/15/2015
 OLCC License #: 02010021071494
 OLCC License Type: Grower
 Email: abdulla.naimi@yahoo.co
 Phone: 208-989-3449
 Sampler OLCC License #: 010-1004748743D

COC #: 18H0039
 Work Order #: 18H0039
 Received By: AS
 Received Date: 8-15-18
 Courier: Scott Forster
 Name of Sampler: Scott Forster
 Transfer Manifest #: 908866
 Place where Sampled: 18270 SW Benton Rd Sherwood OR



Sample Type Legend
 U - Usable Marijuana
 C - Concentrate
 P - Product
 O - Other

Sample Name	Time	METRC Label	Unique Batch Number	SC Labs LIMS ID	Sample Type	Total Sample Mass	# of Increments	TESTS REQUESTED						Sample Specific Notes
								Potency	Water Activity	Moisture Content	Pesticide	Residual Solvent	Terpene	
Green Crack Primary		1208	Green Crack	18H0039-01	U	24.49	9	X	X	X	X	X	X	
Waikiki Queen Primary		1207	Waikiki Queen	18H0039-02	U	12.88	8	X	X	X	X	X	X	
9lb Hammer Primary		1206	9lb Hammer	18H0039-03	U	35.06	10	X	X	X	X	X	X	
Gorilla Renegade Primary		1212	Gorilla Renegade	18H0039-04	U	7.05	7	X	X	X	X	X	X	
Golden Pineapple Primary		1209	Golden Pineapple	18H0039-05	U	12.15	8	X	X	X	X	X	X	
9lb Hammer Primary		1211	9lb Hammer	18H0039-06	U	7.04	7	X	X	X	X	X	X	
Maui Wowie Primary		1210	Maui Wowie	18H0039-07	U	12.8	8	X	X	X	X	X	X	

Notes/Special Considerations: Opt OUT of Sample Duplicate Yes No

Samples Relinquished	Samples Received
Print Name: ABDULLA NAIMI Date: 8/15 Representative of: WOB Signature: [Signature] Time: 11:45	Print Name: Scott F. Date: 8/15 Representative of: SCLABS Signature: [Signature] Time: 11:45