

Sample Name: **9 lb Hammer**
 Tested for: **Western Oregon Botanicals**
Compliance - Usable

Laboratory ID: 19B0022-01

Matrix: Useable Marijuana

Sample Metrc ID: 1A40103000098BF000001419

Strain: 9 lb Hammer

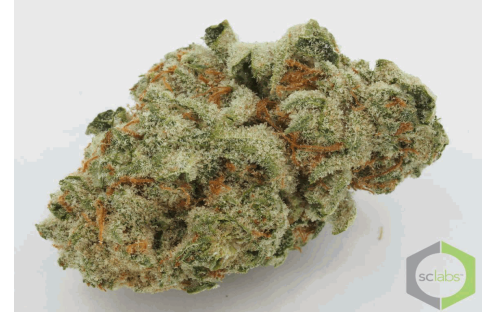
Lot # 24-Jan

Date Sampled: 02/07/19 09:35

Batch RFID: 1A40103000098BF000001414

Date Accepted: 02/07/19

Batch Size: 1239 (g)



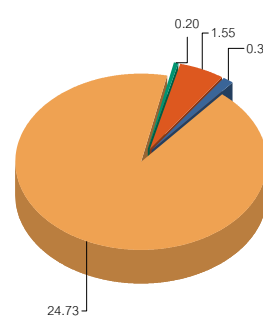
Potency Analysis

Date Extracted: 02/12/19

Analysis Method/SOP: Potency

Date Analyzed: 02/12/19

* - ORELAP certified analyte

Cannabinoids	% weight	mg/g	LOQ (%)	Cannabinoids Profile										
Total THC ((THCA*0.877)+d9)	22.06	220.6	0.03	 <table border="1"> <tr> <td>THC</td> <td>0.37</td> </tr> <tr> <td>THCA</td> <td>24.73</td> </tr> <tr> <td>CBG</td> <td>0.20</td> </tr> <tr> <td>CBGA</td> <td>1.55</td> </tr> <tr> <td>Total</td> <td>26.85</td> </tr> </table>	THC	0.37	THCA	24.73	CBG	0.20	CBGA	1.55	Total	26.85
THC	0.37													
THCA	24.73													
CBG	0.20													
CBGA	1.55													
Total	26.85													
Total CBD ((CBDA*0.877)+CBD)	< LOQ	< LOQ	0.03											
d9-THC (d9-Tetrahydrocannabinol)*	0.37	3.7	0.04											
d8-THC (d8-Tetrahydrocannabinol)*	< LOQ	< LOQ	0.04											
THCA (d9-Tetrahydrocannabinolic Acid)*	24.73	247.3	0.06											
CBD (Cannabidiol)*	< LOQ	< LOQ	0.03											
CBDA (Cannabidiolic Acid)*	< LOQ	< LOQ	0.06											
CBN (Cannabinol)*	< LOQ	< LOQ	0.03											
CBG (Cannabigerol)*	0.20	2	0.04											
CBGA (Cannabigerolic Acid)	1.55	15.5	0.04											
CBDV (Cannabidivarin)*	< LOQ	< LOQ	0.04											
CBDVA (Cannabidivarinic Acid)	< LOQ	< LOQ	0.04											
CBC (Cannabichromene)*	< LOQ	< LOQ	0.04											
THCV (Tetrahydrocannabivarin)	< LOQ	< LOQ	0.04											
Total Cannabinoids	26.85	268.5	0.03											

Water Activity and Moisture

Analyte	Result	Limit	Units	LOQ	Analyzed	Method
Water Activity	0.508	0.65	AW	0.0300	02/12/2019	Water Activity
Percent Moisture	12.2	15	%	0.10	02/12/2019	Moisture

Cannabinoids reported as dry weight (moisture corrected)

Results above the action level are highlighted in red #.

<LOQ - Results below the Limit of Quantitation - Compound not detected



Brian Weigel
Lab Director

These results relate only to the sample included on this report. The report may not be reproduced except in full, without the written permission of SC Laboratories. Samples tested in accordance with Oregon Administrative Rules, TNI 2009 Standard and SC Laboratories quality assurance plan unless otherwise noted.

Sample Name: 9 lb Hammer	Date Sampled: 02/07/19 09:35
Tested for: Western Oregon Botanicals	Date Accepted: 02/07/19
Compliance - Usable	
Laboratory ID: 19B0022-01 Strain: 9 lb Hammer	Sample Metrc ID: 1A40103000098BF000001419
Matrix: Useable Marijuana	Batch RFID: 1A40103000098BF000001414
Lot # 24-Jan	Batch Size: 1239 (g)

Terpene Analysis

Date Extracted: 02/12/19 Analysis Method/SOP: Potency
Date Analyzed: 02/12/19

Analyte	Result (%)	LOQ	Analyte	Result	LOQ
alpha Pinene	0.226	0.019	Myrcene	1.002	0.019
alpha Phellandrene	< LOQ	0.019	3-Carene	< LOQ	0.019
alpha Terpinene	< LOQ	0.019	Limonene	0.127	0.019
Terpinolene	< LOQ	0.019	Linalool	0.087	0.019
Fenchol	< LOQ	0.019	Borneol	< LOQ	0.019
Terpineol	0.023	0.019	Geraniol	< LOQ	0.019
alpha Humulene	0.035	0.019	beta Caryophyllene	0.104	0.019
Caryophyllene Oxide	< LOQ	0.019	alpha Bisabolol	0.031	0.019
Camphene	< LOQ	0.019	beta Pinene	0.091	0.019
Ocimene	0.120	0.019	Sabinene	< LOQ	0.019
Camphor	< LOQ	0.019	Isoborneol	< LOQ	0.019
Menthol	< LOQ	0.019	alpha Cedrene	< LOQ	0.019
Nerolidol	< LOQ	0.019	R-(+)-Pulegone	< LOQ	0.019
Eucalyptol	< LOQ	0.019	p-Cymene	< LOQ	0.019
(-)-Isopulegol	< LOQ	0.019	Geranyl Acetate	< LOQ	0.019
Guaiol	0.060	0.019	Valencene	0.022	0.019
Phytol	0.078	0.019	Citronellol	0.023	0.019
gamma-Terpinene	< LOQ	0.019			
Total Terpenes				2.030 %	

<LOQ - Results below the Limit of Quantitation - Compound not detected
Terpene Analysis is not ORELAP Accredited.

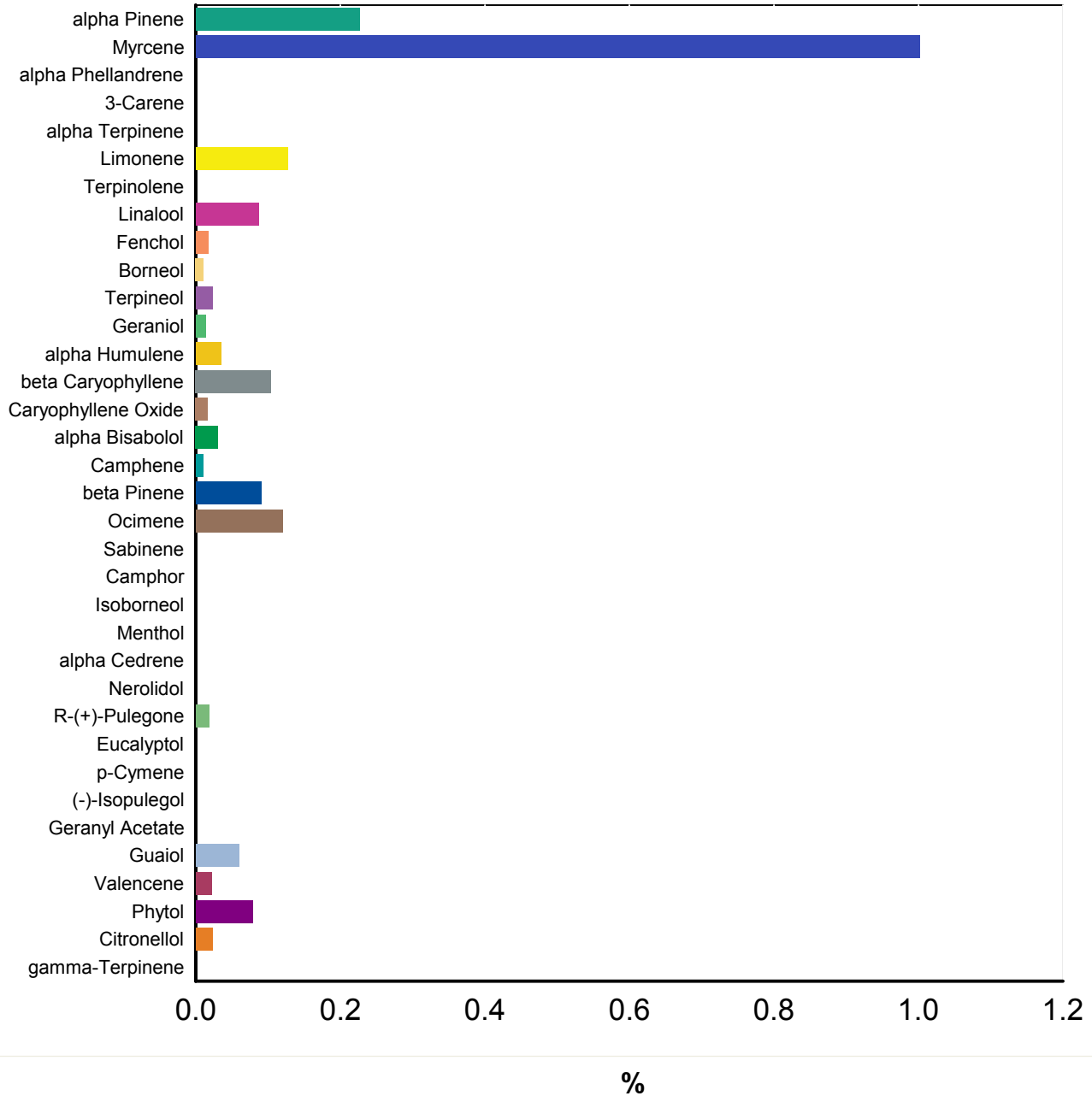


Brian Weigel
Lab Director

These results relate only to the sample included on this report. The report may not be reproduced except in full, without the written permission of SC Laboratories. Samples tested in accordance with Oregon Administrative Rules, TNI 2009 Standard and SC Laboratories quality assurance plan unless otherwise noted.

Sample Name: 9 lb Hammer	Date Sampled: 02/07/19 09:35
Tested for: Western Oregon Botanicals	Date Accepted: 02/07/19 18:24
Compliance - Usable	
Laboratory ID: 19B0022-01	Matrix: Useable Marijuana
Client/Metric ID: 1A40103000098BF000001419	

Terpene Profile




Brian Weigel
Lab Director

These results relate only to the sample included on this report. The report may not be reproduced except in full, without the written permission of SC Laboratories. Samples tested in accordance with Oregon Administrative Rules, TNI 2009 Standard and SC Laboratories quality assurance plan unless otherwise noted.

Sample Name: **9 lb Hammer** Date Sampled: **02/07/19 09:35**
 Tested for: **Western Oregon Botanicals** Date Accepted: **02/07/19**
Compliance - Usable

Laboratory ID: **19B0022-01** Strain: **9 lb Hammer** Sample Metrc ID: **1A40103000098BF000001419**
 Matrix: **Useable Marijuana** Batch RFID: **1A40103000098BF000001414**
 Lot # **24-Jan** Batch Size: **1239 (g)**

Pesticide Analysis in ppm

Date Extracted: 02/12/19 Analysis Method/SOP: Pesticides
 Date Analyzed: 02/12/19 Results above the action levels are highlighted in red #.

Analyte	Result	Action Level	LOQ	Analyte	Result	Action Level	LOQ
Abamectin	< LOQ	0.5	0.24	Acephate	< LOQ	0.4	0.19
Acequinocyl	< LOQ	2	0.97	Acetamiprid	< LOQ	0.2	0.10
Aldicarb	< LOQ	0.4	0.19	Azoxystrobin	< LOQ	0.2	0.10
Bifenazate	< LOQ	0.2	0.10	Bifenthrin	< LOQ	0.2	0.10
Boscalid	< LOQ	0.4	0.19	Carbaryl	< LOQ	0.2	0.10
Carbofuran	< LOQ	0.2	0.10	Chlorantraniliprole	< LOQ	0.2	0.10
Chlorfenapyr	< LOQ	1	0.48	Chlorpyrifos	< LOQ	0.2	0.10
Clofentezine	< LOQ	0.2	0.10	Cyfluthrin	< LOQ	1	0.48
Cypermethrin	< LOQ	1	0.48	Daminozide	< LOQ	1	0.48
DDVP (Dichlorvos)	< LOQ	1	0.48	Diazinon	< LOQ	0.2	0.10
Dimethoate	< LOQ	0.2	0.10	Ethoprophos	< LOQ	0.2	0.10
Etofenprox	< LOQ	0.4	0.19	Etoxazole	< LOQ	0.2	0.10
Fenoxycarb	< LOQ	0.2	0.10	Fenpyroximate	< LOQ	0.4	0.19
Fipronil	< LOQ	0.4	0.19	Fonicamid	< LOQ	1	0.48
Fludioxonil	< LOQ	0.4	0.19	Hexythiazox	< LOQ	1	0.48
Imazalil	< LOQ	0.2	0.10	Imidacloprid	< LOQ	0.4	0.19
Kresoxim-methyl	< LOQ	0.4	0.19	Malathion	< LOQ	0.2	0.10
Metalaxyl	< LOQ	0.2	0.10	Methiocarb	< LOQ	0.2	0.10
Methomyl	< LOQ	0.4	0.19	Methyl parathion	< LOQ	0.2	0.10
MGK-264	< LOQ	0.2	0.10	Myclobutanil	< LOQ	0.2	0.10
Naled	< LOQ	0.5	0.24	Oxamyl	< LOQ	1	0.48
Paclobutrazol	< LOQ	0.4	0.19	Permethrins (total)	< LOQ	0.2	0.10
Phosmet	< LOQ	0.2	0.10	Piperonyl butoxide	< LOQ	2	0.48
Prallethrin	< LOQ	0.2	0.10	Propiconazole	< LOQ	0.4	0.19
Propoxur	< LOQ	0.2	0.10	Pyrethrins (total)	< LOQ	1	0.48
Pyridaben	< LOQ	0.2	0.10	Spinosad	< LOQ	0.2	0.10
Spiromesifen	< LOQ	0.2	0.10	Spirotetramat	< LOQ	0.2	0.10
Spiroxamine	< LOQ	0.4	0.19	Tebuconazole	< LOQ	0.4	0.19
Thiacloprid	< LOQ	0.2	0.10	Thiamethoxam	< LOQ	0.2	0.10
Trifloxystrobin	< LOQ	0.2	0.10				

<LOQ - Results below the Limit of Quantitation - Compound not detected



Brian Weigel
Lab Director

These results relate only to the sample included on this report. The report may not be reproduced except in full, without the written permission of SC Laboratories. Samples tested in accordance with Oregon Administrative Rules, TNI 2009 Standard and SC Laboratories quality assurance plan unless otherwise noted.

Case Narrative

Receiving: Samples 19B0022-01 (1419) & 19B0022-02 (1420) composited for Pesticide, Water Activity and Moisture Content. Samples 19B0022-03 (1421), 19B0022-04 (1422) & 19B0022-05 (1423) composited for Pesticide, Water Activity and Moisture Content.

Terpenes - Phytol result was above QC criteria in the Method Blank.

Phytol 1 and Phytol 2 exceeded normally accepted RPD criteria in the Sample Duplicate due to relatively large variations in very small values.

Pesticides - Acephate, Acetamiprid, Daminozide, Flonicamid, Methomyl, Oxamyl, Thiachloprid, and Thiamethoxam had a high MS RPD. However, BS, MS, and MSD recovered within acceptable limits and all samples are ND, so results are acceptable.

**Quality Control
Potency**

Batch: B190226 - Potency/Terpenes

Blank(B190226-BLK1)			Extracted - 02/12/19 9:14 Analyzed - 02/12/19 17:41					
Analyte	Result	Units	Spike Level	Source Result	%REC	%REC Limits	RPD	RPD Limit
d9-THC (d9-Tetrahydrocannabinol)	< LOQ	%						
d8-THC (d8-Tetrahydrocannabinol)	< LOQ	%						
THCA (d9-Tetrahydrocannabinolic Acid)	< LOQ	%						
CBD (Cannabidiol)	< LOQ	%						
CBDA (Cannabidiolic Acid)	< LOQ	%						
CBN (Cannabinol)	< LOQ	%						
CBG (Cannabigerol)	< LOQ	%						
CBGA (Cannabigerolic Acid)	< LOQ	%						
CBDV (Cannabidivarin)	< LOQ	%						
CBDVA (Cannabidivarinic Acid)	< LOQ	%						
CBC (Cannabichromene)	< LOQ	%						
THCV (Tetrahydrocannabivarin)	< LOQ	%						

Duplicate(B190226-DUP1)			Extracted - 02/12/19 9:14 Analyzed - 02/12/19 17:49					
Analyte	Result	Units	Spike Level	Source Result	%REC	%REC Limits	RPD	RPD Limit
d9-THC (d9-Tetrahydrocannabinol)	0.36	%		0.37			2.06	20
d8-THC (d8-Tetrahydrocannabinol)	< LOQ	%		< LOQ				20
CBD (Cannabidiol)	< LOQ	%		< LOQ				20
CBDA (Cannabidiolic Acid)	0.05	%		0.05			3.59	20
CBN (Cannabinol)	< LOQ	%		< LOQ				20
CBG (Cannabigerol)	0.19	%		0.20			6.90	20



Brian Weigel
Lab Director

These results relate only to the sample included on this report. The report may not be reproduced except in full, without the written permission of SC Laboratories. Samples tested in accordance with Oregon Administrative Rules, TNI 2009 Standard and SC Laboratories quality assurance plan unless otherwise noted.

Quality Control Potency (Continued)

Batch: B190226 - Potency/Terpenes (Continued)

Duplicate(B190226-DUP1)		Extracted - 02/12/19 9:14 Analyzed - 02/12/19 17:49						
Analyte	Result	Units	Spike Level	Source Result	%REC	%REC Limits	RPD	RPD Limit
CBGA (Cannabigerolic Acid)	1.49	%		1.55			3.96	20
CBDV (Cannabidivarin)	< LOQ	%		< LOQ				20
CBDVA (Cannabidivarinic Acid)	< LOQ	%		< LOQ				20
CBC (Cannabichromene)	< LOQ	%		< LOQ				20
THCV (Tetrahydrocannabivarin)	< LOQ	%		< LOQ				20

LCS(B190226-BS1)		Extracted - 02/12/19 9:14 Analyzed - 02/12/19 17:32						
Analyte	Result	Units	Spike Level	Source Result	%REC	%REC Limits	RPD	RPD Limit
d9-THC (d9-Tetrahydrocannabinol)	0.04	%	0.0400		94.4	80-120		
CBD (Cannabidiol)	0.04	%	0.0400		91.2	80-120		
CBDA (Cannabidiolic Acid)	0.04	%	0.0400		111	80-120		
CBN (Cannabinol)	0.04	%	0.0400		92.7	80-120		



Brian Weigel
 Lab Director

These results relate only to the sample included on this report. The report may not be reproduced except in full, without the written permission of SC Laboratories. Samples tested in accordance with Oregon Administrative Rules, TNI 2009 Standard and SC Laboratories quality assurance plan unless otherwise noted.

Quality Control Pesticide Analysis

Batch: B190228 - Pesticide Prep

Blank(B190228-BLK1)		Extracted - 02/12/19 9:18 Analyzed - 02/12/19 18:17						
Analyte	Result	Units	Spike Level	Source Result	%REC	%REC Limits	RPD	RPD Limit
Abamectin	< LOQ	ppm						
Acephate	< LOQ	ppm						
Acequinocyl	< LOQ	ppm						
Acetamiprid	< LOQ	ppm						
Aldicarb	< LOQ	ppm						
Azoxystrobin	< LOQ	ppm						
Bifenazate	< LOQ	ppm						
Bifenthrin	< LOQ	ppm						
Boscalid	< LOQ	ppm						
Carbaryl	< LOQ	ppm						
Carbofuran	< LOQ	ppm						
Chlorantraniliprole	< LOQ	ppm						
Chlorfenapyr	< LOQ	ppm						
Chlorpyrifos	< LOQ	ppm						
Clofentezine	< LOQ	ppm						
Cyfluthrin	< LOQ	ppm						
Cypermethrin	< LOQ	ppm						
Daminozide	< LOQ	ppm						
DDVP (Dichlorvos)	< LOQ	ppm						
Diazinon	< LOQ	ppm						
Dimethoate	< LOQ	ppm						
Ethoprophos	< LOQ	ppm						
Etofenprox	< LOQ	ppm						
Etoxazole	< LOQ	ppm						
Fenoxycarb	< LOQ	ppm						
Fenpyroximate	< LOQ	ppm						
Fipronil	< LOQ	ppm						
Fonicamid	< LOQ	ppm						
Fludioxonil	< LOQ	ppm						
Hexythiazox	< LOQ	ppm						
Imazalil	< LOQ	ppm						
Imidacloprid	< LOQ	ppm						
Kresoxim-methyl	< LOQ	ppm						
Malathion	< LOQ	ppm						
Metalaxyl	< LOQ	ppm						



Brian Weigel
Lab Director

These results relate only to the sample included on this report. The report may not be reproduced except in full, without the written permission of SC Laboratories. Samples tested in accordance with Oregon Administrative Rules, TNI 2009 Standard and SC Laboratories quality assurance plan unless otherwise noted.

Quality Control

Pesticide Analysis (Continued)

Batch: B190228 - Pesticide Prep (Continued)

Blank(B190228-BLK1)			Extracted - 02/12/19 9:18 Analyzed - 02/12/19 18:17					
Analyte	Result	Units	Spike Level	Source Result	%REC	%REC Limits	RPD	RPD Limit
Methiocarb	< LOQ	ppm						
Methomyl	< LOQ	ppm						
Methyl parathion	< LOQ	ppm						
MGK-264	< LOQ	ppm						
Myclobutanil	< LOQ	ppm						
Naled	< LOQ	ppm						
Oxamyl	< LOQ	ppm						
Paclbutrazol	< LOQ	ppm						
Permethrins (total)	< LOQ	ppm						
Phosmet	< LOQ	ppm						
Piperonyl butoxide	< LOQ	ppm						
Prallethrin	< LOQ	ppm						
Propiconazole	< LOQ	ppm						
Propoxur	< LOQ	ppm						
Pyrethrins (total)	< LOQ	ppm						
Pyridaben	< LOQ	ppm						
Spinosad	< LOQ	ppm						
Spiromesifen	< LOQ	ppm						
Spirotetramat	< LOQ	ppm						
Spiroxamine	< LOQ	ppm						
Tebuconazole	< LOQ	ppm						
Thiacloprid	< LOQ	ppm						
Thiamethoxam	< LOQ	ppm						
Trifloxystrobin	< LOQ	ppm						

LCS(B190228-BS1)			Extracted - 02/12/19 9:18 Analyzed - 02/12/19 18:33					
Analyte	Result	Units	Spike Level	Source Result	%REC	%REC Limits	RPD	RPD Limit
Abamectin	2.79	ppm	0.980		285	29-150		
Acephate	1.53	ppm	1.00		153	48-133		
Acequinocyl	2.32	ppm	1.00		232	48-150		
Acetamiprid	1.06	ppm	1.00		106	45-150		
Aldicarb	1.24	ppm	1.00		124	58-134		
Azoxystrobin	1.31	ppm	1.00		131	25-150		
Bifenazate	1.66	ppm	1.00		166	46-141		
Bifenthrin	1.78	ppm	1.00		178	55-150		



Brian Weigel
Lab Director

These results relate only to the sample included on this report. The report may not be reproduced except in full, without the written permission of SC Laboratories. Samples tested in accordance with Oregon Administrative Rules, TNI 2009 Standard and SC Laboratories quality assurance plan unless otherwise noted.

Quality Control Pesticide Analysis (Continued)

Batch: B190228 - Pesticide Prep (Continued)

LCS(B190228-BS1)		Extracted - 02/12/19 9:18 Analyzed - 02/12/19 18:33						
Analyte	Result	Units	Spike Level	Source Result	%REC	%REC Limits	RPD	RPD Limit
Boscalid	1.48	ppm	1.00		148	34-141		
Carbaryl	1.10	ppm	1.00		110	67-125		
Carbofuran	1.23	ppm	1.00		123	71-128		
Chlorantraniliprole	1.33	ppm	1.00		133	43-138		
Chlorfenapyr	1.50	ppm	1.00		150	45-150		
Chlorpyrifos	1.63	ppm	1.00		163	36-150		
Clofentezine	1.09	ppm	1.00		109	59-135		
Cyfluthrin	1.90	ppm	1.00		190	33-150		
Cypermethrin	1.68	ppm	1.00		168	47-148		
Daminozide	0.78	ppm	1.00		77.8	18-116		
DDVP (Dichlorvos)	1.29	ppm	1.00		129	65-150		
Diazinon	1.10	ppm	1.00		110	60-130		
Dimethoate	1.11	ppm	1.00		111	65-131		
Ethoprophos	1.48	ppm	1.00		148	52-150		
Etofenprox	1.69	ppm	1.00		169	60-139		
Etoxazole	1.65	ppm	1.00		165	59-122		
Fenoxycarb	1.61	ppm	1.00		161	39-146		
Fenpyroximate	1.44	ppm	1.00		144	44-147		
Fipronil	1.38	ppm	1.00		138	40-143		
Flonicamid	1.95	ppm	1.00		195	50-142		
Fludioxonil	21.0	ppm	1.00		2100	49-150		
Hexythiazox	1.61	ppm	1.00		161	41-142		
Imazalil	1.18	ppm	1.00		118	61-127		
Imidacloprid	1.62	ppm	1.00		162	36-150		
Kresoxim-methyl	0.99	ppm	1.00		98.6	53-131		
Malathion	1.65	ppm	1.00		165	55-134		
Metalaxyl	1.47	ppm	1.00		147	64-127		
Methiocarb	1.51	ppm	1.00		151	53-144		
Methomyl	1.85	ppm	1.00		185	47-141		
Methyl parathion	1.81	ppm	1.00		181	48-142		
MGK-264	0.93	ppm	0.630		148	38-150		
Myclobutanil	1.55	ppm	1.00		155	45-146		
Naled	1.03	ppm	1.00		103	28-113		
Oxamyl	2.08	ppm	1.00		208	48-133		
Paclobutrazol	1.67	ppm	1.00		167	37-150		



Brian Weigel
 Lab Director

These results relate only to the sample included on this report. The report may not be reproduced except in full, without the written permission of SC Laboratories. Samples tested in accordance with Oregon Administrative Rules, TNI 2009 Standard and SC Laboratories quality assurance plan unless otherwise noted.

Quality Control Pesticide Analysis (Continued)

Batch: B190228 - Pesticide Prep (Continued)

LCS(B190228-BS1)		Extracted - 02/12/19 9:18 Analyzed - 02/12/19 18:33						
Analyte	Result	Units	Spike Level	Source Result	%REC	%REC Limits	RPD	RPD Limit
Permethrins (total)	1.79	ppm				46-150		
Phosmet	1.56	ppm	1.00		156	48-137		
Piperonyl butoxide	1.68	ppm	1.00		168	43-142		
Prallethrin	1.70	ppm	1.00		170	48-144		
Propiconazole	1.11	ppm	1.00		111	52-136		
Propoxur	1.18	ppm	1.00		118	61-131		
Pyrethrins (total)	1.48	ppm				24-150		
Pyridaben	1.61	ppm	1.00		161	40-150		
Spinosad	0.90	ppm	0.820		110	42-148		
Spiromesifen	1.61	ppm	1.00		161	38-150		
Spirotetramat	1.35	ppm	1.00		135	37-132		
Spiroxamine	0.93	ppm	0.550		170	49-136		
Tebuconazole	1.05	ppm	1.00		105	46-142		
Thiacloprid	1.09	ppm	1.00		109	48-150		
Thiamethoxam	2.14	ppm	1.00		214	46-138		
Trifloxystrobin	0.96	ppm	1.00		96.3	44-144		

Matrix Spike(B190228-MS1)		Extracted - 02/12/19 9:18 Analyzed - 02/12/19 18:49						
Analyte	Result	Units	Spike Level	Source Result	%REC	%REC Limits	RPD	RPD Limit
Abamectin	6.16	ppm	1.84	< LOQ	334	15-150		
Acephate	2.89	ppm	1.88	< LOQ	154	45-130		
Acequinocyl	2.38	ppm	1.88	< LOQ	126	31-146		
Acetamiprid	1.79	ppm	1.88	< LOQ	95.3	39-150		
Aldicarb	2.00	ppm	1.88	< LOQ	106	47-143		
Azoxystrobin	2.21	ppm	1.88	< LOQ	118	21-150		
Bifenazate	2.90	ppm	1.88	< LOQ	154	31-150		
Bifenthrin	1.44	ppm	1.88	< LOQ	76.5	23-132		
Boscalid	2.51	ppm	1.88	< LOQ	133	41-141		
Carbaryl	1.88	ppm	1.88	< LOQ	100	60-125		
Carbofuran	2.00	ppm	1.88	< LOQ	107	57-136		
Chlorantraniliprole	2.74	ppm	1.88	< LOQ	145	32-145		
Chlorfenapyr	4.17	ppm	1.88	< LOQ	222	29-150		
Chlorpyrifos	2.91	ppm	1.88	< LOQ	155	29-146		
Clofentezine	1.89	ppm	1.88	< LOQ	101	48-128		
Cyfluthrin	3.17	ppm	1.88	< LOQ	169	16-150		



Brian Weigel
Lab Director

These results relate only to the sample included on this report. The report may not be reproduced except in full, without the written permission of SC Laboratories. Samples tested in accordance with Oregon Administrative Rules, TNI 2009 Standard and SC Laboratories quality assurance plan unless otherwise noted.

Quality Control

Pesticide Analysis (Continued)

Batch: B190228 - Pesticide Prep (Continued)

Matrix Spike(B190228-MS1)			Extracted - 02/12/19 9:18 Analyzed - 02/12/19 18:49					
Analyte	Result	Units	Spike Level	Source Result	%REC	%REC Limits	RPD	RPD Limit
Cypermethrin	3.10	ppm	1.88	< LOQ	165	22-150		
Daminozide	2.96	ppm	1.88	< LOQ	157	34-150		
DDVP (Dichlorvos)	1.94	ppm	1.88	< LOQ	103	55-133		
Diazinon	1.95	ppm	1.88	< LOQ	104	54-126		
Dimethoate	2.00	ppm	1.88	< LOQ	106	60-129		
Ethoprophos	2.53	ppm	1.88	< LOQ	134	40-150		
Etofenprox	1.92	ppm	1.88	< LOQ	102	25-135		
Etoxazole	2.54	ppm	1.88	< LOQ	135	26-149		
Fenoxycarb	2.60	ppm	1.88	< LOQ	138	37-145		
Fenpyroximate	3.19	ppm	1.88	< LOQ	170	27-150		
Fipronil	2.27	ppm	1.88	< LOQ	121	27-150		
Flonicamid	3.75	ppm	1.88	< LOQ	199	46-139		
Fludioxonil	37.2	ppm	1.88	< LOQ	1980	31-150		
Hexythiazox	3.30	ppm	1.88	< LOQ	176	32-150		
Imazalil	2.06	ppm	1.88	< LOQ	109	44-142		
Imidacloprid	2.81	ppm	1.88	< LOQ	149	23-150		
Kresoxim-methyl	1.80	ppm	1.88	< LOQ	95.7	49-130		
Malathion	2.80	ppm	1.88	< LOQ	149	25-150		
Metalaxyl	2.42	ppm	1.88	< LOQ	129	49-141		
Methiocarb	2.61	ppm	1.88	< LOQ	139	44-146		
Methomyl	3.40	ppm	1.88	< LOQ	181	44-136		
Methyl parathion	3.28	ppm	1.88	< LOQ	175	15-150		
MGK-264	1.53	ppm	1.19	< LOQ	129	22-150		
Myclobutanil	2.72	ppm	1.88	< LOQ	145	34-150		
Naled	1.96	ppm	1.88	< LOQ	104	38-142		
Oxamyl	3.86	ppm	1.88	< LOQ	205	40-132		
Paclobutrazol	2.74	ppm	1.88	< LOQ	146	29-147		
Permethrins (total)	1.94	ppm		< LOQ		27-104		
Phosmet	2.62	ppm	1.88	< LOQ	140	35-150		
Piperonyl butoxide	2.82	ppm	1.88	0.12	143	34-143		
Prallethrin	3.03	ppm	1.88	< LOQ	161	33-150		
Propiconazole	2.04	ppm	1.88	< LOQ	108	46-138		
Propoxur	1.92	ppm	1.88	< LOQ	102	50-138		
Pyrethrins (total)	2.37	ppm		< LOQ		21-150		
Pyridaben	2.12	ppm	1.88	< LOQ	113	39-150		



Brian Weigel
Lab Director

These results relate only to the sample included on this report. The report may not be reproduced except in full, without the written permission of SC Laboratories. Samples tested in accordance with Oregon Administrative Rules, TNI 2009 Standard and SC Laboratories quality assurance plan unless otherwise noted.

Quality Control

Pesticide Analysis (Continued)

Batch: B190228 - Pesticide Prep (Continued)

Matrix Spike(B190228-MS1)			Extracted - 02/12/19 9:18 Analyzed - 02/12/19 18:49					
Analyte	Result	Units	Spike Level	Source Result	%REC	%REC Limits	RPD	RPD Limit
Spinosad	1.59	ppm	1.54	< LOQ	103	31-150		
Spiromesifen	2.73	ppm	1.88	< LOQ	145	27-141		
Spirotetramat	2.59	ppm	1.88	< LOQ	138	31-141		
Spiroxamine	1.73	ppm	1.03	< LOQ	167	57-139		
Tebuconazole	1.87	ppm	1.88	< LOQ	99.6	32-140		
Thiacloprid	1.84	ppm	1.88	< LOQ	97.7	45-150		
Thiamethoxam	3.99	ppm	1.88	< LOQ	212	40-141		
Trifloxystrobin	1.73	ppm	1.88	< LOQ	91.9	30-137		

Matrix Spike Dup(B190228-MSD1)			Extracted - 02/12/19 9:18 Analyzed - 02/12/19					
Analyte	Result	Units	Spike Level	Source Result	%REC	%REC Limits	RPD	RPD Limit
Abamectin	5.43	ppm	1.71	< LOQ	318	15-150	5.04	40
Acephate	1.73	ppm	1.74	< LOQ	99.1	45-130	43.1	26
Acequinocyl	1.96	ppm	1.74	< LOQ	113	31-146	11.6	50
Acetamiprid	2.45	ppm	1.74	< LOQ	141	39-150	38.6	21
Aldicarb	1.78	ppm	1.74	< LOQ	102	47-143	4.35	30
Azoxystrobin	2.18	ppm	1.74	< LOQ	125	21-150	5.95	21
Bifenazate	2.80	ppm	1.74	< LOQ	160	31-150	4.06	20
Bifenthrin	1.28	ppm	1.74	< LOQ	73.7	23-132	3.71	30
Boscalid	2.39	ppm	1.74	< LOQ	137	41-141	2.88	20
Carbaryl	1.84	ppm	1.74	< LOQ	105	60-125	5.21	20
Carbofuran	1.77	ppm	1.74	< LOQ	102	57-136	4.83	24
Chlorantraniliprole	2.70	ppm	1.74	< LOQ	155	32-145	6.28	20
Chlorfenapyr	3.67	ppm	1.74	< LOQ	211	29-150	5.02	50
Chlorpyrifos	2.71	ppm	1.74	< LOQ	156	29-146	0.638	24
Clofentezine	1.78	ppm	1.74	< LOQ	102	48-128	1.81	20
Cyfluthrin	3.09	ppm	1.74	< LOQ	178	16-150	5.10	50
Cypermethrin	2.81	ppm	1.74	< LOQ	162	22-150	2.04	30
Daminozide	1.77	ppm	1.74	< LOQ	102	34-150	42.8	30
DDVP (Dichlorvos)	1.74	ppm	1.74	< LOQ	100	55-133	3.30	30
Diazinon	1.85	ppm	1.74	< LOQ	106	54-126	2.17	20
Dimethoate	1.86	ppm	1.74	< LOQ	107	60-129	0.461	20
Ethoprophos	2.30	ppm	1.74	< LOQ	132	40-150	1.62	29
Etofenprox	1.73	ppm	1.74	< LOQ	99.5	25-135	2.81	24
Etoxazole	2.38	ppm	1.74	< LOQ	137	26-149	1.35	30



Brian Weigel
Lab Director

These results relate only to the sample included on this report. The report may not be reproduced except in full, without the written permission of SC Laboratories. Samples tested in accordance with Oregon Administrative Rules, TNI 2009 Standard and SC Laboratories quality assurance plan unless otherwise noted.

Quality Control

Pesticide Analysis (Continued)

Batch: B190228 - Pesticide Prep (Continued)

Matrix Spike Dup(B190228-MSD1)			Extracted - 02/12/19 9:18 Analyzed - 02/12/19					
Analyte	Result	Units	Spike Level	Source Result	%REC	%REC Limits	RPD	RPD Limit
Fenoxycarb	2.61	ppm	1.74	< LOQ	150	37-145	7.85	23
Fenpyroximate	2.99	ppm	1.74	< LOQ	171	27-150	0.949	20
Fipronil	2.10	ppm	1.74	< LOQ	121	27-150	0.102	28
Flonicamid	2.25	ppm	1.74	< LOQ	129	46-139	42.8	29
Fludioxonil	36.2	ppm	1.74	< LOQ	2080	31-150	4.95	30
Hexythiazox	3.12	ppm	1.74	< LOQ	179	32-150	1.82	28
Imazalil	1.96	ppm	1.74	< LOQ	112	44-142	2.67	25
Imidacloprid	2.86	ppm	1.74	< LOQ	164	23-150	9.54	30
Kresoxim-methyl	1.74	ppm	1.74	< LOQ	99.9	49-130	4.31	20
Malathion	2.67	ppm	1.74	< LOQ	153	25-150	2.58	21
Metalaxyl	2.39	ppm	1.74	< LOQ	137	49-141	6.52	20
Methiocarb	2.47	ppm	1.74	< LOQ	142	44-146	2.07	20
Methomyl	2.07	ppm	1.74	< LOQ	119	44-136	41.5	30
Methyl parathion	3.10	ppm	1.74	< LOQ	178	15-150	1.99	50
MGK-264	1.40	ppm	1.10	< LOQ	127	22-150	1.54	24
Myclobutanil	2.66	ppm	1.74	< LOQ	153	34-150	5.48	23
Naled	1.97	ppm	1.74	< LOQ	113	38-142	8.23	25
Oxamyl	2.32	ppm	1.74	< LOQ	133	40-132	42.7	30
Paclobutrazol	2.65	ppm	1.74	< LOQ	152	29-147	4.21	20
Permethrins (total)	1.81	ppm		< LOQ		27-104		30
Phosmet	2.63	ppm	1.74	< LOQ	151	35-150	7.67	20
Piperonyl butoxide	2.63	ppm	1.74	0.12	144	34-143	0.397	21
Prallethrin	2.81	ppm	1.74	< LOQ	161	33-150	0.0512	25
Propiconazole	1.96	ppm	1.74	< LOQ	112	46-138	3.49	20
Propoxur	1.71	ppm	1.74	< LOQ	97.9	50-138	4.29	28
Pyrethrins (total)	2.24	ppm		< LOQ		21-150		28
Pyridaben	1.95	ppm	1.74	< LOQ	112	39-150	0.518	23
Spinosad	1.48	ppm	1.43	< LOQ	104	31-150	0.554	30
Spiromesifen	2.54	ppm	1.74	< LOQ	146	27-141	0.560	30
Spirotetramat	2.39	ppm	1.74	< LOQ	137	31-141	0.425	25
Spiroxamine	1.72	ppm	0.959	< LOQ	179	57-139	6.91	20
Tebuconazole	1.80	ppm	1.74	< LOQ	103	32-140	3.73	20
Thiacloprid	2.33	ppm	1.74	< LOQ	134	45-150	31.0	21
Thiamethoxam	2.36	ppm	1.74	< LOQ	136	40-141	44.0	30
Trifloxystrobin	1.54	ppm	1.74	< LOQ	88.6	30-137	3.64	29



Brian Weigel
Lab Director

These results relate only to the sample included on this report. The report may not be reproduced except in full, without the written permission of SC Laboratories. Samples tested in accordance with Oregon Administrative Rules, TNI 2009 Standard and SC Laboratories quality assurance plan unless otherwise noted.

Quality Control Terpene Analysis

Batch: B190227 - Potency/Terpenes

Blank(B190227-BLK1)			Extracted - 02/12/19 9:14 Analyzed - 02/12/19 14:37					
Analyte	Result	Units	Spike Level	Source Result	%REC	%REC Limits	RPD	RPD Limit
alpha Pinene	< LOQ	%						
Myrcene	< LOQ	%						
alpha Phellandrene	< LOQ	%						
3-Carene	< LOQ	%						
alpha Terpinene	< LOQ	%						
Limonene	< LOQ	%						
Terpinolene	< LOQ	%						
Linalool	< LOQ	%						
Fenchol	< LOQ	%						
Borneol	< LOQ	%						
Terpineol	< LOQ	%						
Geraniol	< LOQ	%						
alpha Humulene	< LOQ	%						
beta Caryophyllene	< LOQ	%						
Caryophyllene Oxide	< LOQ	%						
alpha Bisabolol	< LOQ	%						
Camphene	< LOQ	%						
beta Pinene	< LOQ	%						
Ocimene	< LOQ	%						
Sabinene	< LOQ	%						
Camphor	< LOQ	%						
Isoborneol	< LOQ	%						
Menthol	< LOQ	%						
alpha Cedrene	< LOQ	%						
Nerolidol	< LOQ	%						
R-(+)-Pulegone	< LOQ	%						
Eucalyptol	< LOQ	%						
p-Cymene	< LOQ	%						
(-)-Isopulegol	< LOQ	%						
Geranyl Acetate	< LOQ	%						
Guaiol	< LOQ	%						
Valencene	< LOQ	%						
Phytol	0.326	%						
Citronellol	< LOQ	%						
gamma-Terpinene	< LOQ	%						



Brian Weigel
Lab Director

These results relate only to the sample included on this report. The report may not be reproduced except in full, without the written permission of SC Laboratories. Samples tested in accordance with Oregon Administrative Rules, TNI 2009 Standard and SC Laboratories quality assurance plan unless otherwise noted.

Quality Control

Terpene Analysis (Continued)

Batch: B190227 - Potency/Terpenes (Continued)

Duplicate(B190227-DUP1)		Extracted - 02/12/19 9:14 Analyzed - 02/12/19 14:37						
Analyte	Result	Units	Spike Level	Source Result	%REC	%REC Limits	RPD	RPD Limit
alpha Ocimene	< LOQ	%		< LOQ				20
alpha Terpineol	0.020	%		0.023			12.7	20
beta Ocimene	0.114	%		0.120			5.29	20
beta Terpineol	< LOQ	%		< LOQ				20
cis-Nerolidol	< LOQ	%		< LOQ				20
Phytol 1	0.021	%		0.036			50.8	20
Phytol 2	0.028	%		0.042			40.9	20
trans-Nerolidol	< LOQ	%		< LOQ				20
alpha Pinene	0.214	%		0.226			5.40	20
Myrcene	0.954	%		1.002			4.95	20
alpha Phellandrene	< LOQ	%		< LOQ				20
3-Carene	< LOQ	%		< LOQ				20
alpha Terpinene	< LOQ	%		< LOQ				20
Limonene	0.122	%		0.127			4.26	20
Terpinolene	< LOQ	%		< LOQ				20
Linalool	0.082	%		0.087			5.46	20
Fenchol	< LOQ	%		< LOQ				20
Borneol	< LOQ	%		< LOQ				20
Terpineol	0.020	%		0.023			12.7	20
Geraniol	< LOQ	%		< LOQ				20
alpha Humulene	0.033	%		0.035			7.26	20
beta Caryophyllene	0.102	%		0.104			2.66	20
Caryophyllene Oxide	< LOQ	%		< LOQ				20
alpha Bisabolol	< LOQ	%		0.031				20
Camphene	< LOQ	%		< LOQ				20
beta Pinene	0.086	%		0.091			4.94	20
Ocimene	0.114	%		0.120			5.29	20
Sabinene	< LOQ	%		< LOQ				20
Camphor	< LOQ	%		< LOQ				20
Isoborneol	< LOQ	%		< LOQ				20
Menthol	< LOQ	%		< LOQ				20
alpha Cedrene	< LOQ	%		< LOQ				20
Nerolidol	< LOQ	%		< LOQ				20
R-(+)-Pulegone	< LOQ	%		< LOQ				20
Eucalyptol	< LOQ	%		< LOQ				20



Brian Weigel
Lab Director

These results relate only to the sample included on this report. The report may not be reproduced except in full, without the written permission of SC Laboratories. Samples tested in accordance with Oregon Administrative Rules, TNI 2009 Standard and SC Laboratories quality assurance plan unless otherwise noted.

Quality Control

Terpene Analysis (Continued)

Batch: B190227 - Potency/Terpenes (Continued)

Duplicate(B190227-DUP1)			Extracted - 02/12/19 9:14 Analyzed - 02/12/19 14:37					
Analyte	Result	Units	Spike Level	Source Result	%REC	%REC Limits	RPD	RPD Limit
p-Cymene	< LOQ	%		< LOQ				20
(-)-Isopulegol	< LOQ	%		< LOQ				20
Geranyl Acetate	< LOQ	%		< LOQ				20
Guaiol	0.058	%		0.060			3.87	20
Valencene	0.022	%		0.022			2.29	20
Phytol	0.049	%		0.078			45.3	20
Citronellol	0.020	%		0.023			12.6	20
gamma-Terpinene	< LOQ	%		< LOQ				20

Batch: B190229 - Gravimetric

Duplicate(B190229-DUP1)			Extracted - 02/12/19 13:16 Analyzed - 02/12/19 13:16					
Analyte	Result	Units	Spike Level	Source Result	%REC	%REC Limits	RPD	RPD Limit
Percent Moisture	14.3	%		14.6			2.03	20

Batch: B190230 - Water Activity

Duplicate(B190230-DUP1)			Extracted - 02/12/19 15:51 Analyzed - 02/12/19 15:51					
Analyte	Result	Units	Spike Level	Source Result	%REC	%REC Limits	RPD	RPD Limit
Water Activity	0.526	AW		0.528			0.512	20



Brian Weigel
Lab Director

These results relate only to the sample included on this report. The report may not be reproduced except in full, without the written permission of SC Laboratories. Samples tested in accordance with Oregon Administrative Rules, TNI 2009 Standard and SC Laboratories quality assurance plan unless otherwise noted.

Client: Western Oregon Botanicals Client License: 02010021071d94 Date Sampled: 2/7/2019 Thermometer ID: T014
 Address Where Sampled: 18270 SW Benton Rd Sherwood OR Requestor: Abdullah Naimi Event ID: 19B0022 Balance ID: SAMP_BAL_02
 Sampling SOP & Rev. #: SC-OR-SAMP-003 Sampler: Scott Forster Transporter: Scott Forster Hygrometer ID: Anemometer_02
 Lab ORELAP ID: 4133
 Lab OLCC ID: 1004748743D

Sampler Signature



Weight used (g)	Weight Set ID	Acceptance Criteria	Initial Measured	Initial P/F	Final Measured	Final P/F
0.5	SAMP_CAL_02	±2.5%	0.5	P	0.5	P
200		±2.5%	199.98		199.98	

Container Type	METRC Harvest/Processing Lot ID #:				Product Type	Client Sample Name	Product Date	Batch Size (g)
storage tubs	1414				Usable Marijuana	9 lb Hammer	1/24/2019	1239
METRC Batch ID	Product Temp (°C)	Humidity (%)	# of Containers	Sampling Media	# Zones	# of Inc.	1° Sample Size (g)	Sample Name
	14.1	38.9	1	mylar bag	4	7	1	9 lb Hammer Primary
Lab Sample ID	Container ID		Increment Zone	Sampling Media Wt. (g)	Wt. Inc+Media (g)	Increment Weight (g)	Sample METRC ID#	
19B0022-01	9 lb Hammer-1		A1	0	1	1	1419	
19B0022-01	9 lb Hammer-1		A1	1	2	1	1419	
19B0022-01	9 lb Hammer-1		A2	2	3	1	1419	
19B0022-01	9 lb Hammer-1		A2	3	4	1	1419	
19B0022-01	9 lb Hammer-1		A2	4	5	1	1419	
19B0022-01	9 lb Hammer-1		A3	5	6	1	1419	
19B0022-01	9 lb Hammer-1		A4	6	7.04	1.04	1419	
Totals: Minimum Sample Size = 7g (Usable Marijuana Only) 7 Total Sample Mass = 7.04								
Observations and Abnormalities:		Batch #	Equipment	Cont. Types/Sizes	Uniform	Plant Colors	Shape and Size	Sampling Plan ID & Rev. Date

Container Type	METRC Harvest/Processing Lot ID #:				Product Type	Client Sample Name	Product Date	Batch Size (g)
storage tubs	1415				Usable Marijuana	Mango	1/24/2019	5416
METRC Batch ID	Product Temp (°C)	Humidity (%)	# of Containers	Sampling Media	# Zones	# of Inc.	1° Sample Size (g)	Sample Name
	14.1	38.9	1	mylar bag	4	9	3.2	Mango Primary
Lab Sample ID	Container ID		Increment Zone	Sampling Media Wt. (g)	Wt. Inc+Media (g)	Increment Weight (g)	Sample METRC ID#	
19B0022-02	Mango-1		A1	0	3.2	3.2	1420	
19B0022-02	Mango-1		A2	3.2	6.4	3.2	1420	
19B0022-02	Mango-1		A3	6.4	9.6	3.2	1420	
19B0022-02	Mango-1		A3	9.6	12.8	3.2	1420	
19B0022-02	Mango-1		A3	12.8	16	3.2	1420	
19B0022-02	Mango-1		A3	16	19.2	3.2	1420	
19B0022-02	Mango-1		A4	19.2	22.4	3.2	1420	
19B0022-02	Mango-1		A4	22.4	25.6	3.2	1420	

Lab Sample ID	Container ID	Increment Zone	Sampling Media Wt. (g)	Wt. Inc+Media (g)	Increment Weight (g)	Sample METRC ID#		
19B0022-04	Death Star-1	A1	0	1.5	1.5	1422		
19B0022-04	Death Star-1	A2	1.5	3	1.5	1422		
19B0022-04	Death Star-1	A2	3	4.5	1.5	1422		
19B0022-04	Death Star-1	A2	4.5	6	1.5	1422		
19B0022-04	Death Star-1	A2	6	7.5	1.5	1422		
19B0022-04	Death Star-1	A3	7.5	9	1.5	1422		
19B0022-04	Death Star-1	A3	9	10.36	1.36	1422		
Totals:		Minimum Sample Size = 9.1g (Usable Marijuana Only)		7	Total Sample Mass = 10.36			
Observations and Abnormalities:		Batch #	Equipment	Cont. Types/Sizes	Uniform	Plant Colors	Shape and Size	Sampling Plan ID & Rev. Date

Container Type	METRC Harvest/Processing Lot ID #:				Product Type	Client Sample Name	Product Date	Batch Size (g)
storage tubs	1418				Usable Marijuana	Sirius Black	1/24/2019	1932
METRC Batch ID	Product Temp (°C)	Humidity (%)	# of Containers	Sampling Media	# Zones	# of Inc.	1" Sample Size (g)	Sample Name
	14.1	38.9	1	mylar bag	4	8	1.6	Sirius Black Primary
Lab Sample ID	Container ID	Increment Zone	Sampling Media Wt. (g)	Wt. Inc+Media (g)	Increment Weight (g)	Sample METRC ID#		
19B0022-05	Sirius Black-1	A2	0	1.6	1.6	1423		
19B0022-05	Sirius Black-1	A2	1.6	3.2	1.6	1423		
19B0022-05	Sirius Black-1	A3	3.2	4.8	1.6	1423		
19B0022-05	Sirius Black-1	A3	4.8	6.4	1.6	1423		
19B0022-05	Sirius Black-1	A4	6.4	8	1.6	1423		
19B0022-05	Sirius Black-1	A4	8	9.6	1.6	1423		
19B0022-05	Sirius Black-1	A4	9.6	11.2	1.6	1423		
19B0022-05	Sirius Black-1	A4	11.2	12.8	1.6	1423		
Totals:		Minimum Sample Size = 11.3g (Usable Marijuana Only)		8	Total Sample Mass = 12.8			
Observations and Abnormalities:		Batch #	Equipment	Cont. Types/Sizes	Uniform	Plant Colors	Shape and Size	Sampling Plan ID & Rev. Date

Observations and Abnormalities:

--	--	--	--	--	--	--	--

--



**OREGON LIQUOR CONTROL COMMISSION
CANNABIS TRANSPORTATION MANIFEST**



19B0022

All sales transactions are to be completed prior to transportation of any CANNABIS. The receiving entity may reject product delivered, but amount delivered must be limited to amount agreed upon in prior sales transaction.

Manifest No.:	0001297429	Date Created:	2/7/2019 10:12 AM
Originating Entity:	Western Oregon Botanicals	For OLCC Use Only	
Originating License Number:	020-10021071D94		
Address of Originating Entity:	18270 SW Belton Road Sherwood, OR 97140		
Phone No. of Originating Entity:	208-989-3449		
Contact Phone No. for Inquiries: 208-989-3449			
Destination # 1	SC Laboratories	Destination Phone No.:	707-339-0050
Destination License Number:	010-1004748743D	Date and Approx. Time of Departure:	2/7/2019 10:15 AM
Address of Destination:	15865 SW 74th Avenue Ste 110 Tigard, OR 97224	Date and Approx. Time of Arrival:	2/7/2019 6:00 PM
		Date/Time Received:	2/7/2019 6:24
		Notes: details for extenuating circumstances (e.g., road closure, flat tire, etc.)	
Route to be Traveled: See google maps			
Name of Person Transporting:	Scott Forster	Handler Permit No. of Driver:	N/A
State Driver's License No.:	a625521	Signature of Person Transporting:	<i>[Signature]</i>
Make, Model, License Plate No.:	Nissan NV200 825KAT		
Package # 1	Production Batch No.	Item Name	Quantity
1A40103000098BF000001419 Lab Test: SubmittedForTesting Status: Shipped		9lb Hammer (Buds (by strain))	Shp: 7.0400 g
Harvests:	9lb 1/24		
Package # 2	Production Batch No.	Item Name	Quantity
1A40103000098BF000001420 Lab Test: SubmittedForTesting Status: Shipped		Mango (Buds (by strain))	Shp: 28.8600 g
Harvests:	mango1/24		
Package # 3	Production Batch No.	Item Name	Quantity
1A40103000098BF000001421 Lab Test: SubmittedForTesting Status: Shipped		Super Glue (Buds (by strain))	Shp: 16.9800 g
Harvests:	Super Glue 1/24		
Package # 4	Production Batch No.	Item Name	Quantity
1A40103000098BF000001422 Lab Test: SubmittedForTesting Status: Shipped		Death Star (Buds (by strain))	Shp: 10.6000 g
Harvests:	Death Star		
Package # 5	Production Batch No.	Item Name	Quantity
1A40103000098BF000001423 Lab Test: SubmittedForTesting Status: Shipped		Sirius Black (Buds (by strain))	Shp: 12.8700 g
Harvests:	sirius black		



**OREGON LIQUOR CONTROL COMMISSION
CANNABIS TRANSPORTATION MANIFEST**



19B0022

All sales transactions are to be completed prior to transportation of any CANNABIS. The receiving entity may reject product delivered, but amount delivered must be limited to amount agreed upon in prior sales transaction.

Manifest No.:	0001297429	Date Created:	2/7/2019 10:12 AM
PRODUCT REJECTION (if only a portion of shipment is rejected, circle that portion above)			
Name of Person Receiving or Rejecting Product:	Scott F.		
I confirm that the contents of this shipment match weight records entered above, and I agree to take custody of those portions of this shipment <i>not</i> circled above. Those portions circled were returned to the individual delivering this shipment.			
Signature:	Scott F.	Date:	2/7
Signature of individual taking receipt of rejected portion of this shipment:			

CHAIN OF CUSTODY



SC Laboratories Oregon LLC
 15865 SW 74th Avenue, Ste 110
 Tigard OR, 97224
 (503) 272-8830
 ORELAP ID # 4133
www.scilabs.com

Client	Western Oregon Botanicals	COC #	1/1	19B0022	Sample Type Legend U - Usable Marijuana C - Concentrate P - Product O - Other
Address Where Sampled	18270 SW Benton Rd Sherwood OR	Work Order #	19B0022		
Date Sampled	2/7/2019	Received By	Scott Forster		
OLCC License #	02010021071d84	Received Date	2/7		
OLCC License Type	Grower	Courier	Scott Forster		
Email	bdulianamini@yahoo.co	Name of Sampler	Scott Forster		
Phone	208.989.3449	Transfer Manifest #	1297429		
Sampler OLCC License #	010-1004748743D	Place where Sampled	18270 SW Benton Rd Sherwood OR		

Sample Name	Time	METREC Label	Unique Batch Number	SC Labs LIMS ID	Sample Type	Total Sample Mass	# of Increments	TESTS REQUESTED					Sample Specific Notes
								Polency	Water Activity	Moisture Content	Pesticide	Residual Solvent	
9 lb Hammer Primary	9:35	1419	9 lb Hammer	19B0022-01	U	7.04	7	X	X	X	X		
Mango Primary	9:44	1420	Mango	19B0022-02	U	28.86	9	X	X	X	X		
Super Glue Primary	9:53	1421	Super Glue	19B0022-03	U	16.98	8	X	X	X	X		
Death Star Primary	10:02	1422	Death Star	19B0022-04	U	10.36	7	X	X	X	X		
Sirius Black Primary	10:11	1423	Sirius Black	19B0022-05	U	12.8	8	X	X	X	X		

Notes/Special Considerations: Opt OUT of Sample Duplicate Yes No

Samples Relinquished Print Name: <u>Ryan L. Hardy</u> Date: <u>2-7-19</u> Representative of: <u>W. Oregon Botanicals</u> Signature: <u>[Signature]</u> Time: <u>1015</u>	Samples Received Print Name: <u>Scott Forster</u> Date: <u>2/7/19</u> Representative of: <u>SC Labs</u> Signature: <u>[Signature]</u> Time: <u>1015</u>	Samples Relinquished Print Name: _____ Date: _____ Representative of: _____ Signature: _____ Time: _____	Samples Received Print Name: _____ Date: _____ Representative of: _____ Signature: _____ Time: _____
---	--	---	---