

Sample Name: **Alien Jack**  
Tested for: **Western Oregon Botanicals  
Compliance - Usable**

Laboratory ID: 19D0123-02

Matrix: Useable Marijuana

Sample Metrc ID: 1A40103000098BF000001625

Strain: Alien Jack

Lot # 3/22 Alien Jack

License: 020-10021071D94

Batch RFID: 1A40103000098BF000001620

Date Sampled: 04/24/19 10:15

Batch Size: 1589 (g)

Date Accepted: 04/24/19



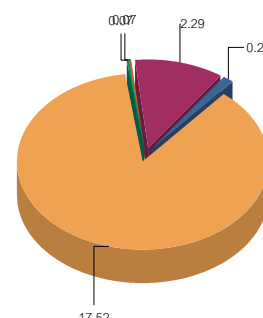
### Potency Analysis

Date Extracted: 04/25/19

Analysis Method/SOP: Potency

Date Analyzed: 04/25/19

\* - ORELAP certified analyte

Cannabinoids	% weight	mg/g	LOQ (%)	Cannabinoids Profile												
<b>Total THC</b> ((THCA*0.877)+d9)	15.63	156.3	0.03	 <table border="1"> <tr><td>THC</td><td>0.27</td></tr> <tr><td>THCA</td><td>17.52</td></tr> <tr><td>CBDA</td><td>0.07</td></tr> <tr><td>CBG</td><td>0.07</td></tr> <tr><td>CBGA</td><td>2.29</td></tr> <tr><td>Total</td><td>20.22</td></tr> </table>	THC	0.27	THCA	17.52	CBDA	0.07	CBG	0.07	CBGA	2.29	Total	20.22
THC	0.27															
THCA	17.52															
CBDA	0.07															
CBG	0.07															
CBGA	2.29															
Total	20.22															
<b>Total CBD</b> ((CBDA*0.877)+CBD)	0.06	0.6	0.03													
d9-THC (d9-Tetrahydrocannabinol)*	0.27	2.7	0.04													
d8-THC (d8-Tetrahydrocannabinol)*	< LOQ	< LOQ	0.04													
THCA (d9-Tetrahydrocannabinolic Acid)*	17.52	175.2	0.06													
CBD (Cannabidiol)*	< LOQ	< LOQ	0.03													
CBDA (Cannabidiolic Acid)*	0.07	0.7	0.06													
CBN (Cannabinol)*	< LOQ	< LOQ	0.03													
CBG (Cannabigerol)*	0.07	0.7	0.04													
CBGA (Cannabigerolic Acid)	2.29	22.9	0.04													
CBDV (Cannabidivarin)*	< LOQ	< LOQ	0.04													
CBDVA (Cannabidivarinic Acid)	< LOQ	< LOQ	0.04													
CBC (Cannabichromene)*	< LOQ	< LOQ	0.04													
THCV (Tetrahydrocannabivarin)	< LOQ	< LOQ	0.04													
<b>Total Cannabinoids</b>	20.22	202.2	0.03													

### Water Activity and Moisture

Analyte	Result	Limit	Units	LOQ	Analyzed	Method
Water Activity	0.465	0.65	AW	0.0300	04/26/2019	Water Activity
Percent Moisture	10.1	15	%	0.10	04/26/2019	Moisture

Cannabinoids reported as dry weight (moisture corrected)

Results above the action level are highlighted in red #.

<LOQ - Results below the Limit of Quantitation - Compound not detected



Brian Weigel  
Lab Director

These results relate only to the sample included on this report. The report may not be reproduced except in full, without the written permission of SC Laboratories. Samples tested in accordance with Oregon Administrative Rules, TNI 2009 Standard and SC Laboratories quality assurance plan unless otherwise noted.

Sample Name: <b>Alien Jack</b>	License: <b>020-10021071D94</b>
Tested for: <b>Western Oregon Botanicals Compliance - Usable</b>	Date Sampled: <b>04/24/19 10:15</b>
Laboratory ID: <b>19D0123-02</b> Strain: <b>Alien Jack</b>	Date Accepted: <b>04/24/19</b>
Matrix: <b>Useable Marijuana</b>	Sample Metrc ID: <b>1A40103000098BF000001625</b>
Lot # <b>3/22 Alien Jack</b>	Batch RFID: <b>1A40103000098BF000001620</b>
	Batch Size: <b>1589 (g)</b>

### Terpene Analysis

Date Extracted: 04/25/19

Analysis Method/SOP: Potency

Date Analyzed: 04/25/19

Analyte	Result (%)	LOQ	Analyte	Result	LOQ
alpha Pinene	0.045	0.018	Myrcene	0.171	0.018
alpha Phellandrene	< LOQ	0.018	3-Carene	< LOQ	0.018
alpha Terpinene	< LOQ	0.018	Limonene	0.103	0.018
Terpinolene	0.218	0.018	Linalool	< LOQ	0.018
Fenchol	< LOQ	0.018	Borneol	< LOQ	0.018
Terpineol	0.022	0.018	Geraniol	0.032	0.018
alpha Humulene	0.031	0.018	beta Caryophyllene	0.068	0.018
Caryophyllene Oxide	0.018	0.018	alpha Bisabolol	< LOQ	0.018
Camphene	< LOQ	0.018	beta Pinene	0.067	0.018
Ocimene	< LOQ	0.018	Sabinene	< LOQ	0.018
Camphor	< LOQ	0.018	Isoborneol	< LOQ	0.018
Menthol	< LOQ	0.018	alpha Cedrene	< LOQ	0.018
Nerolidol	< LOQ	0.018	R-(+)-Pulegone	< LOQ	0.018
Eucalyptol	< LOQ	0.018	p-Cymene	< LOQ	0.018
(-)-Isopulegol	< LOQ	0.018	Geranyl Acetate	< LOQ	0.018
Guaiol	0.034	0.018	Valencene	0.033	0.018
Phytol	0.059	0.018	Citronellol	< LOQ	0.018
gamma-Terpinene	< LOQ	0.018			
			<b>Total Terpenes</b>	<b>0.903 %</b>	

<LOQ - Results below the Limit of Quantitation - Compound not detected

Terpene Analysis is not ORELAP Accredited.

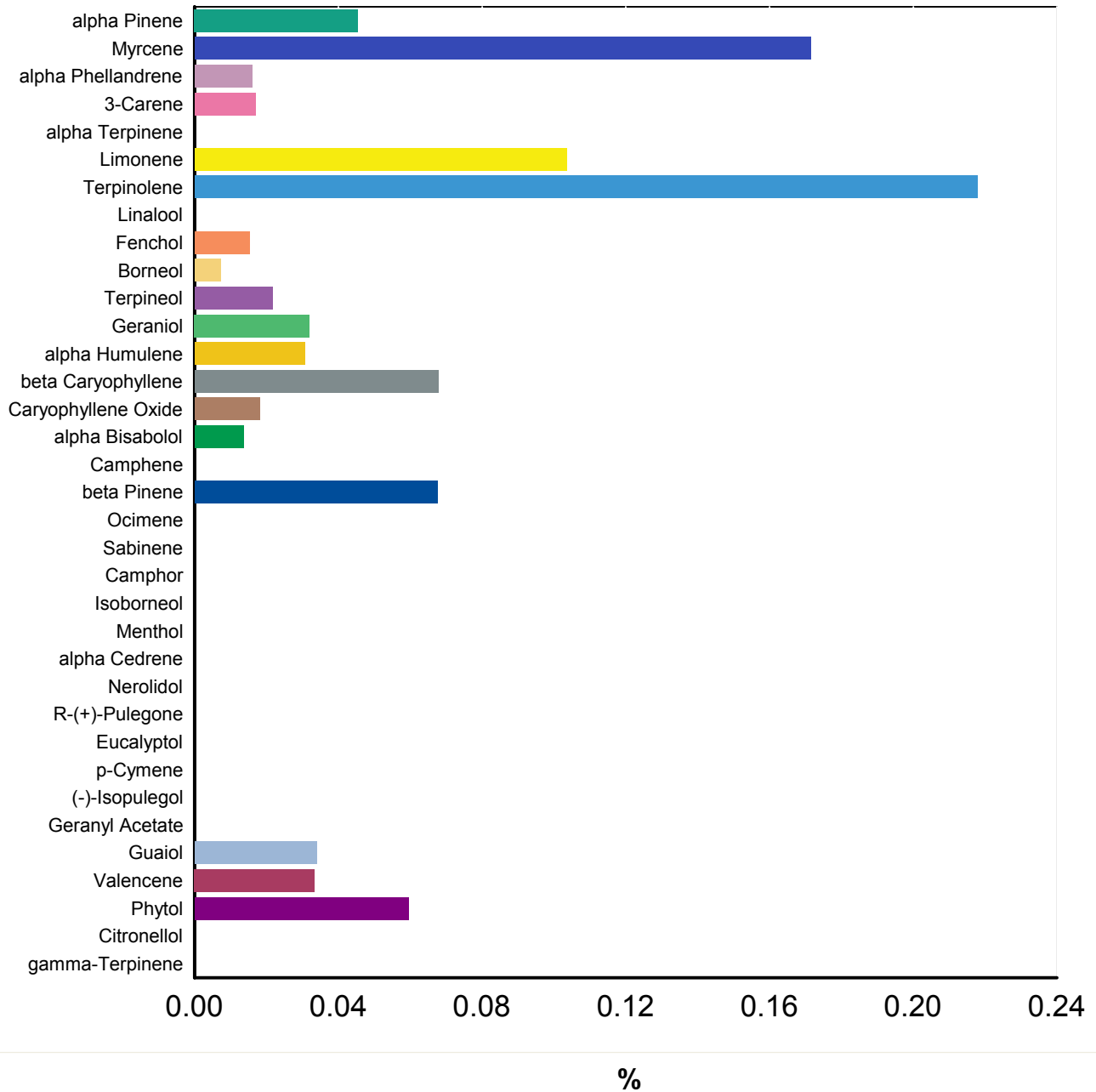


Brian Weigel  
Lab Director

These results relate only to the sample included on this report. The report may not be reproduced except in full, without the written permission of SC Laboratories. Samples tested in accordance with Oregon Administrative Rules, TNI 2009 Standard and SC Laboratories quality assurance plan unless otherwise noted.

Sample Name: <b>Alien Jack</b>	License: <b>020-10021071D94</b>
Tested for: <b>Western Oregon Botanicals</b>	Date Sampled: <b>04/24/19 10:15</b>
<b>Compliance - Usable</b>	Date Accepted: <b>04/24/19 11:38</b>
Laboratory ID: <b>19D0123-02</b> Matrix: <b>Useable Marijuana</b>	Client/Metric ID: <b>1A40103000098BF000001625</b>

**Terpene Profile**



*Brian Weigel*  
Brian Weigel  
Lab Director

These results relate only to the sample included on this report. The report may not be reproduced except in full, without the written permission of SC Laboratories. Samples tested in accordance with Oregon Administrative Rules, TNI 2009 Standard and SC Laboratories quality assurance plan unless otherwise noted.

Sample Name: **Alien Jack** License: **020-10021071D94**  
 Tested for: **Western Oregon Botanicals** Date Sampled: **04/24/19 10:15**  
**Compliance - Usable** Date Accepted: **04/24/19**

Laboratory ID: **19D0123-02** Strain: **Alien Jack** Sample Metrc ID: **1A40103000098BF000001625**  
 Matrix: **Useable Marijuana** Batch RFID: **1A40103000098BF000001620**  
 Lot # **3/22 Alien Jack** Batch Size: **1589 (g)**

## Pesticide Analysis in ppm

Date Extracted: 04/25/19 Analysis Method/SOP: Pesticides  
 Date Analyzed: 04/26/19 Results above the action levels are highlighted in red #.

Analyte	Result	Action Level	LOQ	Analyte	Result	Action Level	LOQ
Abamectin	< LOQ	0.5	0.23	Acephate	< LOQ	0.4	0.18
Acequinocyl	< LOQ	2	0.92	Acetamiprid	< LOQ	0.2	0.09
Aldicarb	< LOQ	0.4	0.18	Azoxystrobin	< LOQ	0.2	0.09
Bifenazate	< LOQ	0.2	0.09	Bifenthrin	< LOQ	0.2	0.09
Boscalid	< LOQ	0.4	0.18	Carbaryl	< LOQ	0.2	0.09
Carbofuran	< LOQ	0.2	0.09	Chlorantraniliprole	< LOQ	0.2	0.09
Chlorfenapyr	< LOQ	1	0.46	Chlorpyrifos	< LOQ	0.2	0.09
Clofentezine	< LOQ	0.2	0.09	Cyfluthrin	< LOQ	1	0.46
Cypermethrin	< LOQ	1	0.46	Daminozide	< LOQ	1	0.46
DDVP (Dichlorvos)	< LOQ	1	0.46	Diazinon	< LOQ	0.2	0.09
Dimethoate	< LOQ	0.2	0.09	Ethoprophos	< LOQ	0.2	0.09
Etofenprox	< LOQ	0.4	0.18	Etoxazole	< LOQ	0.2	0.09
Fenoxycarb	< LOQ	0.2	0.09	Fenpyroximate	< LOQ	0.4	0.18
Fipronil	< LOQ	0.4	0.18	Fonicamid	< LOQ	1	0.46
Fludioxonil	< LOQ	0.4	0.18	Hexythiazox	< LOQ	1	0.46
Imazalil	< LOQ	0.2	0.09	Imidacloprid	< LOQ	0.4	0.18
Kresoxim-methyl	< LOQ	0.4	0.18	Malathion	< LOQ	0.2	0.09
Metalaxyl	< LOQ	0.2	0.09	Methiocarb	< LOQ	0.2	0.09
Methomyl	< LOQ	0.4	0.18	Methyl parathion	< LOQ	0.2	0.09
MGK-264	< LOQ	0.2	0.09	Myclobutanil	< LOQ	0.2	0.09
Naled	< LOQ	0.5	0.23	Oxamyl	< LOQ	1	0.46
Paclobutrazol	< LOQ	0.4	0.18	Permethrins (total)	< LOQ	0.2	0.09
Phosmet	< LOQ	0.2	0.09	Piperonyl butoxide	< LOQ	2	0.46
Prallethrin	< LOQ	0.2	0.09	Propiconazole	< LOQ	0.4	0.18
Propoxur	< LOQ	0.2	0.09	Pyrethrins (total)	< LOQ	1	0.46
Pyridaben	< LOQ	0.2	0.09	Spinosad	< LOQ	0.2	0.09
Spiromesifen	< LOQ	0.2	0.09	Spirotetramat	< LOQ	0.2	0.09
Spiroxamine	< LOQ	0.4	0.18	Tebuconazole	< LOQ	0.4	0.18
Thiacloprid	< LOQ	0.2	0.09	Thiamethoxam	< LOQ	0.2	0.09
Trifloxystrobin	< LOQ	0.2	0.09				

<LOQ - Results below the Limit of Quantitation - Compound not detected



Brian Weigel  
Lab Director

These results relate only to the sample included on this report. The report may not be reproduced except in full, without the written permission of SC Laboratories. Samples tested in accordance with Oregon Administrative Rules, TNI 2009 Standard and SC Laboratories quality assurance plan unless otherwise noted.

## Case Narrative

**Receiving** - Samples 19D0123-01 (1624), 19D0123-02 (1625) and 19D0123-03 (1626) composited for Pesticides, Moisture Content and Water Activity.

**Terpenes** - Phytol result was above QC criteria in the Method Blank.

**Pesticides** - Chlorantraniliprole recovered above the upper acceptance limit in the Blank Spike, Matrix Spike, and Matrix Spike Duplicate. Analyte was below the reporting limit in all client samples.

Fludioxinil recovered below the lower acceptance limit in the Blank Spike, Matrix Spike, and Matrix Spike Duplicate; no peaks were identified in the retention time window of this analyte.

## Quality Control Potency

### Batch: B190700 - Potency/Terpenes

Blank(B190700-BLK1)			Extracted - 04/25/19 11:00 Analyzed - 04/25/19 21:07					
Analyte	Result	Units	Spike Level	Source Result	%REC	%REC Limits	RPD	RPD Limit
d9-THC (d9-Tetrahydrocannabinol)	< LOQ	%						
d8-THC (d8-Tetrahydrocannabinol)	< LOQ	%						
THCA (d9-Tetrahydrocannabinolic Acid)	< LOQ	%						
CBD (Cannabidiol)	< LOQ	%						
CBDA (Cannabidiolic Acid)	< LOQ	%						
CBN (Cannabinol)	< LOQ	%						
CBG (Cannabigerol)	< LOQ	%						
CBGA (Cannabigerolic Acid)	< LOQ	%						
CBDV (Cannabidivarin)	< LOQ	%						
CBDVA (Cannabidivarinic Acid)	< LOQ	%						
CBC (Cannabichromene)	< LOQ	%						
THCV (Tetrahydrocannabivarin)	< LOQ	%						

Duplicate(B190700-DUP1)			Extracted - 04/25/19 11:00 Analyzed - 04/25/19 21:15					
Analyte	Result	Units	Spike Level	Source Result	%REC	%REC Limits	RPD	RPD Limit
d9-THC (d9-Tetrahydrocannabinol)	0.35	%		0.33			4.05	20
d8-THC (d8-Tetrahydrocannabinol)	< LOQ	%		< LOQ				20
CBD (Cannabidiol)	< LOQ	%		< LOQ				20
CBDA (Cannabidiolic Acid)	0.09	%		0.07			22.6	20
CBN (Cannabinol)	< LOQ	%		< LOQ				20
CBG (Cannabigerol)	< LOQ	%		< LOQ				20
CBGA (Cannabigerolic Acid)	0.19	%		0.17			12.5	20
CBDV (Cannabidivarin)	< LOQ	%		< LOQ				20



Brian Weigel  
Lab Director

These results relate only to the sample included on this report. The report may not be reproduced except in full, without the written permission of SC Laboratories. Samples tested in accordance with Oregon Administrative Rules, TNI 2009 Standard and SC Laboratories quality assurance plan unless otherwise noted.

## Quality Control Potency (Continued)

**Batch: B190700 - Potency/Terpenes (Continued)**

Duplicate(B190700-DUP1)			Extracted - 04/25/19 11:00 Analyzed - 04/25/19 21:15					
Analyte	Result	Units	Spike Level	Source Result	%REC	%REC Limits	RPD	RPD Limit
CBDVA (Cannabidivarinic Acid)	0.03	%		0.03			1.07	20
CBC (Cannabichromene)	< LOQ	%		< LOQ				20
THCV (Tetrahydrocannabivarin)	< LOQ	%		< LOQ				20

LCS(B190700-BS1)			Extracted - 04/25/19 11:00 Analyzed - 04/25/19 20:59					
Analyte	Result	Units	Spike Level	Source Result	%REC	%REC Limits	RPD	RPD Limit
d9-THC (d9-Tetrahydrocannabinol)	0.03	%	0.0400		86.9	80-120		
CBD (Cannabidiol)	0.04	%	0.0400		96.2	80-120		
CBDA (Cannabidiolic Acid)	0.05	%	0.0400		115	80-120		
CBN (Cannabinol)	0.04	%	0.0400		105	80-120		



Brian Weigel  
 Lab Director

These results relate only to the sample included on this report. The report may not be reproduced except in full, without the written permission of SC Laboratories. Samples tested in accordance with Oregon Administrative Rules, TNI 2009 Standard and SC Laboratories quality assurance plan unless otherwise noted.

## Quality Control Pesticide Analysis

**Batch: B190702 - Pesticide Prep**

Analyte	Result	Units	Spike Level	Source Result	%REC	%REC Limits	RPD	RPD Limit
<b>Blank(B190702-BLK1)</b>			<b>Extracted - 04/24/19 16:41 Analyzed - 04/25/19 19:20</b>					
Abamectin	< LOQ	ppm						
Acephate	< LOQ	ppm						
Acequinocyl	< LOQ	ppm						
Acetamiprid	< LOQ	ppm						
Aldicarb	< LOQ	ppm						
Azoxystrobin	< LOQ	ppm						
Bifenazate	< LOQ	ppm						
Bifenthrin	< LOQ	ppm						
Boscalid	< LOQ	ppm						
Carbaryl	< LOQ	ppm						
Carbofuran	< LOQ	ppm						
Chlorantraniliprole	< LOQ	ppm						
Chlorfenapyr	< LOQ	ppm						
Chlorpyrifos	< LOQ	ppm						
Clofentezine	< LOQ	ppm						
Cyfluthrin	< LOQ	ppm						
Cypermethrin	< LOQ	ppm						
Daminozide	< LOQ	ppm						
DDVP (Dichlorvos)	< LOQ	ppm						
Diazinon	< LOQ	ppm						
Dimethoate	< LOQ	ppm						
Ethoprophos	< LOQ	ppm						
Etofenprox	< LOQ	ppm						
Etoxazole	< LOQ	ppm						
Fenoxycarb	< LOQ	ppm						
Fenpyroximate	< LOQ	ppm						
Fipronil	< LOQ	ppm						
Fonicamid	< LOQ	ppm						
Fludioxonil	< LOQ	ppm						
Hexythiazox	< LOQ	ppm						
Imazalil	< LOQ	ppm						
Imidacloprid	< LOQ	ppm						
Kresoxim-methyl	< LOQ	ppm						
Malathion	< LOQ	ppm						
Metalaxyl	< LOQ	ppm						



Brian Weigel  
Lab Director

These results relate only to the sample included on this report. The report may not be reproduced except in full, without the written permission of SC Laboratories. Samples tested in accordance with Oregon Administrative Rules, TNI 2009 Standard and SC Laboratories quality assurance plan unless otherwise noted.

## Quality Control

### Pesticide Analysis (Continued)

**Batch: B190702 - Pesticide Prep (Continued)**

Blank(B190702-BLK1)			Extracted - 04/24/19 16:41 Analyzed - 04/25/19 19:20					
Analyte	Result	Units	Spike Level	Source Result	%REC	%REC Limits	RPD	RPD Limit
Methiocarb	< LOQ	ppm						
Methomyl	< LOQ	ppm						
Methyl parathion	< LOQ	ppm						
MGK-264	< LOQ	ppm						
Myclobutanil	< LOQ	ppm						
Naled	< LOQ	ppm						
Oxamyl	< LOQ	ppm						
Paclbutrazol	< LOQ	ppm						
Permethrins (total)	< LOQ	ppm						
Phosmet	< LOQ	ppm						
Piperonyl butoxide	< LOQ	ppm						
Prallethrin	< LOQ	ppm						
Propiconazole	< LOQ	ppm						
Propoxur	< LOQ	ppm						
Pyrethrins (total)	< LOQ	ppm						
Pyridaben	< LOQ	ppm						
Spinosad	< LOQ	ppm						
Spiromesifen	< LOQ	ppm						
Spirotetramat	< LOQ	ppm						
Spiroxamine	< LOQ	ppm						
Tebuconazole	< LOQ	ppm						
Thiacloprid	< LOQ	ppm						
Thiamethoxam	< LOQ	ppm						
Trifloxystrobin	< LOQ	ppm						

LCS(B190702-BS1)			Extracted - 04/24/19 16:41 Analyzed - 04/25/19 19:36					
Analyte	Result	Units	Spike Level	Source Result	%REC	%REC Limits	RPD	RPD Limit
Abamectin	0.88	ppm	0.980		90.2	29-150		
Acephate	1.03	ppm	1.00		103	48-133		
Acequinocyl	0.85	ppm	1.00		85.3	48-150		
Acetamiprid	1.00	ppm	1.00		100	45-150		
Aldicarb	1.02	ppm	1.00		102	58-134		
Azoxystrobin	0.85	ppm	1.00		85.1	25-150		
Bifenazate	0.92	ppm	1.00		92.0	46-141		
Bifenthrin	0.91	ppm	1.00		91.2	55-150		



Brian Weigel  
Lab Director

These results relate only to the sample included on this report. The report may not be reproduced except in full, without the written permission of SC Laboratories. Samples tested in accordance with Oregon Administrative Rules, TNI 2009 Standard and SC Laboratories quality assurance plan unless otherwise noted.



## Quality Control

### Pesticide Analysis (Continued)

**Batch: B190702 - Pesticide Prep (Continued)**

LCS(B190702-BS1)		Extracted - 04/24/19 16:41 Analyzed - 04/25/19 19:36						
Analyte	Result	Units	Spike Level	Source Result	%REC	%REC Limits	RPD	RPD Limit
Boscalid	0.80	ppm	1.00		79.8	34-141		
Carbaryl	1.08	ppm	1.00		108	67-125		
Carbofuran	1.06	ppm	1.00		106	71-128		
Chlorantraniliprole	2.38	ppm	1.00		238	43-138		
Chlorfenapyr	0.92	ppm	1.00		92.4	45-150		
Chlorpyrifos	0.90	ppm	1.00		89.9	36-150		
Clofentezine	1.02	ppm	1.00		102	59-135		
Cyfluthrin	1.08	ppm	1.00		108	33-150		
Cypermethrin	0.94	ppm	1.00		94.1	47-148		
Daminozide	0.67	ppm	1.00		66.6	18-116		
DDVP (Dichlorvos)	0.98	ppm	1.00		97.6	65-150		
Diazinon	1.05	ppm	1.00		105	60-130		
Dimethoate	1.09	ppm	1.00		109	65-131		
Ethoprophos	0.94	ppm	1.00		93.9	52-150		
Etofenprox	0.98	ppm	1.00		97.9	60-139		
Etoxazole	0.97	ppm	1.00		96.9	59-122		
Fenoxycarb	1.02	ppm	1.00		102	39-146		
Fenpyroximate	0.92	ppm	1.00		92.4	44-147		
Fipronil	0.84	ppm	1.00		84.4	40-143		
Flonicamid	0.98	ppm	1.00		97.5	50-142		
Fludioxonil	0.31	ppm	1.00		31.4	49-150		
Hexythiazox	0.88	ppm	1.00		88.1	41-142		
Imazalil	1.02	ppm	1.00		102	61-127		
Imidacloprid	0.95	ppm	1.00		95.4	36-150		
Kresoxim-methyl	1.08	ppm	1.00		108	53-131		
Malathion	0.98	ppm	1.00		98.1	55-134		
Metalaxyl	1.02	ppm	1.00		102	64-127		
Methiocarb	0.98	ppm	1.00		98.0	53-144		
Methomyl	1.08	ppm	1.00		108	47-141		
Methyl parathion	1.04	ppm	1.00		104	48-142		
MGK-264	0.52	ppm	0.630		82.3	38-150		
Myclobutanil	0.97	ppm	1.00		96.5	45-146		
Naled	0.72	ppm	1.00		72.5	28-113		
Oxamyl	1.09	ppm	1.00		109	48-133		
Paclobutrazol	0.96	ppm	1.00		95.8	37-150		



Brian Weigel  
 Lab Director

These results relate only to the sample included on this report. The report may not be reproduced except in full, without the written permission of SC Laboratories. Samples tested in accordance with Oregon Administrative Rules, TNI 2009 Standard and SC Laboratories quality assurance plan unless otherwise noted.

## Quality Control

### Pesticide Analysis (Continued)

**Batch: B190702 - Pesticide Prep (Continued)**

LCS(B190702-BS1)		Extracted - 04/24/19 16:41 Analyzed - 04/25/19 19:36						
Analyte	Result	Units	Spike Level	Source Result	%REC	%REC Limits	RPD	RPD Limit
Permethrins (total)	0.99	ppm				46-150		
Phosmet	0.95	ppm	1.00		94.7	48-137		
Piperonyl butoxide	0.96	ppm	1.00		96.5	43-142		
Prallethrin	0.91	ppm	1.00		90.9	48-144		
Propiconazole	1.05	ppm	1.00		105	52-136		
Propoxur	1.07	ppm	1.00		107	61-131		
Pyrethrins (total)	0.61	ppm				24-150		
Pyridaben	0.96	ppm	1.00		95.7	40-150		
Spinosad	0.89	ppm	0.820		108	42-148		
Spiromesifen	1.03	ppm	1.00		103	38-150		
Spirotetramat	0.86	ppm	1.00		85.8	37-132		
Spiroxamine	0.51	ppm	0.550		92.1	49-136		
Tebuconazole	1.09	ppm	1.00		109	46-142		
Thiacloprid	0.97	ppm	1.00		96.8	48-150		
Thiamethoxam	1.08	ppm	1.00		108	46-138		
Trifloxystrobin	1.02	ppm	1.00		102	44-144		

Matrix Spike(B190702-MS1)		Extracted - 04/25/19 12:42 Analyzed - 04/25/19 19:52						
Analyte	Result	Units	Spike Level	Source Result	%REC	%REC Limits	RPD	RPD Limit
Abamectin	1.92	ppm	1.95	< LOQ	98.7	15-150		
Acephate	1.95	ppm	1.99	< LOQ	97.9	45-130		
Acequinocyl	1.53	ppm	1.99	< LOQ	77.0	31-146		
Acetamiprid	1.99	ppm	1.99	< LOQ	99.9	39-150		
Aldicarb	1.98	ppm	1.99	< LOQ	99.6	47-143		
Azoxystrobin	1.65	ppm	1.99	< LOQ	82.8	21-150		
Bifenazate	1.80	ppm	1.99	< LOQ	90.4	31-150		
Bifenthrin	1.38	ppm	1.99	< LOQ	69.5	23-132		
Boscalid	1.54	ppm	1.99	< LOQ	77.7	41-141		
Carbaryl	2.01	ppm	1.99	< LOQ	101	60-125		
Carbofuran	2.09	ppm	1.99	< LOQ	105	57-136		
Chlorantraniliprole	4.74	ppm	1.99	< LOQ	239	32-145		
Chlorfenapyr	1.76	ppm	1.99	< LOQ	88.8	29-150		
Chlorpyrifos	1.72	ppm	1.99	< LOQ	86.4	29-146		
Clofentezine	1.85	ppm	1.99	< LOQ	93.1	48-128		
Cyfluthrin	1.84	ppm	1.99	< LOQ	92.7	16-150		



Brian Weigel  
Lab Director

These results relate only to the sample included on this report. The report may not be reproduced except in full, without the written permission of SC Laboratories. Samples tested in accordance with Oregon Administrative Rules, TNI 2009 Standard and SC Laboratories quality assurance plan unless otherwise noted.

## Quality Control

### Pesticide Analysis (Continued)

**Batch: B190702 - Pesticide Prep (Continued)**

Matrix Spike(B190702-MS1)			Extracted - 04/25/19 12:42 Analyzed - 04/25/19 19:52					
Analyte	Result	Units	Spike Level	Source Result	%REC	%REC Limits	RPD	RPD Limit
Cypermethrin	1.60	ppm	1.99	< LOQ	80.5	22-150		
Daminozide	2.34	ppm	1.99	< LOQ	118	34-150		
DDVP (Dichlorvos)	1.81	ppm	1.99	< LOQ	91.1	55-133		
Diazinon	2.03	ppm	1.99	< LOQ	102	54-126		
Dimethoate	2.06	ppm	1.99	< LOQ	104	60-129		
Ethoprophos	1.76	ppm	1.99	< LOQ	88.8	40-150		
Etofenprox	1.65	ppm	1.99	< LOQ	83.2	25-135		
Etoxazole	1.81	ppm	1.99	< LOQ	91.3	26-149		
Fenoxycarb	1.99	ppm	1.99	< LOQ	100	37-145		
Fenpyroximate	1.86	ppm	1.99	< LOQ	93.5	27-150		
Fipronil	1.52	ppm	1.99	< LOQ	76.3	27-150		
Flonicamid	1.85	ppm	1.99	< LOQ	93.3	46-139		
Fludioxonil	0.58	ppm	1.99	< LOQ	29.1	31-150		
Hexythiazox	1.79	ppm	1.99	< LOQ	90.0	32-150		
Imazalil	1.99	ppm	1.99	< LOQ	100	44-142		
Imidacloprid	2.02	ppm	1.99	< LOQ	102	23-150		
Kresoxim-methyl	2.12	ppm	1.99	< LOQ	106	49-130		
Malathion	1.95	ppm	1.99	< LOQ	98.2	25-150		
Metalaxyl	1.98	ppm	1.99	< LOQ	99.5	49-141		
Methiocarb	1.89	ppm	1.99	< LOQ	95.1	44-146		
Methomyl	2.05	ppm	1.99	< LOQ	103	44-136		
Methyl parathion	2.10	ppm	1.99	< LOQ	105	15-150		
MGK-264	0.97	ppm	1.25	< LOQ	77.2	22-150		
Myclobutanil	1.89	ppm	1.99	< LOQ	95.3	34-150		
Naled	1.62	ppm	1.99	< LOQ	81.4	38-142		
Oxamyl	2.06	ppm	1.99	< LOQ	104	40-132		
Paclobutrazol	1.79	ppm	1.99	< LOQ	90.2	29-147		
Permethrins (total)	1.45	ppm		< LOQ		27-104		
Phosmet	1.85	ppm	1.99	< LOQ	93.3	35-150		
Piperonyl butoxide	1.82	ppm	1.99	< LOQ	91.7	34-143		
Prallethrin	1.71	ppm	1.99	< LOQ	86.2	33-150		
Propiconazole	1.92	ppm	1.99	< LOQ	96.4	46-138		
Propoxur	2.09	ppm	1.99	< LOQ	105	50-138		
Pyrethrins (total)	1.20	ppm		< LOQ		21-150		
Pyridaben	1.55	ppm	1.99	< LOQ	77.8	39-150		



Brian Weigel  
Lab Director

These results relate only to the sample included on this report. The report may not be reproduced except in full, without the written permission of SC Laboratories. Samples tested in accordance with Oregon Administrative Rules, TNI 2009 Standard and SC Laboratories quality assurance plan unless otherwise noted.

## Quality Control

### Pesticide Analysis (Continued)

**Batch: B190702 - Pesticide Prep (Continued)**

Matrix Spike(B190702-MS1)			Extracted - 04/25/19 12:42 Analyzed - 04/25/19 19:52					
Analyte	Result	Units	Spike Level	Source Result	%REC	%REC Limits	RPD	RPD Limit
Spinosad	1.73	ppm	1.63	< LOQ	106	31-150		
Spiromesifen	2.04	ppm	1.99	< LOQ	102	27-141		
Spirotetramat	1.78	ppm	1.99	< LOQ	89.3	31-141		
Spiroxamine	1.08	ppm	1.09	< LOQ	99.1	57-139		
Tebuconazole	2.07	ppm	1.99	< LOQ	104	32-140		
Thiacloprid	1.99	ppm	1.99	< LOQ	100	45-150		
Thiamethoxam	2.08	ppm	1.99	< LOQ	104	40-141		
Trifloxystrobin	1.99	ppm	1.99	< LOQ	100	30-137		

Matrix Spike Dup(B190702-MSD1)			Extracted - 04/25/19 12:42 Analyzed - 04/25/19					
Analyte	Result	Units	Spike Level	Source Result	%REC	%REC Limits	RPD	RPD Limit
Abamectin	1.64	ppm	1.89	< LOQ	86.8	15-150	12.8	40
Acephate	1.73	ppm	1.93	< LOQ	89.7	45-130	8.71	26
Acequinocyl	1.24	ppm	1.93	< LOQ	64.1	31-146	18.2	50
Acetamiprid	1.93	ppm	1.93	< LOQ	100	39-150	0.244	21
Aldicarb	1.89	ppm	1.93	< LOQ	97.8	47-143	1.77	30
Azoxystrobin	1.45	ppm	1.93	< LOQ	75.1	21-150	9.75	21
Bifenazate	1.58	ppm	1.93	< LOQ	82.1	31-150	9.68	20
Bifenthrin	1.22	ppm	1.93	< LOQ	63.2	23-132	9.41	30
Boscalid	1.37	ppm	1.93	< LOQ	71.2	41-141	8.76	20
Carbaryl	1.82	ppm	1.93	< LOQ	94.6	60-125	6.63	20
Carbofuran	2.02	ppm	1.93	< LOQ	105	57-136	0.312	24
Chlorantraniliprole	4.03	ppm	1.93	< LOQ	209	32-145	13.1	20
Chlorfenapyr	1.76	ppm	1.93	< LOQ	91.1	29-150	2.57	50
Chlorpyrifos	1.51	ppm	1.93	< LOQ	78.5	29-146	9.66	24
Clofentezine	1.69	ppm	1.93	< LOQ	87.7	48-128	6.02	20
Cyfluthrin	1.76	ppm	1.93	< LOQ	91.5	16-150	1.24	50
Cypermethrin	1.60	ppm	1.93	< LOQ	83.0	22-150	3.04	30
Daminozide	2.10	ppm	1.93	< LOQ	109	34-150	8.14	30
DDVP (Dichlorvos)	1.74	ppm	1.93	< LOQ	90.5	55-133	0.753	30
Diazinon	1.83	ppm	1.93	< LOQ	95.1	54-126	6.94	20
Dimethoate	1.86	ppm	1.93	< LOQ	96.4	60-129	7.43	20
Ethoprophos	1.60	ppm	1.93	< LOQ	83.3	40-150	6.44	29
Etofenprox	1.43	ppm	1.93	< LOQ	74.4	25-135	11.1	24
Etoxazole	1.58	ppm	1.93	< LOQ	82.0	26-149	10.7	30



Brian Weigel  
Lab Director

These results relate only to the sample included on this report. The report may not be reproduced except in full, without the written permission of SC Laboratories. Samples tested in accordance with Oregon Administrative Rules, TNI 2009 Standard and SC Laboratories quality assurance plan unless otherwise noted.

## Quality Control Pesticide Analysis (Continued)

Batch: B190702 - Pesticide Prep (Continued)

Matrix Spike Dup(B190702-MSD1)			Extracted - 04/25/19 12:42 Analyzed - 04/25/19					
Analyte	Result	Units	Spike Level	Source Result	%REC	%REC Limits	RPD	RPD Limit
Fenoxycarb	1.79	ppm	1.93	< LOQ	92.9	37-145	7.56	23
Fenpyroximate	1.62	ppm	1.93	< LOQ	83.8	27-150	10.9	20
Fipronil	1.34	ppm	1.93	< LOQ	69.6	27-150	9.17	28
Flonicamid	1.63	ppm	1.93	< LOQ	84.7	46-139	9.58	29
Fludioxonil	0.47	ppm	1.93	< LOQ	24.4	31-150	17.8	30
Hexythiazox	1.57	ppm	1.93	< LOQ	81.3	32-150	10.1	28
Imazalil	1.80	ppm	1.93	< LOQ	93.4	44-142	7.06	25
Imidacloprid	1.94	ppm	1.93	< LOQ	101	23-150	0.920	30
Kresoxim-methyl	1.92	ppm	1.93	< LOQ	99.4	49-130	6.87	20
Malathion	1.72	ppm	1.93	< LOQ	89.3	25-150	9.52	21
Metalaxyl	1.81	ppm	1.93	< LOQ	93.9	49-141	5.83	20
Methiocarb	1.68	ppm	1.93	< LOQ	87.4	44-146	8.43	20
Methomyl	1.85	ppm	1.93	< LOQ	96.0	44-136	7.14	30
Methyl parathion	1.95	ppm	1.93	< LOQ	101	15-150	3.94	50
MGK-264	0.86	ppm	1.21	< LOQ	70.8	22-150	8.75	24
Myclobutanil	1.68	ppm	1.93	< LOQ	87.0	34-150	9.06	23
Naled	1.46	ppm	1.93	< LOQ	75.5	38-142	7.53	25
Oxamyl	1.87	ppm	1.93	< LOQ	97.3	40-132	6.31	30
Paclobutrazol	1.60	ppm	1.93	< LOQ	83.1	29-147	8.24	20
Permethrins (total)	1.29	ppm		< LOQ		27-104		30
Phosmet	1.72	ppm	1.93	< LOQ	89.5	35-150	4.19	20
Piperonyl butoxide	1.56	ppm	1.93	< LOQ	81.1	34-143	12.3	21
Prallethrin	1.58	ppm	1.93	< LOQ	82.1	33-150	4.88	25
Propiconazole	1.69	ppm	1.93	< LOQ	87.5	46-138	9.63	20
Propoxur	2.03	ppm	1.93	< LOQ	105	50-138	0.256	28
Pyrethrins (total)	1.08	ppm		< LOQ		21-150		28
Pyridaben	1.37	ppm	1.93	< LOQ	71.2	39-150	8.90	23
Spinosad	1.58	ppm	1.58	< LOQ	100	31-150	5.95	30
Spiromesifen	1.84	ppm	1.93	< LOQ	95.5	27-141	7.06	30
Spirotetramat	1.60	ppm	1.93	< LOQ	82.8	31-141	7.60	25
Spiroxamine	0.97	ppm	1.06	< LOQ	91.2	57-139	8.28	20
Tebuconazole	1.88	ppm	1.93	< LOQ	97.6	32-140	6.54	20
Thiacloprid	1.92	ppm	1.93	< LOQ	99.7	45-150	0.717	21
Thiamethoxam	1.87	ppm	1.93	< LOQ	97.1	40-141	7.28	30
Trifloxystrobin	1.76	ppm	1.93	< LOQ	91.4	30-137	9.02	29



Brian Weigel  
 Lab Director

These results relate only to the sample included on this report. The report may not be reproduced except in full, without the written permission of SC Laboratories. Samples tested in accordance with Oregon Administrative Rules, TNI 2009 Standard and SC Laboratories quality assurance plan unless otherwise noted.

## Quality Control Terpene Analysis

**Batch: B190701 - Potency/Terpenes**

Blank(B190701-BLK1)			Extracted - 04/25/19 11:00 Analyzed - 04/25/19 15:48					
Analyte	Result	Units	Spike Level	Source Result	%REC	%REC Limits	RPD	RPD Limit
alpha Pinene	< LOQ	%						
Myrcene	< LOQ	%						
alpha Phellandrene	< LOQ	%						
3-Carene	< LOQ	%						
alpha Terpinene	< LOQ	%						
Limonene	< LOQ	%						
Terpinolene	< LOQ	%						
Linalool	< LOQ	%						
Fenchol	< LOQ	%						
Borneol	< LOQ	%						
Terpineol	< LOQ	%						
Geraniol	< LOQ	%						
alpha Humulene	< LOQ	%						
beta Caryophyllene	< LOQ	%						
Caryophyllene Oxide	< LOQ	%						
alpha Bisabolol	< LOQ	%						
Camphene	< LOQ	%						
beta Pinene	< LOQ	%						
Ocimene	< LOQ	%						
Sabinene	< LOQ	%						
Camphor	< LOQ	%						
Isoborneol	< LOQ	%						
Menthol	< LOQ	%						
alpha Cedrene	< LOQ	%						
Nerolidol	< LOQ	%						
R-(+)-Pulegone	< LOQ	%						
Eucalyptol	< LOQ	%						
p-Cymene	< LOQ	%						
(-)-Isopulegol	< LOQ	%						
Geranyl Acetate	< LOQ	%						
Guaiol	< LOQ	%						
Valencene	< LOQ	%						
Phytol	0.081	%						
Citronellol	< LOQ	%						
gamma-Terpinene	< LOQ	%						



Brian Weigel  
Lab Director

These results relate only to the sample included on this report. The report may not be reproduced except in full, without the written permission of SC Laboratories. Samples tested in accordance with Oregon Administrative Rules, TNI 2009 Standard and SC Laboratories quality assurance plan unless otherwise noted.

## Quality Control

### Terpene Analysis (Continued)

**Batch: B190701 - Potency/Terpenes (Continued)**

Duplicate(B190701-DUP1)		Extracted - 04/25/19 11:00 Analyzed - 04/25/19 15:48						
Analyte	Result	Units	Spike Level	Source Result	%REC	%REC Limits	RPD	RPD Limit
alpha Ocimene	< LOQ	%		< LOQ				20
alpha Terpineol	< LOQ	%		< LOQ				20
beta Ocimene	< LOQ	%		< LOQ				20
beta Terpineol	< LOQ	%		< LOQ				20
cis-Nerolidol	< LOQ	%		< LOQ				20
Phytol 1	< LOQ	%		< LOQ				20
Phytol 2	< LOQ	%		0.059				20
trans-Nerolidol	0.029	%		0.028			2.08	20
alpha Pinene	0.500	%		0.543			8.37	20
Myrcene	0.549	%		0.581			5.65	20
alpha Phellandrene	< LOQ	%		< LOQ				20
3-Carene	< LOQ	%		< LOQ				20
alpha Terpinene	< LOQ	%		< LOQ				20
Limonene	0.057	%		0.058			3.02	20
Terpinolene	< LOQ	%		< LOQ				20
Linalool	0.053	%		0.053			0.831	20
Fenchol	< LOQ	%		< LOQ				20
Borneol	< LOQ	%		< LOQ				20
Terpineol	< LOQ	%		< LOQ				20
Geraniol	< LOQ	%		< LOQ				20
alpha Humulene	0.083	%		0.082			1.85	20
beta Caryophyllene	0.216	%		0.213			1.41	20
Caryophyllene Oxide	< LOQ	%		< LOQ				20
alpha Bisabolol	0.043	%		0.042			3.76	20
Camphene	< LOQ	%		< LOQ				20
beta Pinene	0.220	%		0.235			6.69	20
Ocimene	< LOQ	%		< LOQ				20
Sabinene	< LOQ	%		< LOQ				20
Camphor	< LOQ	%		< LOQ				20
Isoborneol	< LOQ	%		< LOQ				20
Menthol	< LOQ	%		< LOQ				20
alpha Cedrene	< LOQ	%		< LOQ				20
Nerolidol	0.029	%		0.028			2.08	20
R-(+)-Pulegone	< LOQ	%		< LOQ				20
Eucalyptol	< LOQ	%		< LOQ				20



Brian Weigel  
Lab Director

These results relate only to the sample included on this report. The report may not be reproduced except in full, without the written permission of SC Laboratories. Samples tested in accordance with Oregon Administrative Rules, TNI 2009 Standard and SC Laboratories quality assurance plan unless otherwise noted.

## Quality Control Terpene Analysis (Continued)

**Batch: B190701 - Potency/Terpenes (Continued)**

Duplicate(B190701-DUP1)			Extracted - 04/25/19 11:00 Analyzed - 04/25/19 15:48					
Analyte	Result	Units	Spike Level	Source Result	%REC	%REC Limits	RPD	RPD Limit
p-Cymene	< LOQ	%		< LOQ				20
(-)-Isopulegol	< LOQ	%		< LOQ				20
Geranyl Acetate	< LOQ	%		< LOQ				20
Guaiol	0.045	%		0.052			13.2	20
Valencene	0.037	%		0.031			17.4	20
Phytol	< LOQ	%		0.059				20
Citronellol	< LOQ	%		< LOQ				20
gamma-Terpinene	< LOQ	%		< LOQ				20

**Batch: B190703 - Gravimetric**

Duplicate(B190703-DUP1)			Extracted - 04/26/19 9:45 Analyzed - 04/26/19 9:45					
Analyte	Result	Units	Spike Level	Source Result	%REC	%REC Limits	RPD	RPD Limit
Percent Moisture	9.29	%		9.35			0.665	20

**Batch: B190704 - Water Activity**

Duplicate(B190704-DUP1)			Extracted - 04/26/19 10:36 Analyzed - 04/26/19 10:36					
Analyte	Result	Units	Spike Level	Source Result	%REC	%REC Limits	RPD	RPD Limit
Water Activity	0.444	AW		0.440			0.769	20



Brian Weigel  
 Lab Director

These results relate only to the sample included on this report. The report may not be reproduced except in full, without the written permission of SC Laboratories. Samples tested in accordance with Oregon Administrative Rules, TNI 2009 Standard and SC Laboratories quality assurance plan unless otherwise noted.





**OREGON LIQUOR CONTROL COMMISSION  
CANNABIS TRANSPORTATION MANIFEST**



19D0123

All sales transactions are to be completed prior to transportation of any CANNABIS. The receiving entity may reject product delivered, but amount delivered must be limited to amount agreed upon in prior sales transaction.

<b>Manifest No.:</b>	<b>0001472924</b>	<b>Date Created:</b>	<b>4/24/2019 10:29 AM</b>
<b>Originating Entity:</b>	Western Oregon Botanicals	<b>For OLCC Use Only</b>	
<b>Originating License Number:</b>	020-10021071D94		
<b>Address of Originating Entity:</b>	18270 SW Belton Road Sherwood, OR 97140		
<b>Phone No. of Originating Entity:</b>	208-989-3449		
<b>Contact Phone No. for Inquiries: 5038992872</b>			
<b>Destination # 1</b>	<b>SC Laboratories</b>	<b>Destination Phone No.:</b>	<b>707-339-0050</b>
<b>Destination License Number:</b>	010-1004748743D	<b>Date and Approx. Time of Departure:</b>	4/24/2019 11:00 AM
<b>Address of Destination:</b>	15865 SW 74th Avenue Ste 110 Tigard, OR 97224	<b>Date and Approx. Time of Arrival:</b>	4/24/2019 3:00 PM
		<b>Date/Time Received:</b>	4/24/19 11:38
		<b>Notes: details for extenuating circumstances (e.g., road closure, flat tire, etc.)</b>	
<b>Route to be Traveled:</b> Google Maps			
<b>Name of Person Transporting:</b>	Scott Forster	<b>Handler Permit No. of Driver:</b>	N/A
<b>State Driver's License No.:</b>	a625521	<b>Signature of Person Transporting:</b>	<i>SAF</i>
<b>Make, Model, License Plate No.:</b>	Nissan NV200 825KAT		
<b>Package # 1</b>	<b>Production Batch No.</b>	<b>Item Name</b>	<b>Quantity</b>
1A40103000098BF000001624 Lab Test: SubmittedForTesting Status: Shipped		Mango (Buds (by strain))	Shp: 12.8800 g
<b>Harvests:</b>	3/22 Mango		
<b>Package # 2</b>	<b>Production Batch No.</b>	<b>Item Name</b>	<b>Quantity</b>
1A40103000098BF000001625 Lab Test: SubmittedForTesting Status: Shipped		Alien Jack (Buds (by strain))	Shp: 10.8200 g
<b>Harvests:</b>	3/22 Alien Jack		
<b>Package # 3</b>	<b>Production Batch No.</b>	<b>Item Name</b>	<b>Quantity</b>
1A40103000098BF000001626 Lab Test: SubmittedForTesting Status: Shipped		9lb Hammer (Buds (by strain))	Shp: 17.4800 g
<b>Harvests:</b>	3/21 9lb		
<b>PRODUCT REJECTION (if only a portion of shipment is rejected, circle that portion above)</b>			
<b>Name of Person Receiving or Rejecting Product:</b>	Breeanna Hamilton		
I confirm that the contents of this shipment match weight records entered above, and I agree to take custody of those portions of this shipment not circled above. Those portions circled were returned to the individual delivering this shipment.			
<b>Signature:</b>	<i>Breeanna Hamilton</i>	<b>Date:</b>	4/24/19
<b>Signature of individual taking receipt of rejected portion of this shipment:</b>			

Client: Western Oregon Botanicals Client License: 02010021071d94 Date Sampled: 4/24/2019 Thermometer ID: T014  
 Address Where Sampled: 18270 SW Benton Rd Sherwood OR Requestor: Abdullah Naimi Event ID: 19D0123 Balance ID: SAMP\_BAL\_02  
 Sampling SOP & Rev. #: SC-OR-SAMP-003 Sampler: Scott Forster Transporter: Scott Forster Hygrometer ID: Anemometer\_02  
 Lab ORELAP ID: 4133  
 Lab OLCC ID: 1004748743D

Sampler Signature



Weight used (g)	Weight Set ID	Acceptance Criteria	Initial Measured	Initial P/F	Final Measured	Final P/F
0.5	SAMP_CAL_02	±2.5%	0.5	P	0.5	P
200		±2.5%	199.98		199.98	

Container Type	METRC Harvest/Processing Lot ID #:				Product Type	Client Sample Name	Product Date	Batch Size (g)
storage tubs	1A4010300098BF000001619				Usable Marijuana	Mango	3/22/2019	2267.9
METRC Batch ID	Product Temp (°C)	Humidity (%)	# of Containers	Sampling Media	# Zones	# of Inc.	1° Sample Size (g)	Sample Name
	18.9	48.8	2	mylar bag	4	8	1.6	Mango Primary
Lab Sample ID	Container ID		Increment Zone	Sampling Media Wt. (g)	Wt. Inc+Media (g)	Increment Weight (g)	Sample METRC ID#	
19D0123-01	Mango-1		A1	0	1.6	1.6	1624	
19D0123-01	Mango-1		A1	1.6	3.2	1.6	1624	
19D0123-01	Mango-1		A2	3.2	4.8	1.6	1624	
19D0123-01	Mango-1		A3	4.8	6.4	1.6	1624	
19D0123-01	Mango-1		A4	6.4	8	1.6	1624	
19D0123-01	Mango-2		B1	8	9.6	1.6	1624	
19D0123-01	Mango-2		B2	9.6	11.2	1.6	1624	
19D0123-01	Mango-2		B4	11.2	12.88	1.68	1624	
Totals:		Minimum Sample Size = 11.3g (Usable Marijuana Only)			8	Total Sample Mass = 12.88		
Observations and Abnormalities:		Batch #	Equipment	Cont. Types/Sizes	Uniform	Plant Colors	Shape and Size	Sampling Plan ID & Rev. Date

Container Type	METRC Harvest/Processing Lot ID #:				Product Type	Client Sample Name	Product Date	Batch Size (g)
storage tubs	1A4010300098BF000001620				Usable Marijuana	Alien Jack	3/22/2019	1589
METRC Batch ID	Product Temp (°C)	Humidity (%)	# of Containers	Sampling Media	# Zones	# of Inc.	1° Sample Size (g)	Sample Name
	18.9	48.8	1	mylar bag	4	7	1.5	Alien Jack Primary
Lab Sample ID	Container ID		Increment Zone	Sampling Media Wt. (g)	Wt. Inc+Media (g)	Increment Weight (g)	Sample METRC ID#	
19D0123-02	Alien Jack-1		A1	0	1.5	1.5	1625	
19D0123-02	Alien Jack-1		A2	1.5	3	1.5	1625	
19D0123-02	Alien Jack-1		A2	3	4.5	1.5	1625	
19D0123-02	Alien Jack-1		A3	4.5	6	1.5	1625	
19D0123-02	Alien Jack-1		A3	6	7.5	1.5	1625	
19D0123-02	Alien Jack-1		A3	7.5	9	1.5	1625	
19D0123-02	Alien Jack-1		A3	9	10.82	1.82	1625	

<b>Totals:</b>	Minimum Sample Size = 9.1g (Usable Marijuana Only)			7	Total Sample Mass = 10.82		
<b>Observations and Abnormalities:</b>	<b>Batch #</b>	<b>Equipment</b>	<b>Cont. Types/Sizes</b>	<b>Uniform</b>	<b>Plant Colors</b>	<b>Shape and Size</b>	<b>Sampling Plan ID &amp; Rev. Date</b>

Container Type	METRC Harvest/Processing Lot ID #:				Product Type	Client Sample Name	Product Date	Batch Size (g)
storage tubs	1A4010300098BF000001621				Usable Marijuana	9 lb Hammer	3/21/2019	2948.3
METRC Batch ID	Product Temp (°C)	Humidity (%)	# of Containers	Sampling Media	# Zones	# of Inc.	1* Sample Size (g)	Sample Name
	18.9	48.8	2	mylar bag	4	8	2.1	9 lb Hammer Primary
Lab Sample ID	Container ID		Increment Zone	Sampling Media Wt. (g)	Wt. Inc+Media (g)	Increment Weight (g)	Sample METRC ID#	
19D0123-03	9 lb Hammer-1		A1	0	2.1	2.1	1626	
19D0123-03	9 lb Hammer-1		A1	2.1	4.2	2.1	1626	
19D0123-03	9 lb Hammer-1		A1	4.2	6.3	2.1	1626	
19D0123-03	9 lb Hammer-1		A3	6.3	8.4	2.1	1626	
19D0123-03	9 lb Hammer-1		A3	8.4	10.5	2.1	1626	
19D0123-03	9 lb Hammer-1		A4	10.5	12.6	2.1	1626	
19D0123-03	9 lb Hammer-2		B2	12.6	14.7	2.1	1626	
19D0123-03	9 lb Hammer-2		B4	14.7	17.48	2.78	1626	
<b>Totals:</b>	Minimum Sample Size = 15.9g (Usable Marijuana Only)			8	Total Sample Mass = 17.48			
<b>Observations and Abnormalities:</b>	<b>Batch #</b>	<b>Equipment</b>	<b>Cont. Types/Sizes</b>	<b>Uniform</b>	<b>Plant Colors</b>	<b>Shape and Size</b>	<b>Sampling Plan ID &amp; Rev. Date</b>	

# CHAIN OF CUSTODY

SC Laboratories Oregon LLC  
 15865 SW 74th Avenue, Ste 110  
 Tigard OR, 97224  
 (503) 272-8830  
 ORELAP ID # 4133  
[www.sc.labs.com](http://www.sc.labs.com)

Client: Western Oregon Botanicals  
 Address Where Sampled: 18270 SW Benton Rd, Sherwood OR  
 Date Sampled: 4/24/2019  
 OLCC License #: 020-10021071d94  
 OLCC License Type: Grower  
 Email: [adulla.nair@vahoo.co](mailto:adulla.nair@vahoo.co)  
 Phone: 208-989-3449  
 Sampler OLCC License #: 010-1004748743D

COC #: 1/1  
 Work Order #: 19D0123  
 Received By: BAH  
 Received Date: 4/24/19  
 Courier: Scott Forster  
 Name of Sampler: Scott Forster  
 Transfer Manifest #: 1472024  
 Place where Sampled: 18270 SW Benton Rd Sherwood OR

Sample Type Legend  
 U - Usable Marijuana  
 C - Concentrate  
 P - Product  
 O - Other

Sample Name	Time	METRC Label	Unique Batch Number	SC Labs LIMS ID	Sample Type	Total Sample Mass	TESTS REQUESTED						Sample Specific Notes	
							# of Increments	Polarity	Water Activity	Moisture Content	Pesticide	Residual Solvent		Terpene
Mango Primary	10:06	1624	Mango	19D0123-01	U	12.88	8	X	X	X	X	X	X	
Allen Jack Primary	10:15	1625	Allen Jack	19D0123-02	U	10.82	7	X	X	X	X	X	X	
9 lb Hammer Primary	10:24	1626	9 lb Hammer	19D0123-03	U	17.48	8	X	X	X	X	X	X	

Notes/Special Considerations: Opt OUT of Sample Duplicate Yes  No

Samples Relinquished Print Name: <u>Robert Wash</u> Date: <u>4/24/19</u> Representative of: <u>Western Oregon Botanicals</u> Signature: <u>[Signature]</u> Time: <u>10:45</u>	Samples Received Print Name: <u>Scott Forster</u> Date: <u>4/24/19</u> Representative of: <u>SC Labs</u> Signature: <u>[Signature]</u> Time: <u>10:45</u>
Samples Relinquished Print Name: _____ Date: _____ Representative of: _____ Signature: _____ Time: _____	Samples Received Print Name: _____ Date: _____ Representative of: _____ Signature: _____ Time: _____