

Sample Name: **Mango**  
 Tested for: **Western Oregon Botanicals**  
**Compliance - Usable**

Laboratory ID: 18G0012-01

Matrix: Useable Marijuana

Sample Metrc ID: 1A40103000098BF000001131

Strain: Mango

Lot # NA

Date Sampled: 07/06/18 10:04

Batch RFID: 1A40103000098BF000001123

Date Accepted: 07/06/18

Batch Size: 6810 (g)

Results Valid Until: 07/06/19



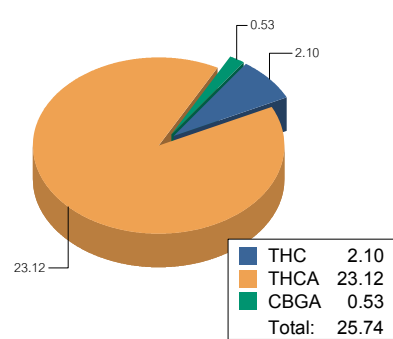
## Potency Analysis

Date Extracted: 07/09/18

Analysis Method/SOP: Potency

Date Analyzed: 07/09/18

\* - ORELAP certified analyte

Cannabinoids	% weight	mg/g	Cannabinoids Profile								
<b>Total THC</b> ((THCA*0.877)+d9)	22.37	223.7	 <table border="1"> <tr> <td>THC</td> <td>2.10</td> </tr> <tr> <td>THCA</td> <td>23.12</td> </tr> <tr> <td>CBGA</td> <td>0.53</td> </tr> <tr> <td><b>Total:</b></td> <td><b>25.74</b></td> </tr> </table>	THC	2.10	THCA	23.12	CBGA	0.53	<b>Total:</b>	<b>25.74</b>
THC	2.10										
THCA	23.12										
CBGA	0.53										
<b>Total:</b>	<b>25.74</b>										
<b>Total CBD</b> ((CBDA*0.877)+CBD)	< LOQ	< LOQ									
d9-THC (d9-Tetrahydrocannabinol)*	2.10	21									
d8-THC (d8-Tetrahydrocannabinol)*	< LOQ	< LOQ									
THCA (d9-Tetrahydrocannabinolic Acid)*	23.12	231.2									
CBD (Cannabidiol)*	< LOQ	< LOQ									
CBDA (Cannabidiolic Acid)*	< LOQ	< LOQ									
CBN (Cannabinol)*	< LOQ	< LOQ									
CBG (Cannabigerol)*	< LOQ	< LOQ									
CBGA (Cannabigerolic Acid)	0.53	5.3									
CBDV (Cannabidivarin)*	< LOQ	< LOQ									
CBDVA (Cannabidivarinic Acid)	< LOQ	< LOQ									
CBC (Cannabichromene)*	< LOQ	< LOQ									
THCV (Tetrahydrocannabivarin)	< LOQ	< LOQ									
<b>Total Cannabinoids</b>	25.86	258.6									

## Water Activity and Moisture

Analyte	Result	Limit	Units	LOQ	Analyzed	Method
Water Activity	0.516	0.65	AW	0.0300	07/10/2018	Water Activity
Percent Moisture	12.1	15	%	0.10	07/09/2018	Moisture

Cannabinoids reported as dry weight (moisture corrected)

Results above the action level are highlighted in red #.

<LOQ - Results below the Limit of Quantitation - Compound not detected



Brian Weigel  
 Lab Director

These results relate only to the sample included on this report. The report may not be reproduced except in full, without the written permission of SC Laboratories. Samples tested in accordance with Oregon Administrative Rules, TNI 2009 Standard and SC Laboratories quality assurance plan unless otherwise noted.

Sample Name: <b>Mango</b>	Date Sampled: <b>07/06/18 10:04</b>
Tested for: <b>Western Oregon Botanicals</b>	Date Accepted: <b>07/06/18</b>
<b>Compliance - Usable</b>	Results Valid Until: <b>07/06/19</b>
Laboratory ID: <b>Strain: Mango</b>	Sample Metrc ID: <b>1A40103000098BF000001131</b>
Matrix: <b>Useable Marijuana</b>	Batch RFID: <b>1A40103000098BF000001123</b>
Lot # <b>NA</b>	Batch Size: <b>6810 (g)</b>

**Terpene Analysis**

Date Extracted: 07/09/18 Analysis Method/SOP: Potency  
Date Analyzed: 07/09/18

Analyte	Result (%)	LOQ	Analyte	Result	LOQ
alpha Pinene	0.360	0.020	Myrcene	1.360	0.020
alpha Phellandrene	< LOQ	0.020	3-Carene	< LOQ	0.020
alpha Terpinene	< LOQ	0.020	Limonene	0.092	0.020
Terpinolene	< LOQ	0.020	Linalool	0.051	0.020
Fenchol	< LOQ	0.020	Borneol	< LOQ	0.020
Terpineol	< LOQ	0.020	Geraniol	< LOQ	0.020
alpha Humulene	0.053	0.020	beta Caryophyllene	0.155	0.020
Caryophyllene Oxide	< LOQ	0.020	alpha Bisabolol	0.029	0.020
Camphene	< LOQ	0.020	beta Pinene	0.168	0.020
Ocimene	< LOQ	0.020	Sabinene	0.020	0.020
Camphor	< LOQ	0.020	Isoborneol	< LOQ	0.020
Menthol	< LOQ	0.020	alpha Cedrene	< LOQ	0.020
Nerolidol	0.020	0.020	R-(+)-Pulegone	< LOQ	0.020
Eucalyptol	< LOQ	0.020	p-Cymene	< LOQ	0.020
(-)-Isopulegol	< LOQ	0.020	Geranyl Acetate	< LOQ	0.020
Guaiol	0.033	0.020	Valencene	0.077	0.020
Phytol	0.138	0.020	Citronellol	< LOQ	0.020
gamma-Terpinene	< LOQ	0.020			
<b>Total Terpenes</b>				<b>2.556 %</b>	

<LOQ - Results below the Limit of Quantitation - Compound not detected  
Terpene Analysis is not ORELAP Accredited.

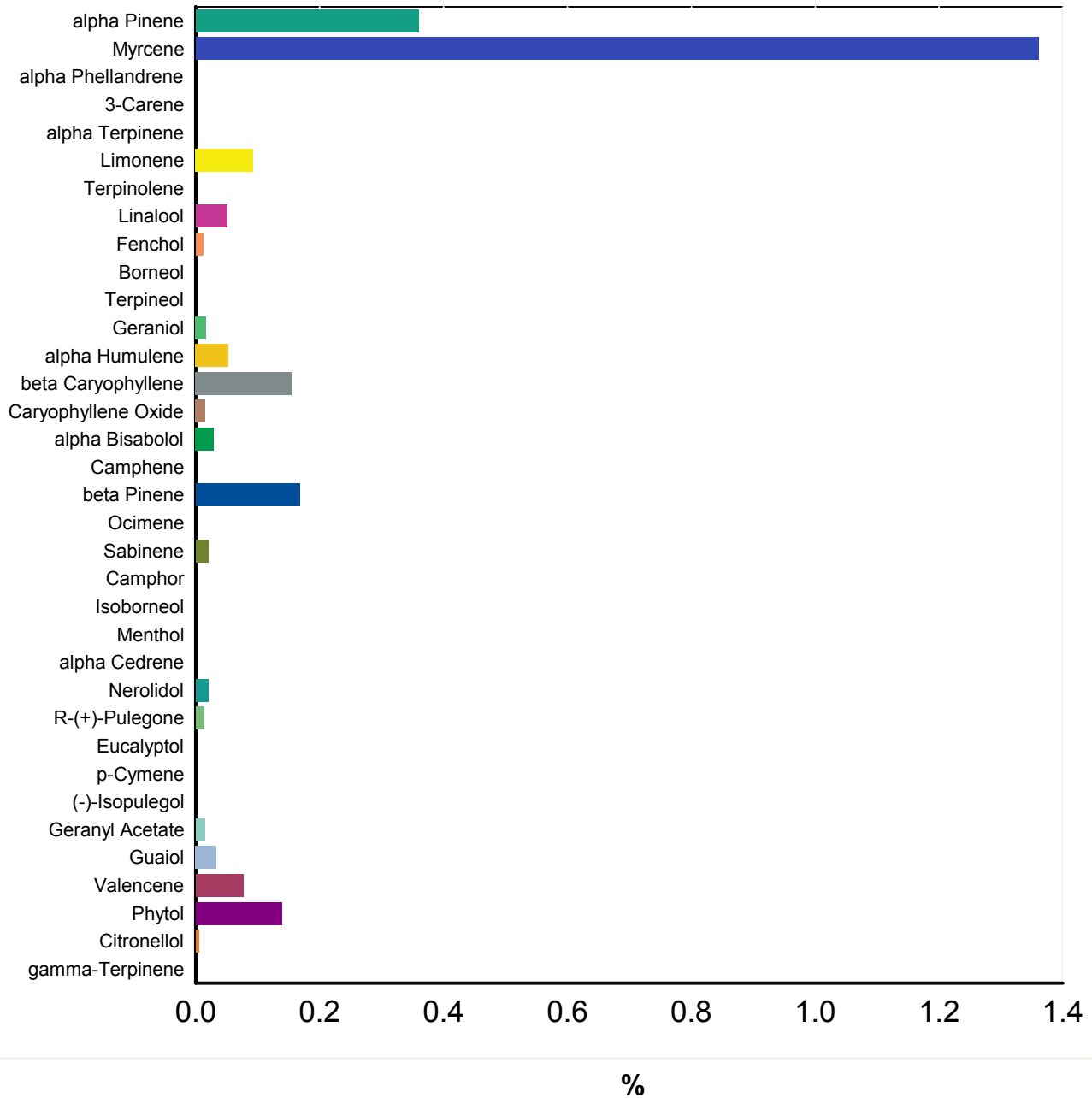


Brian Weigel  
Lab Director

These results relate only to the sample included on this report. The report may not be reproduced except in full, without the written permission of SC Laboratories. Samples tested in accordance with Oregon Administrative Rules, TNI 2009 Standard and SC Laboratories quality assurance plan unless otherwise noted.

Sample Name: <b>Mango</b>	Date Sampled: <b>07/06/18 10:04</b>
Tested for: <b>Western Oregon Botanicals</b>	Date Accepted: <b>07/06/18 16:27</b>
<b>Compliance - Usable</b>	Results Valid Until: <b>07/06/19</b>
Laboratory ID: <b>18G0012-01</b>	Matrix: <b>Useable Marijuana</b>
Client/Metric ID: <b>1A40103000098BF000001131</b>	

**Terpene Profile**



*Brian Weigel*  
Brian Weigel  
Lab Director

These results relate only to the sample included on this report. The report may not be reproduced except in full, without the written permission of SC Laboratories. Samples tested in accordance with Oregon Administrative Rules, TNI 2009 Standard and SC Laboratories quality assurance plan unless otherwise noted.

Sample Name: **Mango** Date Sampled: **07/06/18 10:04**  
 Tested for: **Western Oregon Botanicals** Date Accepted: **07/06/18**  
**Compliance - Usable** Results Valid Until: **07/06/19**

Laboratory ID: **18G0012-01** Strain: **Mango** Sample Metrc ID: **1A40103000098BF000001131**  
 Matrix: **Useable Marijuana** Batch RFID: **1A40103000098BF000001123**  
 Lot # **NA** Batch Size: **6810 (g)**

## Pesticide Analysis in ppm

Date Extracted: 07/10/18 Analysis Method/SOP: Pesticides  
 Date Analyzed: 07/10/18 Results above the action levels are highlighted in red #.

Analyte	Result	Action Level	LOQ	Analyte	Result	Action Level	LOQ
Abamectin	< LOQ	0.5	0.25	Acephate	< LOQ	0.4	0.20
Acequinocyl	< LOQ	2	1.00	Acetamiprid	< LOQ	0.2	0.10
Aldicarb	< LOQ	0.4	0.20	Azoxystrobin	< LOQ	0.2	0.10
Bifenazate	< LOQ	0.2	0.10	Bifenthrin	< LOQ	0.2	0.10
Boscalid	< LOQ	0.4	0.20	Carbaryl	< LOQ	0.2	0.10
Carbofuran	< LOQ	0.2	0.10	Chlorantraniliprole	< LOQ	0.2	0.10
Chlorfenapyr	< LOQ	1	0.50	Chlorpyrifos	< LOQ	0.2	0.10
Clofentezine	< LOQ	0.2	0.10	Cyfluthrin	< LOQ	1	0.50
Cypermethrin	< LOQ	1	0.50	Daminozide	< LOQ	1	0.50
DDVP (Dichlorvos)	< LOQ	1	0.50	Diazinon	< LOQ	0.2	0.10
Dimethoate	< LOQ	0.2	0.10	Ethoprophos	< LOQ	0.2	0.10
Etofenprox	< LOQ	0.4	0.20	Etoxazole	< LOQ	0.2	0.10
Fenoxycarb	< LOQ	0.2	0.10	Fenpyroximate	< LOQ	0.4	0.20
Fipronil	< LOQ	0.4	0.20	Fonicamid	< LOQ	1	0.50
Fludioxonil	< LOQ	0.4	0.20	Hexythiazox	< LOQ	1	0.50
Imazalil	< LOQ	0.2	0.10	Imidacloprid	< LOQ	0.4	0.20
Kresoxim-methyl	< LOQ	0.4	0.20	Malathion	< LOQ	0.2	0.10
Metalaxyl	< LOQ	0.2	0.10	Methiocarb	< LOQ	0.2	0.10
Methomyl	< LOQ	0.4	0.20	Methyl parathion	< LOQ	0.2	0.10
MGK-264	< LOQ	0.2	0.10	Myclobutanil	< LOQ	0.2	0.10
Naled	< LOQ	0.5	0.25	Oxamyl	< LOQ	1	0.50
Paclobutrazol	< LOQ	0.4	0.20	Permethrins (total)	< LOQ	0.2	0.10
Phosmet	< LOQ	0.2	0.10	Piperonyl butoxide	< LOQ	2	0.50
Prallethrin	< LOQ	0.2	0.10	Propiconazole	< LOQ	0.4	0.20
Propoxur	< LOQ	0.2	0.10	Pyrethrins (total)	< LOQ	1	0.50
Pyridaben	< LOQ	0.2	0.10	Spinosad	< LOQ	0.2	0.10
Spiromesifen	< LOQ	0.2	0.10	Spirotetramat	< LOQ	0.2	0.10
Spiroxamine	< LOQ	0.4	0.20	Tebuconazole	< LOQ	0.4	0.20
Thiacloprid	< LOQ	0.2	0.10	Thiamethoxam	< LOQ	0.2	0.10
Trifloxystrobin	< LOQ	0.2	0.10				

<LOQ - Results below the Limit of Quantitation - Compound not detected



Brian Weigel  
Lab Director

These results relate only to the sample included on this report. The report may not be reproduced except in full, without the written permission of SC Laboratories. Samples tested in accordance with Oregon Administrative Rules, TNI 2009 Standard and SC Laboratories quality assurance plan unless otherwise noted.

**Case Narrative**

Potency- CBC exceeded normally accepted QC criteria in the sample duplicate. Due to relatively large variations in very small values calculated high RPD.

Terpenes- Phytol, Nerolidol and Guaiol exceeded normally accepted QC criteria in the sample duplicate. Due to relatively large variations in very small values calculated high RPD.

**Quality Control  
Potency**

**Batch: B180528 - Potency/Terpenes**

Blank(B180528-BLK1)			Extracted - 07/09/18 11:52 Analyzed - 07/09/18 17:56					
Analyte	Result	Units	Spike Level	Source Result	%REC	%REC Limits	RPD	RPD Limit
d9-THC (d9-Tetrahydrocannabinol)	< LOQ	%						
d8-THC (d8-Tetrahydrocannabinol)	< LOQ	%						
THCA (d9-Tetrahydrocannabinolic Acid)	< LOQ	%						
CBD (Cannabidiol)	< LOQ	%						
CBDA (Cannabidiolic Acid)	< LOQ	%						
CBN (Cannabinol)	< LOQ	%						
CBG (Cannabigerol)	< LOQ	%						
CBGA (Cannabigerolic Acid)	< LOQ	%						
CBDV (Cannabidivarin)	< LOQ	%						
CBDVA (Cannabidivarinic Acid)	< LOQ	%						
CBC (Cannabichromene)	< LOQ	%						
THCV (Tetrahydrocannabivarin)	< LOQ	%						

Duplicate(B180528-DUP1)			Extracted - 07/09/18 11:52 Analyzed - 07/09/18 18:13					
Analyte	Result	Units	Spike Level	Source Result	%REC	%REC Limits	RPD	RPD Limit
d9-THC (d9-Tetrahydrocannabinol)	2.08	%		2.10			0.649	20
d8-THC (d8-Tetrahydrocannabinol)	< LOQ	%		< LOQ				20
THCA (d9-Tetrahydrocannabinolic Acid)	22.84	%		23.12			1.24	20
CBD (Cannabidiol)	< LOQ	%		< LOQ				20
CBDA (Cannabidiolic Acid)	0.05	%		0.05			4.47	20
CBN (Cannabinol)	< LOQ	%		< LOQ				20
CBG (Cannabigerol)	0.06	%		0.06			0.240	20
CBGA (Cannabigerolic Acid)	0.52	%		0.53			0.325	20
CBDV (Cannabidivarin)	< LOQ	%		< LOQ				20
CBDVA (Cannabidivarinic Acid)	< LOQ	%		< LOQ				20
CBC (Cannabichromene)	0.08	%		0.06			34.6	20
THCV (Tetrahydrocannabivarin)	< LOQ	%		< LOQ				20



Brian Weigel  
Lab Director

These results relate only to the sample included on this report. The report may not be reproduced except in full, without the written permission of SC Laboratories. Samples tested in accordance with Oregon Administrative Rules, TNI 2009 Standard and SC Laboratories quality assurance plan unless otherwise noted.

## Quality Control Potency (Continued)

**Batch: B180528 - Potency/Terpenes (Continued)**

LCS(B180528-BS1)		Extracted - 07/09/18 11:52 Analyzed - 07/09/18 18:04						
Analyte	Result	Units	Spike Level	Source Result	%REC	%REC Limits	RPD	RPD Limit
d9-THC (d9-Tetrahydrocannabinol)	0.04	%	0.0400		103	80-120		
CBD (Cannabidiol)	0.04	%	0.0400		92.8	80-120		
CBDA (Cannabidiolic Acid)	0.04	%	0.0400		91.3	80-120		
CBN (Cannabinol)	0.04	%	0.0400		88.0	80-120		



Brian Weigel  
Lab Director

These results relate only to the sample included on this report. The report may not be reproduced except in full, without the written permission of SC Laboratories. Samples tested in accordance with Oregon Administrative Rules, TNI 2009 Standard and SC Laboratories quality assurance plan unless otherwise noted.

## Quality Control Pesticide Analysis

**Batch: B180535 - Pesticide Prep**

Analyte	Result	Units	Spike Level	Source Result	%REC	%REC Limits	RPD	RPD Limit
<b>Blank(B180535-BLK1)</b>			<b>Extracted - 07/10/18 9:47 Analyzed - 07/10/18 21:11</b>					
Abamectin	< LOQ	ppm						
Acephate	< LOQ	ppm						
Acequinocyl	< LOQ	ppm						
Acetamiprid	< LOQ	ppm						
Aldicarb	< LOQ	ppm						
Azoxystrobin	< LOQ	ppm						
Bifenazate	< LOQ	ppm						
Bifenthrin	< LOQ	ppm						
Boscalid	< LOQ	ppm						
Carbaryl	< LOQ	ppm						
Carbofuran	< LOQ	ppm						
Chlorantraniliprole	< LOQ	ppm						
Chlorfenapyr	< LOQ	ppm						
Chlorpyrifos	< LOQ	ppm						
Clofentezine	< LOQ	ppm						
Cyfluthrin	< LOQ	ppm						
Cypermethrin	< LOQ	ppm						
Daminozide	< LOQ	ppm						
DDVP (Dichlorvos)	< LOQ	ppm						
Diazinon	< LOQ	ppm						
Dimethoate	< LOQ	ppm						
Ethoprophos	< LOQ	ppm						
Etofenprox	< LOQ	ppm						
Etoxazole	< LOQ	ppm						
Fenoxycarb	< LOQ	ppm						
Fenpyroximate	< LOQ	ppm						
Fipronil	< LOQ	ppm						
Fonicamid	< LOQ	ppm						
Fludioxonil	< LOQ	ppm						
Hexythiazox	< LOQ	ppm						
Imazalil	< LOQ	ppm						
Imidacloprid	< LOQ	ppm						
Kresoxim-methyl	< LOQ	ppm						
Malathion	< LOQ	ppm						
Metalaxyl	< LOQ	ppm						



Brian Weigel  
Lab Director

These results relate only to the sample included on this report. The report may not be reproduced except in full, without the written permission of SC Laboratories. Samples tested in accordance with Oregon Administrative Rules, TNI 2009 Standard and SC Laboratories quality assurance plan unless otherwise noted.

## Quality Control

### Pesticide Analysis (Continued)

**Batch: B180535 - Pesticide Prep (Continued)**

<b>Blank(B180535-BLK1)</b>			<b>Extracted - 07/10/18 9:47 Analyzed - 07/10/18 21:11</b>					
<b>Analyte</b>	<b>Result</b>	<b>Units</b>	<b>Spike Level</b>	<b>Source Result</b>	<b>%REC</b>	<b>%REC Limits</b>	<b>RPD</b>	<b>RPD Limit</b>
Methiocarb	< LOQ	ppm						
Methomyl	< LOQ	ppm						
Methyl parathion	< LOQ	ppm						
MGK-264	< LOQ	ppm						
Myclobutanil	< LOQ	ppm						
Naled	< LOQ	ppm						
Oxamyl	< LOQ	ppm						
Paclbutrazol	< LOQ	ppm						
Permethrins (total)	< LOQ	ppm						
Phosmet	< LOQ	ppm						
Piperonyl butoxide	< LOQ	ppm						
Prallethrin	< LOQ	ppm						
Propiconazole	< LOQ	ppm						
Propoxur	< LOQ	ppm						
Pyrethrins (total)	< LOQ	ppm						
Pyridaben	< LOQ	ppm						
Spinosad	< LOQ	ppm						
Spiromesifen	< LOQ	ppm						
Spirotetramat	< LOQ	ppm						
Spiroxamine	< LOQ	ppm						
Tebuconazole	< LOQ	ppm						
Thiacloprid	< LOQ	ppm						
Thiamethoxam	< LOQ	ppm						
Trifloxystrobin	< LOQ	ppm						

<b>LCS(B180535-BS1)</b>			<b>Extracted - 07/10/18 9:47 Analyzed - 07/10/18 21:27</b>					
<b>Analyte</b>	<b>Result</b>	<b>Units</b>	<b>Spike Level</b>	<b>Source Result</b>	<b>%REC</b>	<b>%REC Limits</b>	<b>RPD</b>	<b>RPD Limit</b>
Acephate	1.10	ppm	1.00		110	70-130		
Acetamiprid	1.16	ppm	1.00		116	70-130		
Aldicarb	1.13	ppm	1.00		113	70-130		
Bifenazate	1.07	ppm	1.00		107	70-130		
Boscalid	0.70	ppm	1.00		69.7	70-130		
Chlorantranilprole	0.97	ppm	1.00		96.6	70-130		
Chlorpyrifos	0.71	ppm	1.00		70.7	70-130		
Cyfluthrin	0.76	ppm	1.00		76.4	70-130		



Brian Weigel  
Lab Director

These results relate only to the sample included on this report. The report may not be reproduced except in full, without the written permission of SC Laboratories. Samples tested in accordance with Oregon Administrative Rules, TNI 2009 Standard and SC Laboratories quality assurance plan unless otherwise noted.



## Quality Control

### Pesticide Analysis (Continued)

**Batch: B180535 - Pesticide Prep (Continued)**

<b>LCS(B180535-BS1)</b>		<b>Extracted - 07/10/18 9:47 Analyzed - 07/10/18 21:27</b>						
<b>Analyte</b>	<b>Result</b>	<b>Units</b>	<b>Spike Level</b>	<b>Source Result</b>	<b>%REC</b>	<b>%REC Limits</b>	<b>RPD</b>	<b>RPD Limit</b>
DDVP (Dichlorvos)	1.08	ppm	1.00		108	70-130		
Ethoprophos	1.06	ppm	1.00		106	70-130		
Etoxazole	0.80	ppm	1.00		79.5	70-130		
Fenoxycarb	0.69	ppm	1.00		69.4	70-130		
Flonicamid	0.91	ppm	1.00		90.8	70-130		
Imazalil	1.04	ppm	1.00		104	70-130		
Imidacloprid	1.28	ppm	1.00		128	70-130		
Methiocarb	1.07	ppm	1.00		107	70-130		
Myclobutanil	0.92	ppm	1.00		91.5	70-130		
Oxamyl	1.10	ppm	1.00		110	70-130		
Paclobutrazol	0.68	ppm	1.00		67.9	70-130		
Piperonyl butoxide	0.94	ppm	1.00		94.2	70-130		
Prallethrin	1.04	ppm	1.00		104	70-130		
Propoxur	1.15	ppm	1.00		115	70-130		
Spiromesifen	1.30	ppm	1.00		130	70-130		
Spiroxamine	0.47	ppm	1.00		46.8	70-130		
Thiacloprid	1.30	ppm	1.00		130	70-130		
Thiamethoxam	1.13	ppm	1.00		113	70-130		
Trifloxystrobin	0.80	ppm	1.00		79.8	70-130		

<b>Matrix Spike(B180535-MS1)</b>		<b>Extracted - 07/10/18 9:47 Analyzed - 07/10/18 21:43</b>						
<b>Analyte</b>	<b>Result</b>	<b>Units</b>	<b>Spike Level</b>	<b>Source Result</b>	<b>%REC</b>	<b>%REC Limits</b>	<b>RPD</b>	<b>RPD Limit</b>
Acephate	1.72	ppm	1.93	< LOQ	89.0	70-130		
Acetamiprid	2.91	ppm	1.93	< LOQ	151	70-130		
Aldicarb	2.14	ppm	1.93	< LOQ	111	70-130		
Bifenazate	2.34	ppm	1.93	< LOQ	121	70-130		
Boscalid	1.88	ppm	1.93	< LOQ	97.2	70-130		
Chlorantraniliprole	1.79	ppm	1.93	< LOQ	92.5	70-130		
Chlorpyrifos	1.46	ppm	1.93	< LOQ	75.5	70-130		
Cyfluthrin	1.73	ppm	1.93	< LOQ	89.8	70-130		
DDVP (Dichlorvos)	1.88	ppm	1.93	< LOQ	97.6	70-130		
Ethoprophos	2.04	ppm	1.93	< LOQ	106	70-130		
Etoxazole	1.96	ppm	1.93	< LOQ	101	70-130		
Fenoxycarb	1.37	ppm	1.93	< LOQ	71.1	70-130		
Flonicamid	1.41	ppm	1.93	< LOQ	73.2	70-130		



Brian Weigel  
Lab Director

These results relate only to the sample included on this report. The report may not be reproduced except in full, without the written permission of SC Laboratories. Samples tested in accordance with Oregon Administrative Rules, TNI 2009 Standard and SC Laboratories quality assurance plan unless otherwise noted.

## Quality Control

### Pesticide Analysis (Continued)

**Batch: B180535 - Pesticide Prep (Continued)**

Matrix Spike(B180535-MS1)			Extracted - 07/10/18 9:47 Analyzed - 07/10/18 21:43					
Analyte	Result	Units	Spike Level	Source Result	%REC	%REC Limits	RPD	RPD Limit
Imazalil	1.92	ppm	1.93	< LOQ	99.4	70-130		
Imidacloprid	3.62	ppm	1.93	< LOQ	187	70-130		
Methiocarb	2.05	ppm	1.93	< LOQ	106	70-130		
Myclobutanil	1.95	ppm	1.93	< LOQ	101	70-130		
Oxamyl	1.76	ppm	1.93	< LOQ	91.0	70-130		
Paclbutrazol	1.37	ppm	1.93	< LOQ	71.0	70-130		
Piperonyl butoxide	1.88	ppm	1.93	< LOQ	97.6	70-130		
Prallethrin	2.07	ppm	1.93	< LOQ	107	70-130		
Propoxur	2.36	ppm	1.93	< LOQ	122	70-130		
Spiromesifen	2.04	ppm	1.93	< LOQ	106	70-130		
Spiroxamine	1.14	ppm	1.93	< LOQ	59.0	70-130		
Thiacloprid	2.34	ppm	1.93	< LOQ	121	70-130		
Thiamethoxam	1.77	ppm	1.93	< LOQ	91.4	70-130		
Trifloxystrobin	1.48	ppm	1.93	< LOQ	76.6	70-130		

Matrix Spike Dup(B180535-MSD1)			Extracted - 07/10/18 9:47 Analyzed - 07/10/18					
Analyte	Result	Units	Spike Level	Source Result	%REC	%REC Limits	RPD	RPD Limit
Acephate	1.72	ppm	1.93	< LOQ	89.1	70-130	0.129	30
Acetamiprid	2.77	ppm	1.93	< LOQ	144	70-130	4.80	30
Aldicarb	2.04	ppm	1.93	< LOQ	106	70-130	4.78	30
Bifenazate	2.32	ppm	1.93	< LOQ	120	70-130	0.366	30
Boscalid	1.78	ppm	1.93	< LOQ	92.4	70-130	4.99	30
Chlorantraniliprole	1.75	ppm	1.93	< LOQ	90.9	70-130	1.68	30
Chlorpyrifos	1.36	ppm	1.93	< LOQ	70.8	70-130	6.42	30
Cyfluthrin	1.51	ppm	1.93	< LOQ	78.3	70-130	13.7	30
DDVP (Dichlorvos)	1.82	ppm	1.93	< LOQ	94.2	70-130	3.49	30
Ethoprophos	2.03	ppm	1.93	< LOQ	105	70-130	0.543	30
Etoxazole	2.03	ppm	1.93	< LOQ	105	70-130	3.87	30
Fenoxycarb	1.29	ppm	1.93	< LOQ	67.1	70-130	5.83	30
Flonicamid	1.39	ppm	1.93	< LOQ	72.4	70-130	1.19	30
Imazalil	1.93	ppm	1.93	< LOQ	99.9	70-130	0.514	30
Imidacloprid	3.49	ppm	1.93	< LOQ	181	70-130	3.40	30
Methiocarb	2.06	ppm	1.93	< LOQ	107	70-130	0.548	30
Oxamyl	1.73	ppm	1.93	< LOQ	89.9	70-130	1.14	30
Paclbutrazol	1.27	ppm	1.93	< LOQ	65.9	70-130	7.51	30



 Brian Weigel  
 Lab Director

These results relate only to the sample included on this report. The report may not be reproduced except in full, without the written permission of SC Laboratories. Samples tested in accordance with Oregon Administrative Rules, TNI 2009 Standard and SC Laboratories quality assurance plan unless otherwise noted.

## Quality Control Pesticide Analysis (Continued)

**Batch: B180535 - Pesticide Prep (Continued)**

Matrix Spike Dup(B180535-MSD1)			Extracted - 07/10/18 9:47 Analyzed - 07/10/18					
Analyte	Result	Units	Spike Level	Source Result	%REC	%REC Limits	RPD	RPD Limit
Piperonyl butoxide	1.85	ppm	1.93	< LOQ	95.9	70-130	1.77	30
Prallethrin	2.05	ppm	1.93	< LOQ	107	70-130	0.655	30
Propoxur	2.31	ppm	1.93	< LOQ	120	70-130	1.87	30
Spiromesifen	2.12	ppm	1.93	< LOQ	110	70-130	3.82	30
Spiroxamine	1.07	ppm	1.93	< LOQ	55.3	70-130	6.44	30
Thiacloprid	2.19	ppm	1.93	< LOQ	114	70-130	6.34	30
Thiamethoxam	1.70	ppm	1.93	< LOQ	88.4	70-130	3.33	30
Trifloxystrobin	1.44	ppm	1.93	< LOQ	74.8	70-130	2.26	30



Brian Weigel  
Lab Director

These results relate only to the sample included on this report. The report may not be reproduced except in full, without the written permission of SC Laboratories. Samples tested in accordance with Oregon Administrative Rules, TNI 2009 Standard and SC Laboratories quality assurance plan unless otherwise noted.

## Quality Control Terpene Analysis

**Batch: B180529 - Potency/Terpenes**

Blank(B180529-BLK1)			Extracted - 07/09/18 11:54 Analyzed - 07/09/18 16:46					
Analyte	Result	Units	Spike Level	Source Result	%REC	%REC Limits	RPD	RPD Limit
alpha Pinene	< LOQ	%						
Myrcene	< LOQ	%						
alpha Phellandrene	< LOQ	%						
3-Carene	< LOQ	%						
alpha Terpinene	< LOQ	%						
Limonene	< LOQ	%						
Terpinolene	< LOQ	%						
Linalool	< LOQ	%						
Fenchol	< LOQ	%						
Borneol	< LOQ	%						
Terpineol	< LOQ	%						
Geraniol	< LOQ	%						
alpha Humulene	< LOQ	%						
beta Caryophyllene	< LOQ	%						
Caryophyllene Oxide	< LOQ	%						
alpha Bisabolol	< LOQ	%						
Camphene	< LOQ	%						
beta Pinene	< LOQ	%						
Ocimene	< LOQ	%						
Sabinene	< LOQ	%						
Camphor	< LOQ	%						
Isoborneol	< LOQ	%						
Menthol	< LOQ	%						
alpha Cedrene	< LOQ	%						
Nerolidol	< LOQ	%						
R-(+)-Pulegone	< LOQ	%						
Eucalyptol	< LOQ	%						
p-Cymene	< LOQ	%						
(-)-Isopulegol	< LOQ	%						
Geranyl Acetate	< LOQ	%						
Guaiol	< LOQ	%						
Valencene	< LOQ	%						
Phytol	0.097	%						
Citronellol	< LOQ	%						
gamma-Terpinene	< LOQ	%						



Brian Weigel  
Lab Director

These results relate only to the sample included on this report. The report may not be reproduced except in full, without the written permission of SC Laboratories. Samples tested in accordance with Oregon Administrative Rules, TNI 2009 Standard and SC Laboratories quality assurance plan unless otherwise noted.

## Quality Control

### Terpene Analysis (Continued)

**Batch: B180529 - Potency/Terpenes (Continued)**

Duplicate(B180529-DUP1)			Extracted - 07/09/18 11:54 Analyzed - 07/09/18 16:46					
Analyte	Result	Units	Spike Level	Source Result	%REC	%REC Limits	RPD	RPD Limit
alpha Ocimene	< LOQ	%		< LOQ				20
alpha Terpineol	< LOQ	%		< LOQ				20
beta Ocimene	< LOQ	%		< LOQ				20
beta Terpineol	< LOQ	%		< LOQ				20
cis-Nerolidol	< LOQ	%		< LOQ				20
Phytol 1	< LOQ	%		0.058				20
Phytol 2	0.054	%		0.081			40.1	20
trans-Nerolidol	0.025	%		< LOQ				20
alpha Pinene	0.349	%		0.360			3.00	20
Myrcene	1.291	%		1.360			5.20	20
alpha Phellandrene	< LOQ	%		< LOQ				20
3-Carene	< LOQ	%		< LOQ				20
alpha Terpinene	< LOQ	%		< LOQ				20
Limonene	0.090	%		0.092			2.89	20
Terpinolene	< LOQ	%		< LOQ				20
Linalool	0.049	%		0.051			3.18	20
Fenchol	< LOQ	%		< LOQ				20
Borneol	< LOQ	%		< LOQ				20
Terpineol	< LOQ	%		< LOQ				20
Geraniol	0.023	%		< LOQ				20
alpha Humulene	0.060	%		0.053			12.7	20
beta Caryophyllene	0.149	%		0.155			3.78	20
Caryophyllene Oxide	0.025	%		< LOQ				20
alpha Bisabolol	0.033	%		0.029			15.1	20
Camphene	< LOQ	%		< LOQ				20
beta Pinene	0.167	%		0.168			0.707	20
Ocimene	< LOQ	%		< LOQ				20
Sabinene	< LOQ	%		< LOQ				20
Camphor	< LOQ	%		< LOQ				20
Isoborneol	< LOQ	%		< LOQ				20
Menthol	< LOQ	%		< LOQ				20
alpha Cedrene	< LOQ	%		< LOQ				20
Nerolidol	0.025	%		< LOQ			21.1	20
R-(+)-Pulegone	< LOQ	%		< LOQ				20
Eucalyptol	< LOQ	%		< LOQ				20



Brian Weigel  
Lab Director

These results relate only to the sample included on this report. The report may not be reproduced except in full, without the written permission of SC Laboratories. Samples tested in accordance with Oregon Administrative Rules, TNI 2009 Standard and SC Laboratories quality assurance plan unless otherwise noted.

## Quality Control Terpene Analysis (Continued)

**Batch: B180529 - Potency/Terpenes (Continued)**

Duplicate(B180529-DUP1)			Extracted - 07/09/18 11:54 Analyzed - 07/09/18 16:46					
Analyte	Result	Units	Spike Level	Source Result	%REC	%REC Limits	RPD	RPD Limit
p-Cymene	< LOQ	%		< LOQ				20
(-)-Isopulegol	< LOQ	%		< LOQ				20
Geranyl Acetate	< LOQ	%		< LOQ				20
Guaiol	0.042	%		0.033			23.9	20
Valencene	0.082	%		0.077			7.14	20
Phytol	0.054	%		0.138			88.0	20
Citronellol	< LOQ	%		< LOQ				20
gamma-Terpinene	< LOQ	%		< LOQ				20

**Batch: B180530 - Gravimetric**

Duplicate(B180530-DUP1)			Extracted - 07/09/18 13:30 Analyzed - 07/09/18 13:30					
Analyte	Result	Units	Spike Level	Source Result	%REC	%REC Limits	RPD	RPD Limit
Percent Moisture	12.1	%		12.1			0.159	20

**Batch: B180538 - Water Activity**

Duplicate(B180538-DUP1)			Extracted - 07/10/18 17:43 Analyzed - 07/10/18 17:43					
Analyte	Result	Units	Spike Level	Source Result	%REC	%REC Limits	RPD	RPD Limit
Water Activity	0.571	AW		0.558			2.18	20



Brian Weigel  
 Lab Director

These results relate only to the sample included on this report. The report may not be reproduced except in full, without the written permission of SC Laboratories. Samples tested in accordance with Oregon Administrative Rules, TNI 2009 Standard and SC Laboratories quality assurance plan unless otherwise noted.



**OREGON LIQUOR CONTROL COMMISSION  
CANNABIS TRANSPORTATION MANIFEST**



18G0012

All sales transactions are to be completed prior to transportation of any CANNABIS. The receiving entity may reject product delivered, but amount delivered must be limited to amount agreed upon in prior sales transaction.

<b>Manifest #:</b>	<b>0000822086</b>	<b>Date Created:</b>	<b>7/6/2018 10:22 AM</b>
<b>Originating Entity:</b>	Western Oregon Botanicals	<b>For OLCC Use Only</b>	
<b>Originating License Number:</b>	020-10021071D94		
<b>Address of Originating Entity:</b>	18270 SW Belton Road Sherwood, OR 97140		
<b>Phone No. of Originating Entity:</b>	971-325-4690		
<b>Contact Phone No. for Inquiries:</b>		<b>707-331-0560</b>	
<b>Destination # 1:</b>	SC Laboratories	<b>Destination Phone No.:</b>	<b>707-339-0050</b>
<b>Destination License Number:</b>	010-1004748743D	<b>Date and Approximate Time of Departure:</b>	7/6/2018 10:19 AM
<b>Address of Destination:</b>	15865 SW 74th Avenue Ste 110 Tigard, OR 97224	<b>Date and Approximate Time of Arrival:</b>	7/6/2018 6:20 PM
		<b>Date/Time Received:</b>	7.6.18 4:27
		<b>Notes:</b> details for extenuating circumstances (e.g., road closure, flat tire, etc.)	
<b>Route to be Traveled:</b> shortest google route			
<b>Name of Person Transporting:</b>	Scott Forster	<b>Handler Permit No. of Driver:</b>	n/a
<b>State Driver's License No.:</b>	A625521	<b>Signature of Person Transporting:</b>	<i>[Signature]</i>
<b>Make, Model, License Plate No.:</b>	Nissan NV 200 825kat		
<b>Package Label</b>	<b>Harvest Name</b>	<b>Item Name</b>	<b>Weight/Quantity</b>
1A40103000098BF000001131 Status: Shipped	mango 5/25	Mango (Buds (by strain))	Shp: 35.1200 g
<b>PRODUCT REJECTION (if only a portion of shipment is rejected, circle that portion above)</b>			
<b>Name of Person Receiving or Rejecting Product:</b>	<i>Angelica Serr</i>		
I confirm that the contents of this shipment match weight records entered above, and I agree to take custody of those portions of this shipment <i>not</i> circled above. Those portions circled were returned to the individual delivering this shipment.			
<b>Signature:</b>	<i>[Signature]</i>	<b>Date:</b>	7.6.18
<b>Signature of individual taking receipt of rejected portion of this shipment:</b>			





